

# Installation manual

## Database Workbench 5 in ubuntu Linux 14.04 LTS Desktop

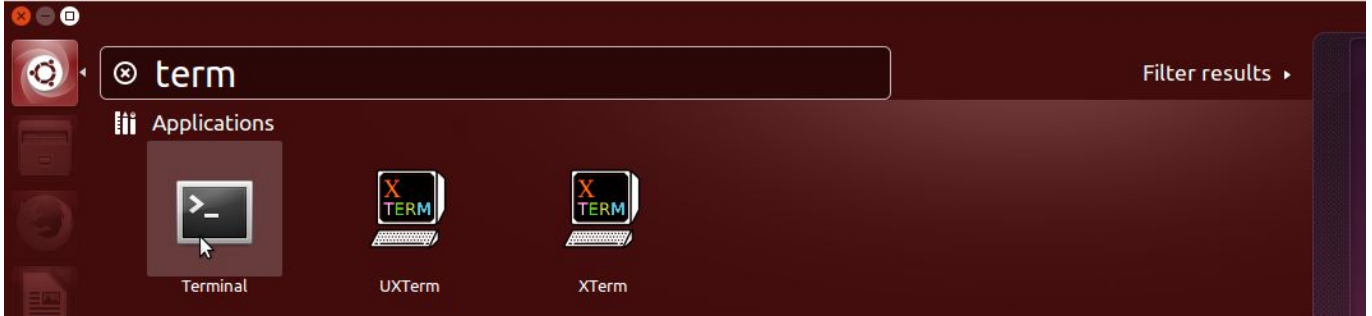
### 0. Requirements

- on the PC must be installed a version of 32- or 64bit ubuntu 14.04 LTS Desktop
- you need Internet access

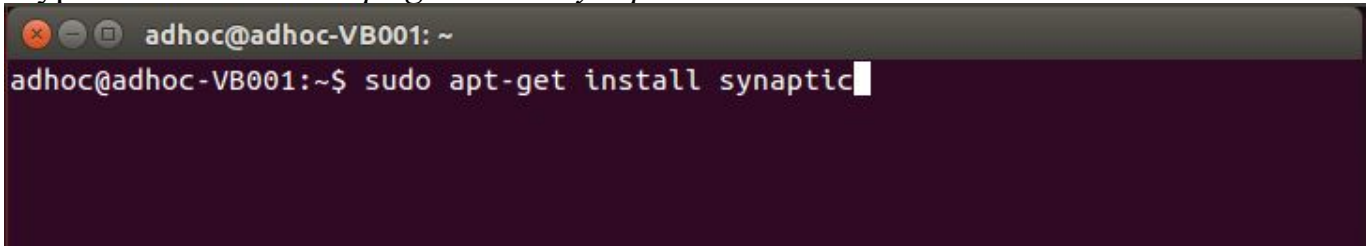
### 1. Preliminaries - installation of required software

#### a) Installation Synaptic (optional - for a more comfortable installation)

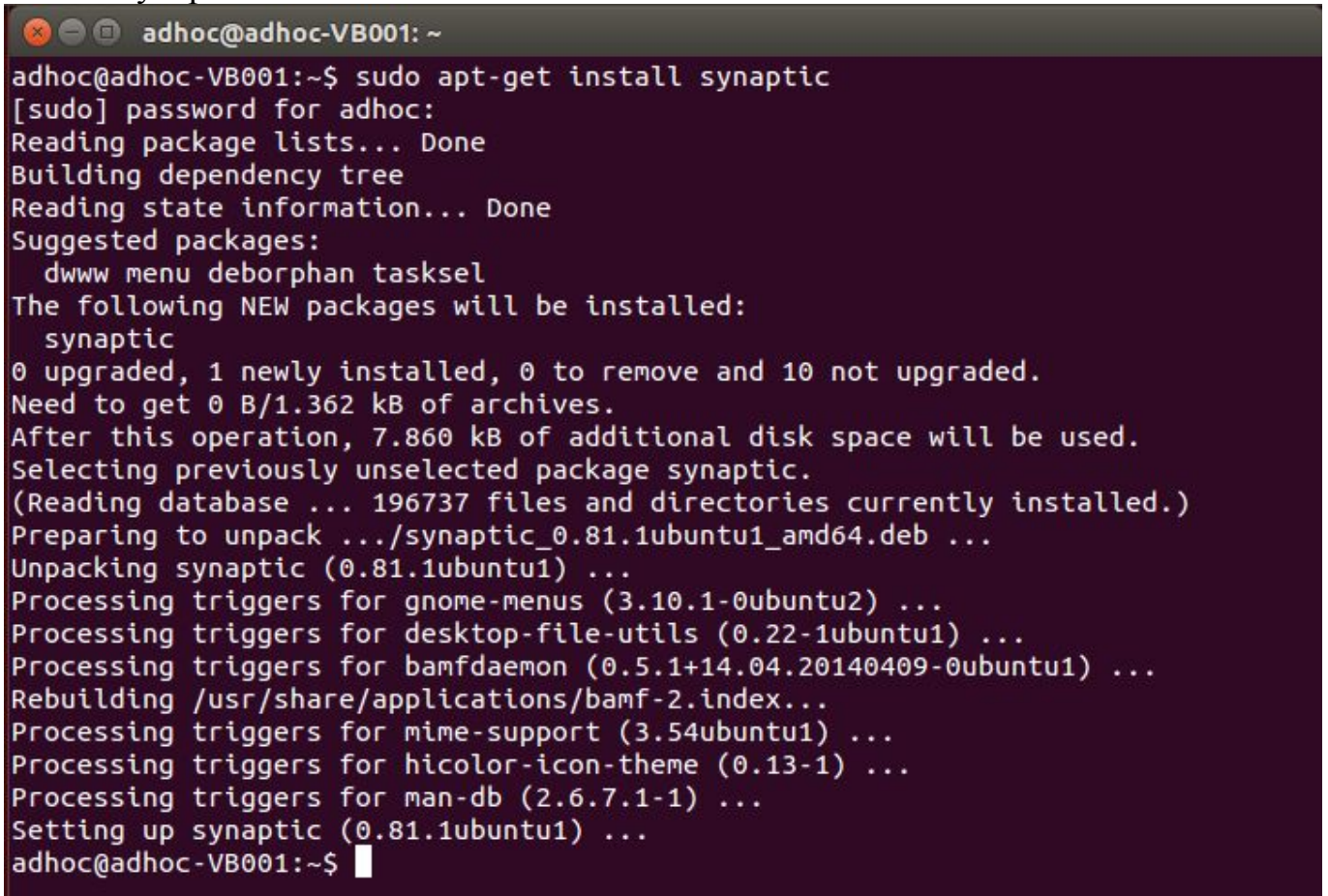
- open terminal



- type command: *sudo apt-get install synaptic*



- install synaptic

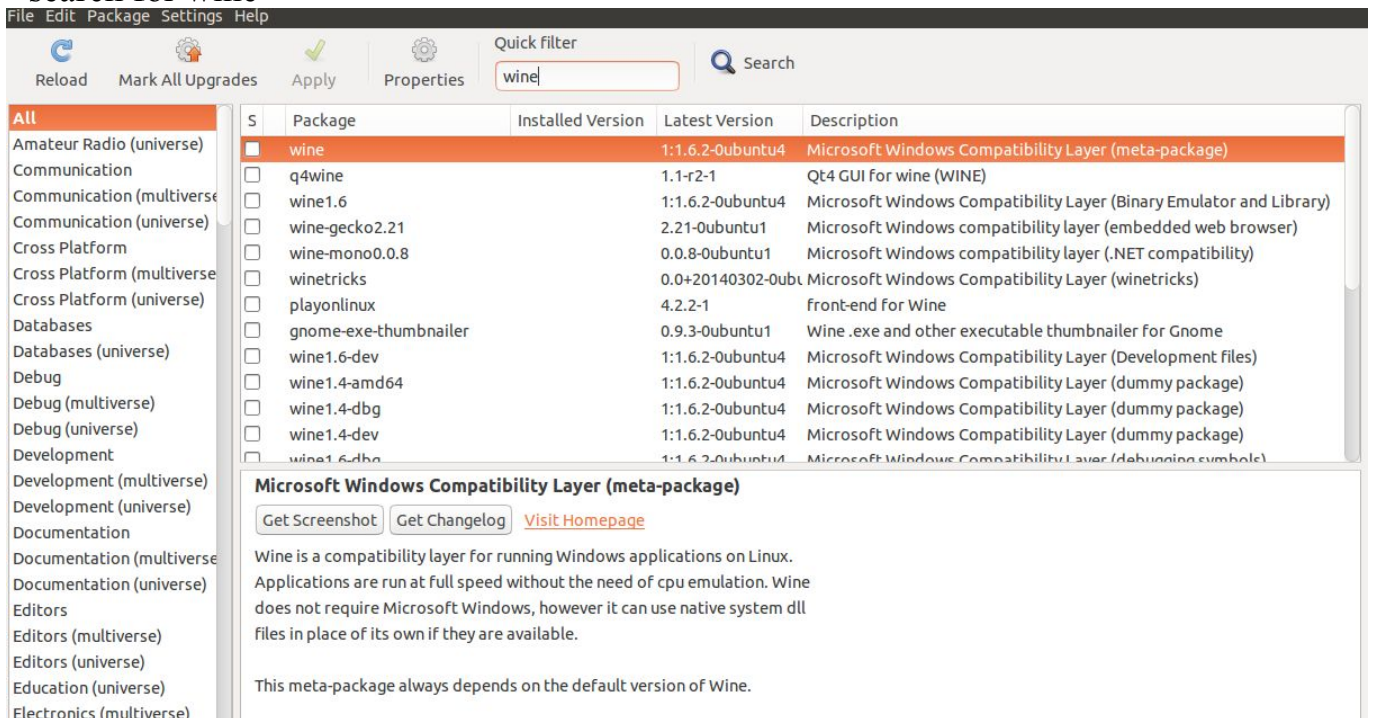


## b) Installation of wine

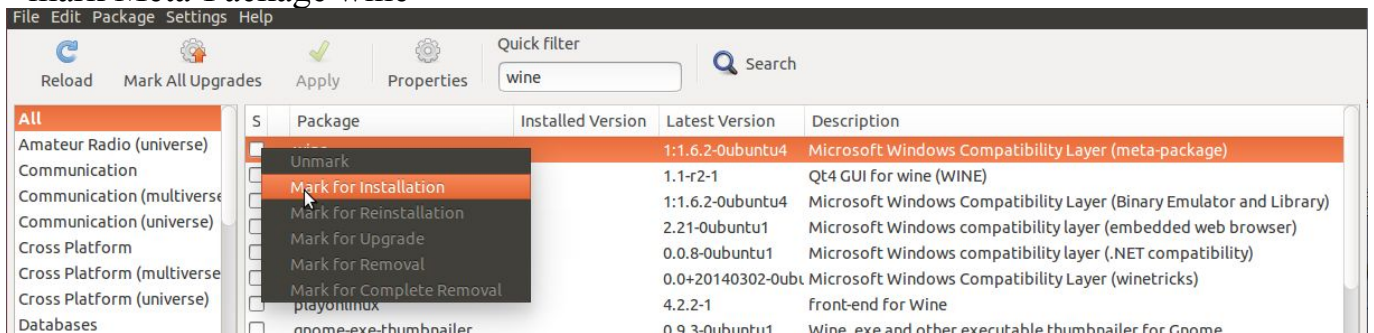
- open synaptic



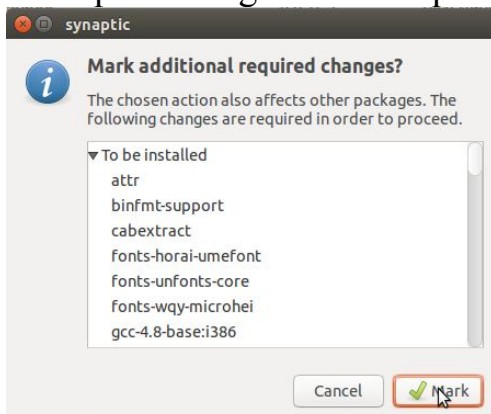
- search for wine



- mark Meta-Package wine

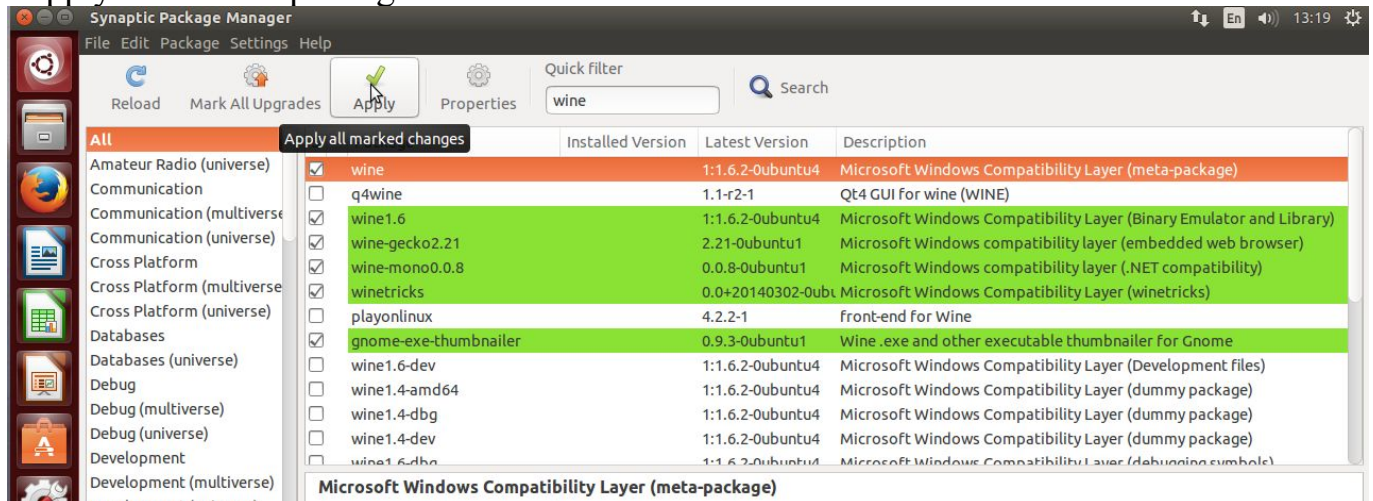


- accept marking of more required packages

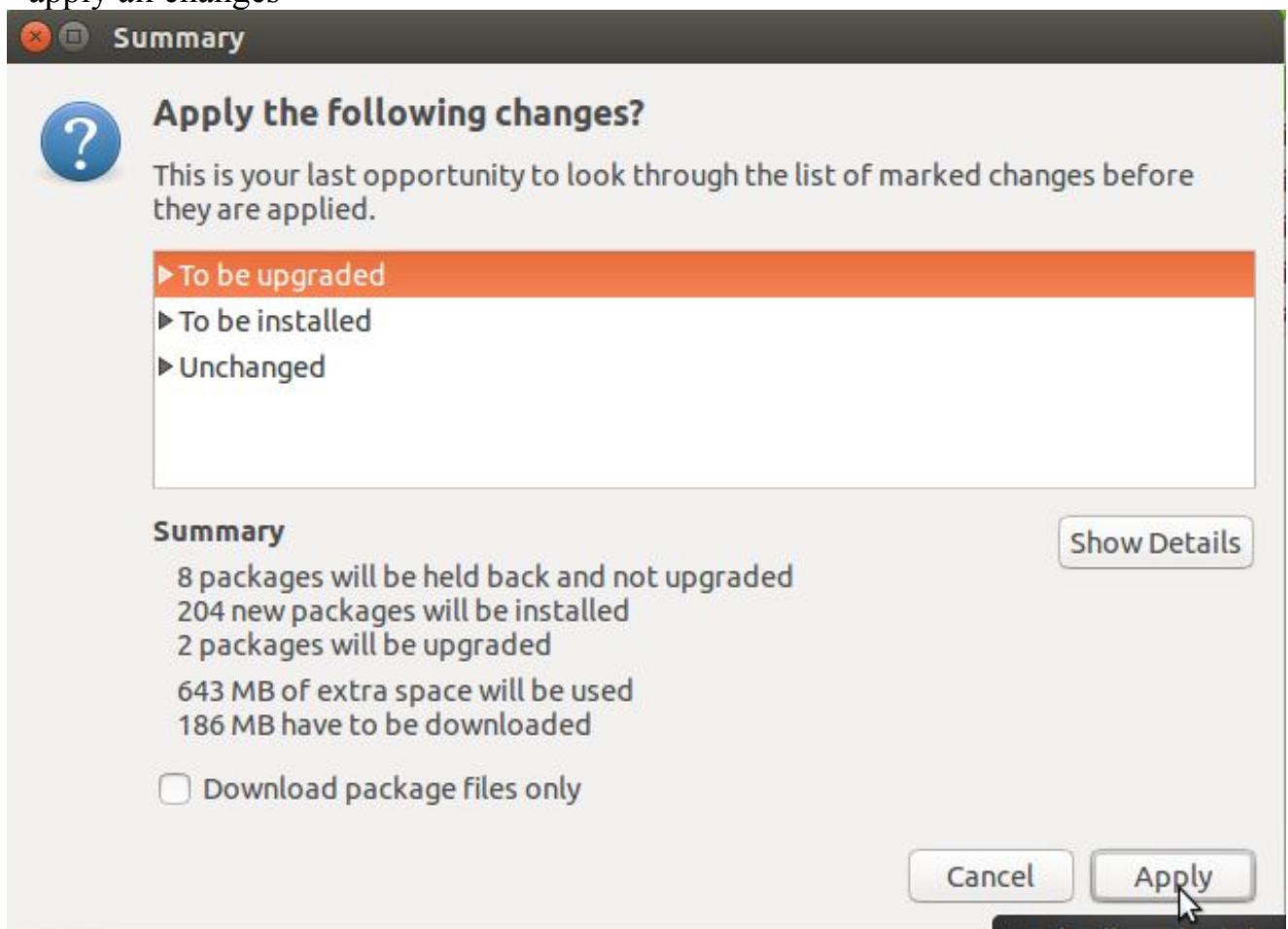




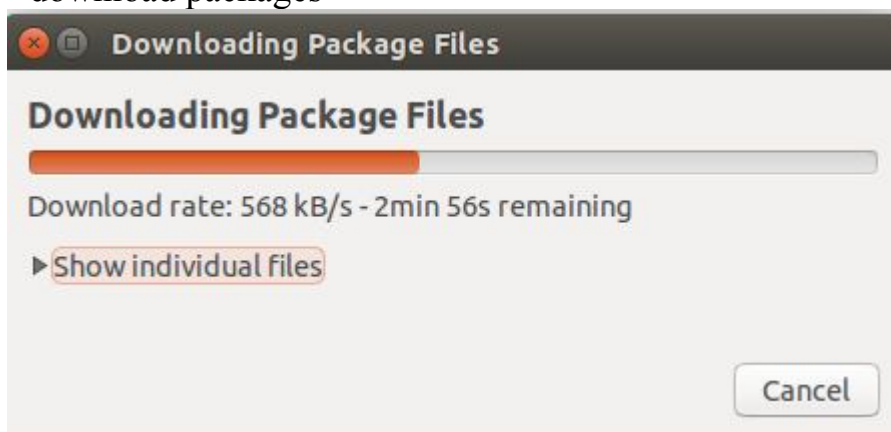
- apply all marked packages



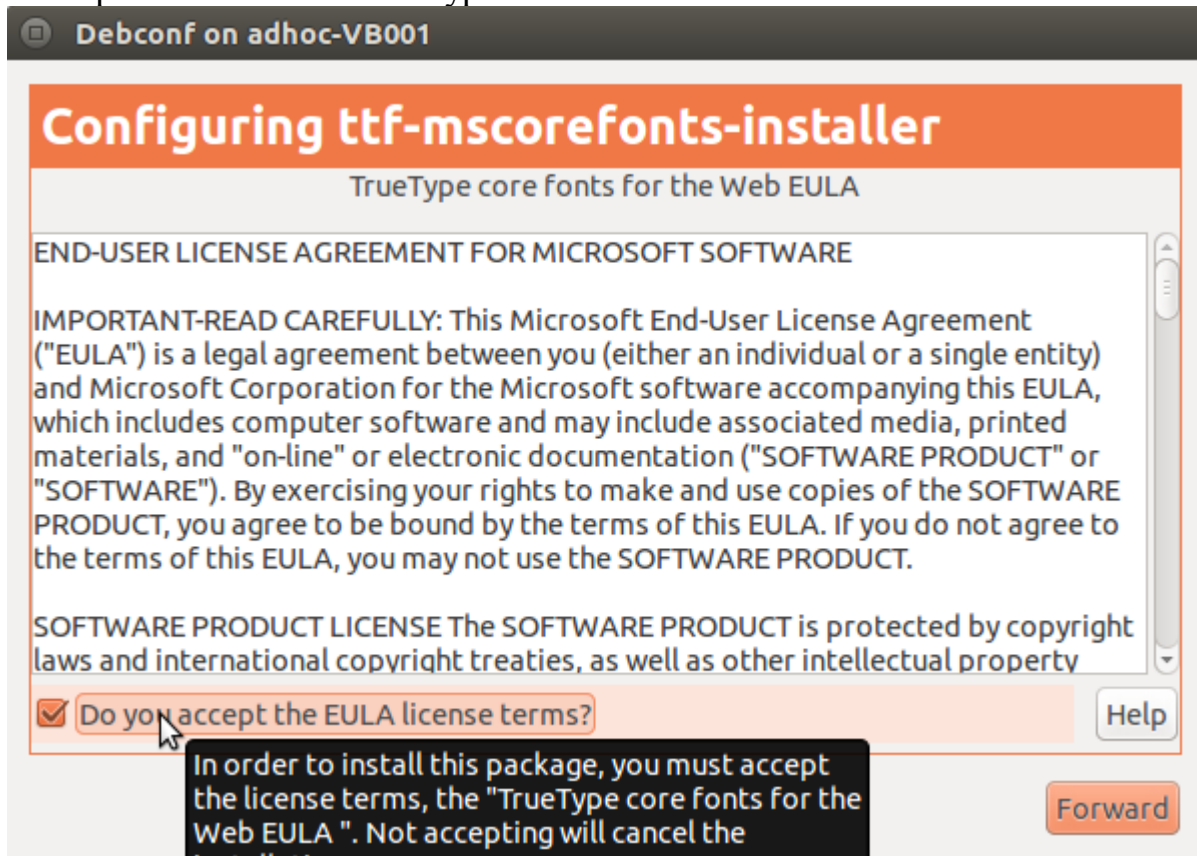
- apply all changes



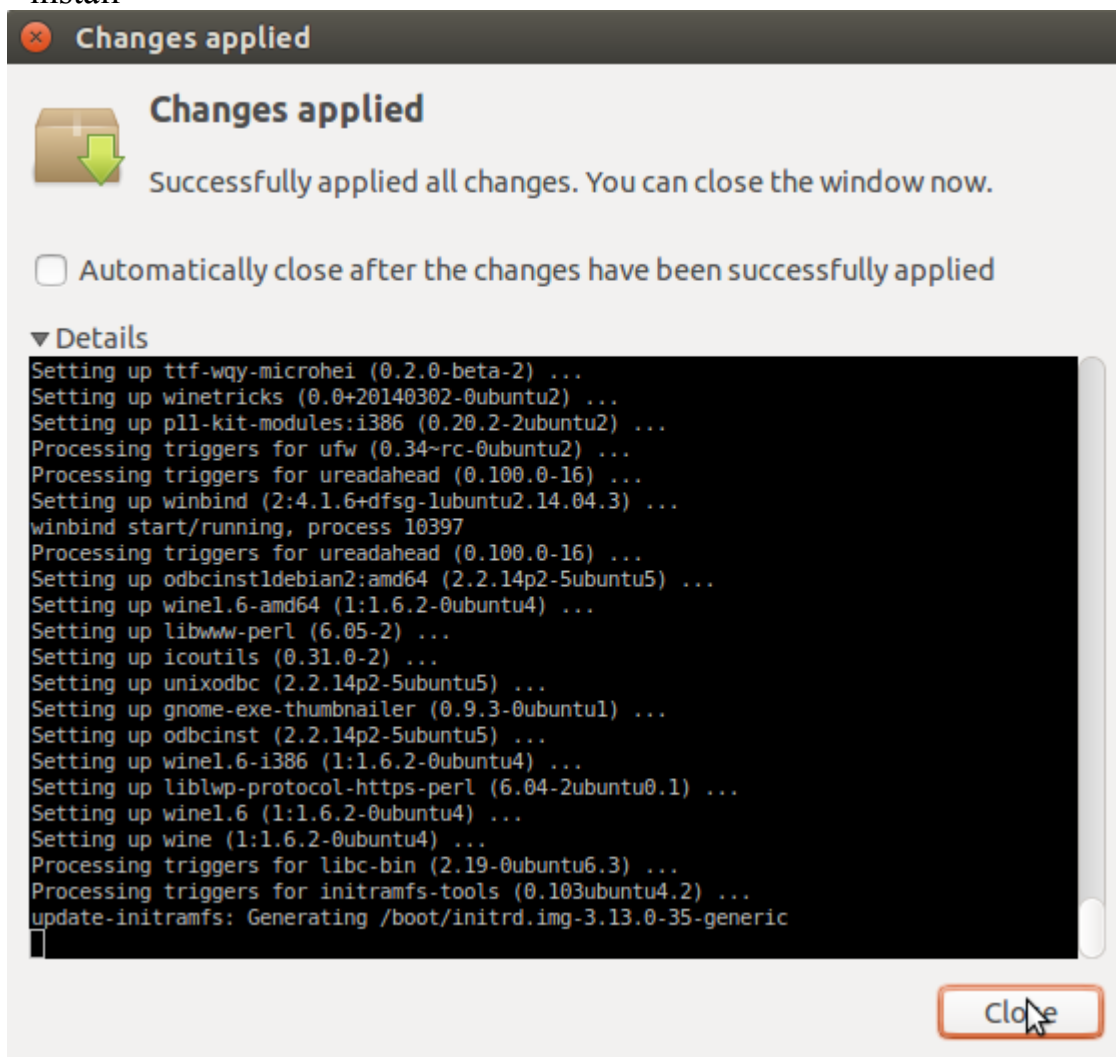
- download packages



- accept the license for TrueType MS-CoreFonts



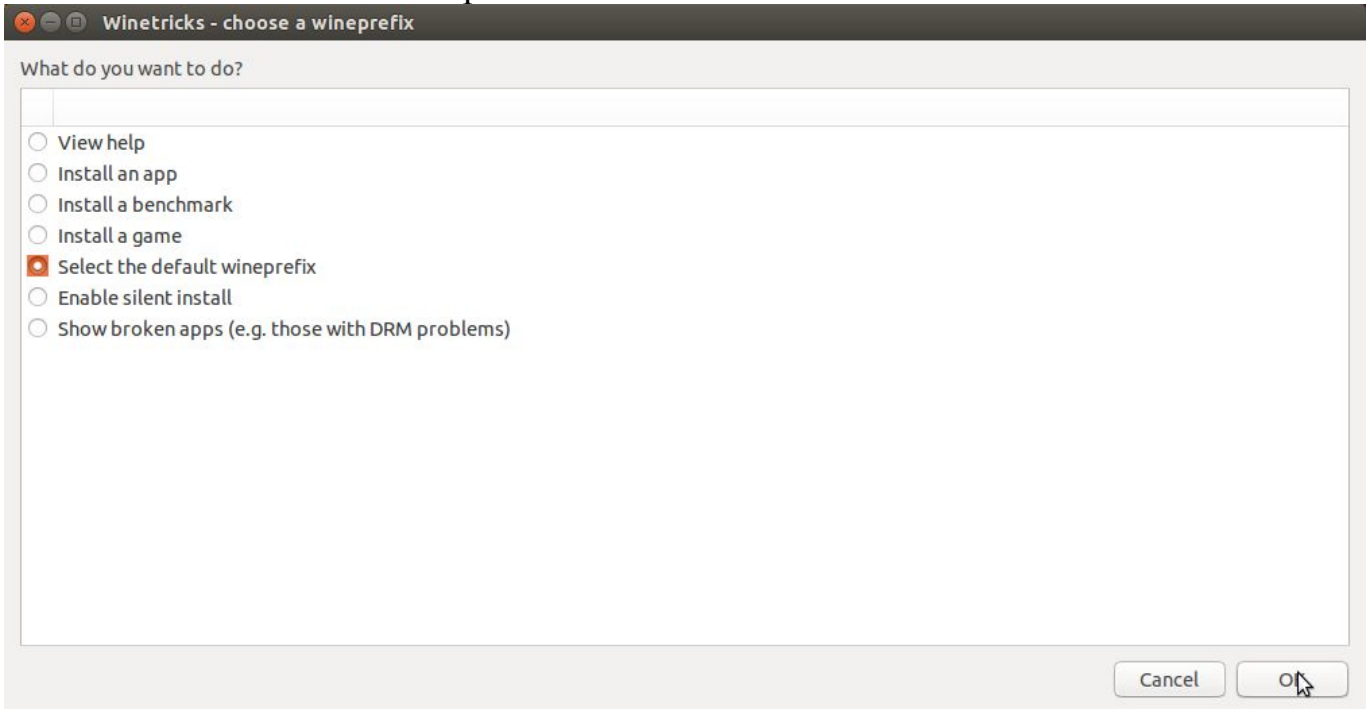
- install



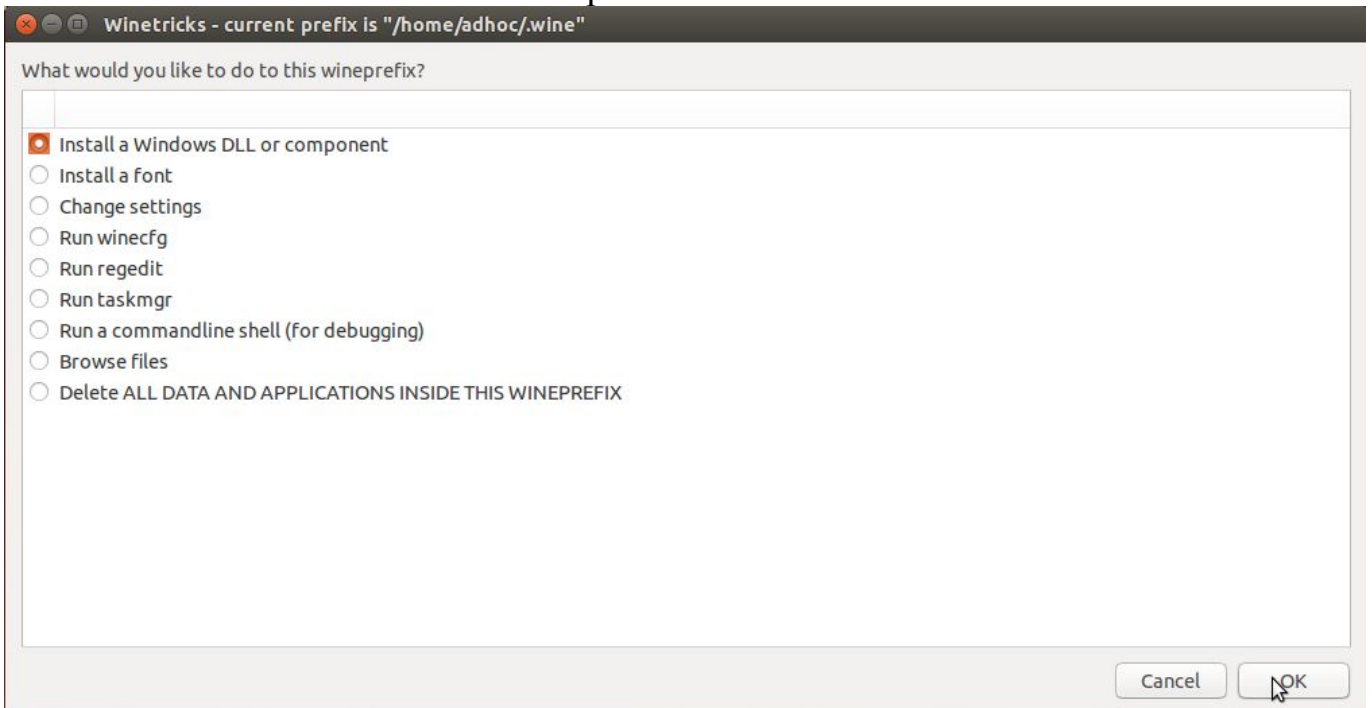
**c) Installation of gdiplus** (a Windows program-library for graphics and formatted text)  
For installation we use the shell-Scripts *winetricks* (was installed together with wine)  
- open script winetricks



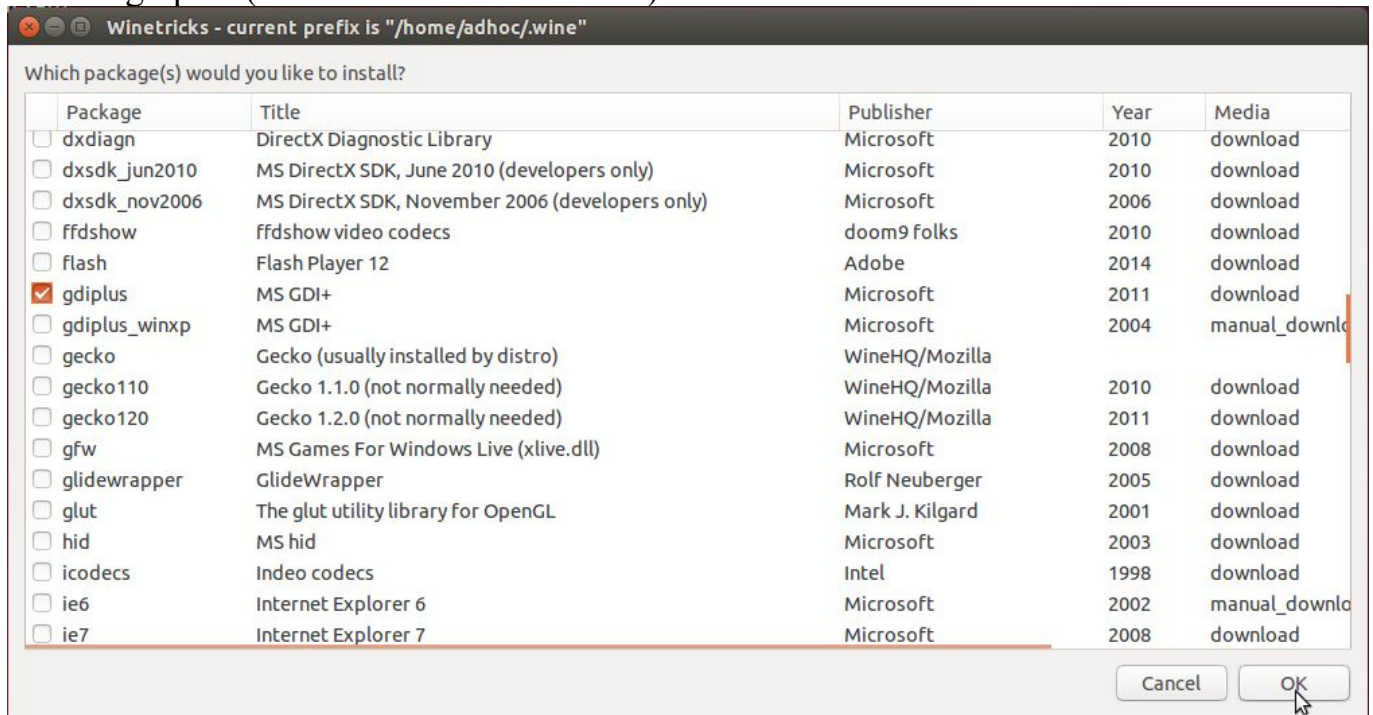
- mark: Select the default wineprefix



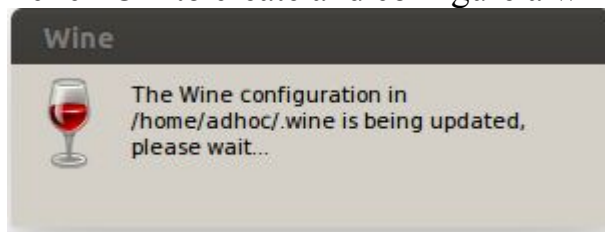
- mark: Install a Windows DLL or component



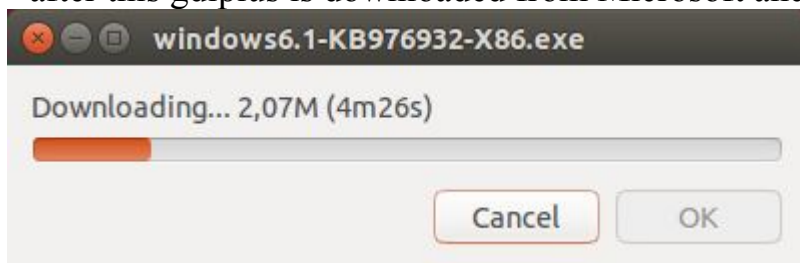
- mark: gdiplus (MS GDI+ Microsoft 2011)



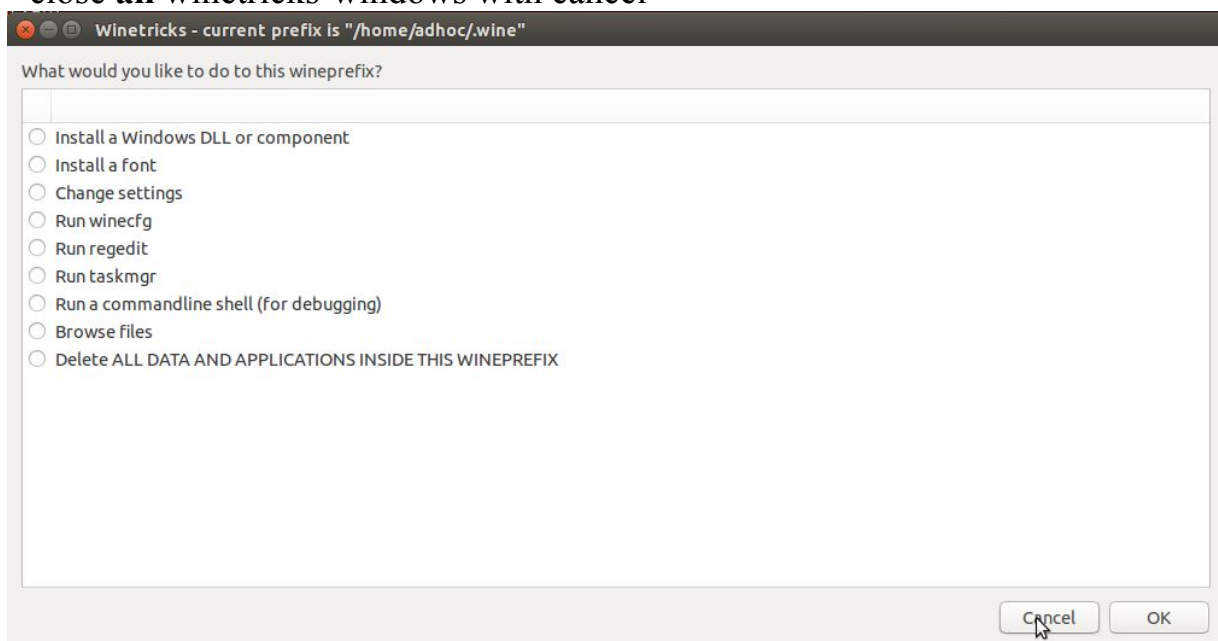
- click OK to create and configure a wine-system (.wine in \$home)



- after this gdiplus is downloaded from Microsoft and installed



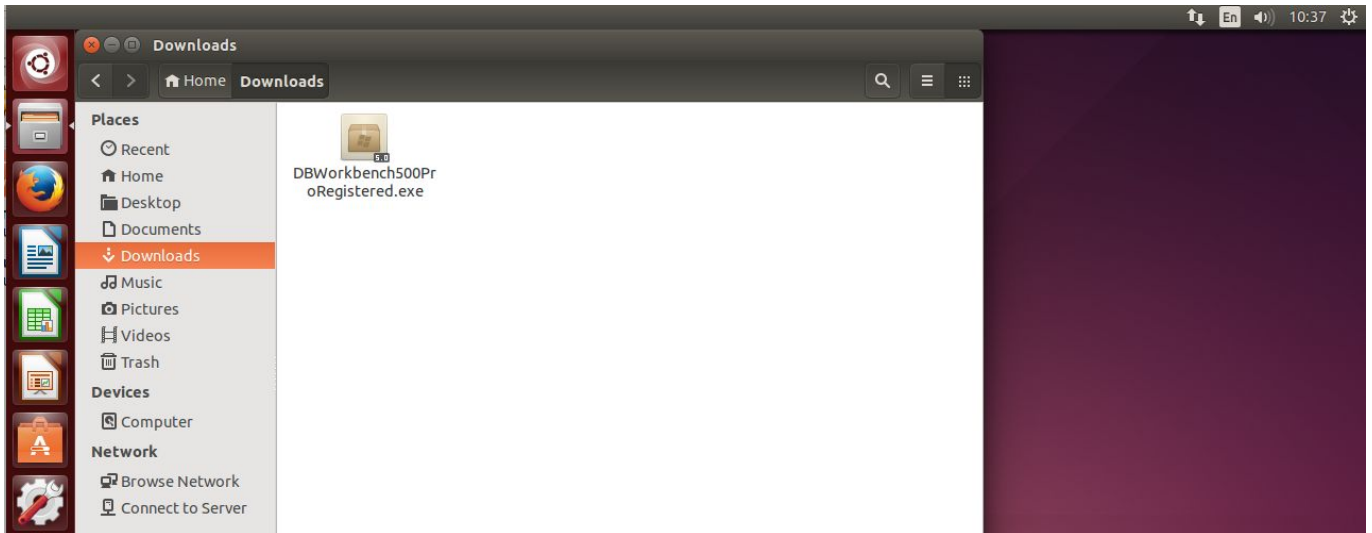
- close **all** winetricks-windows with cancel



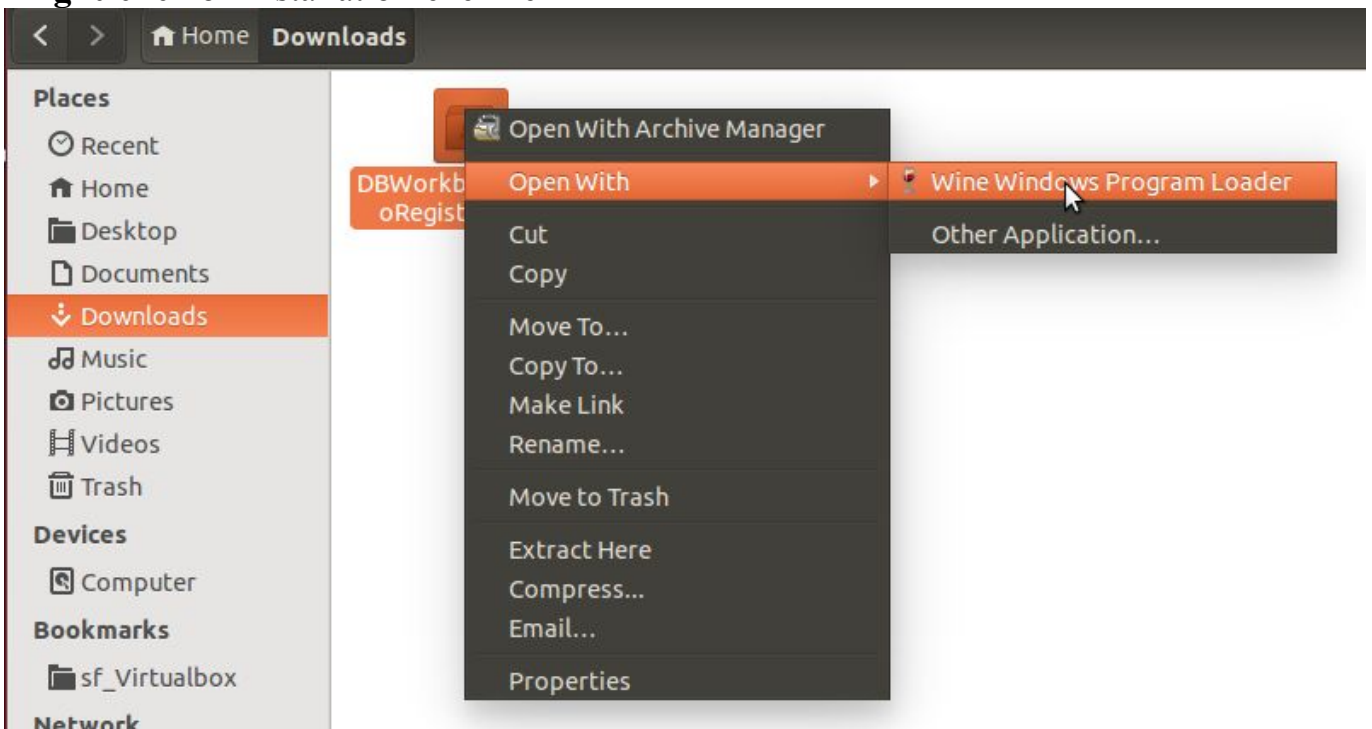


## 2. Installation of Database Workbench 5

- open file-manager *Nautilus* in folder you have downloaded Database Workbench installation file



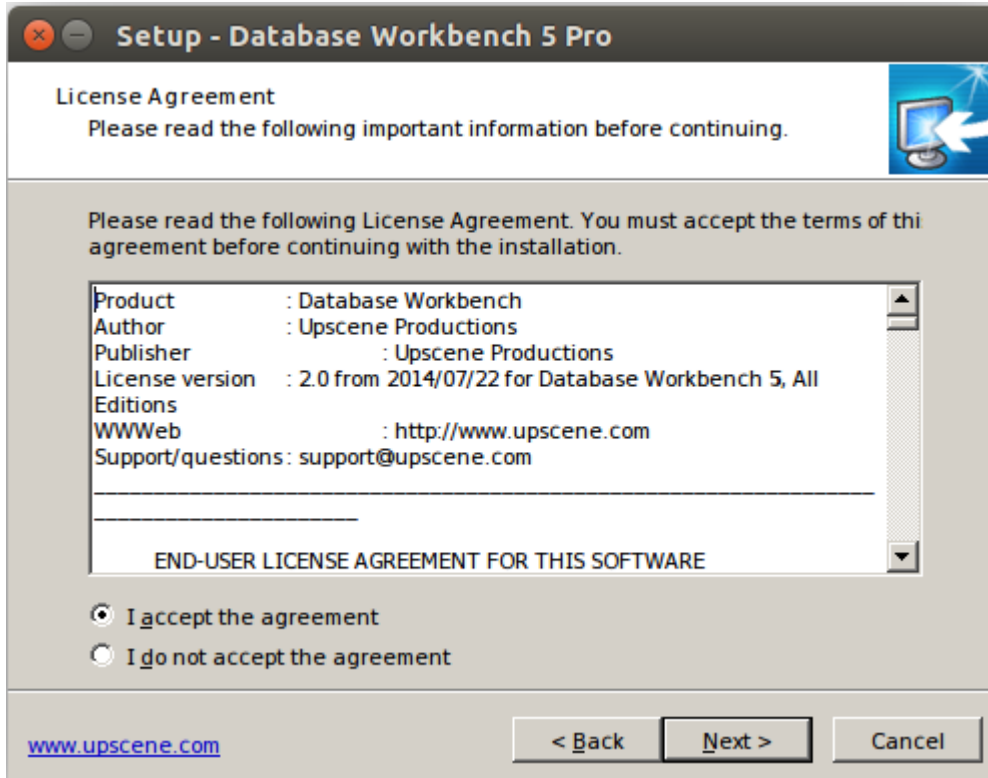
- right-click on installation-exe-file



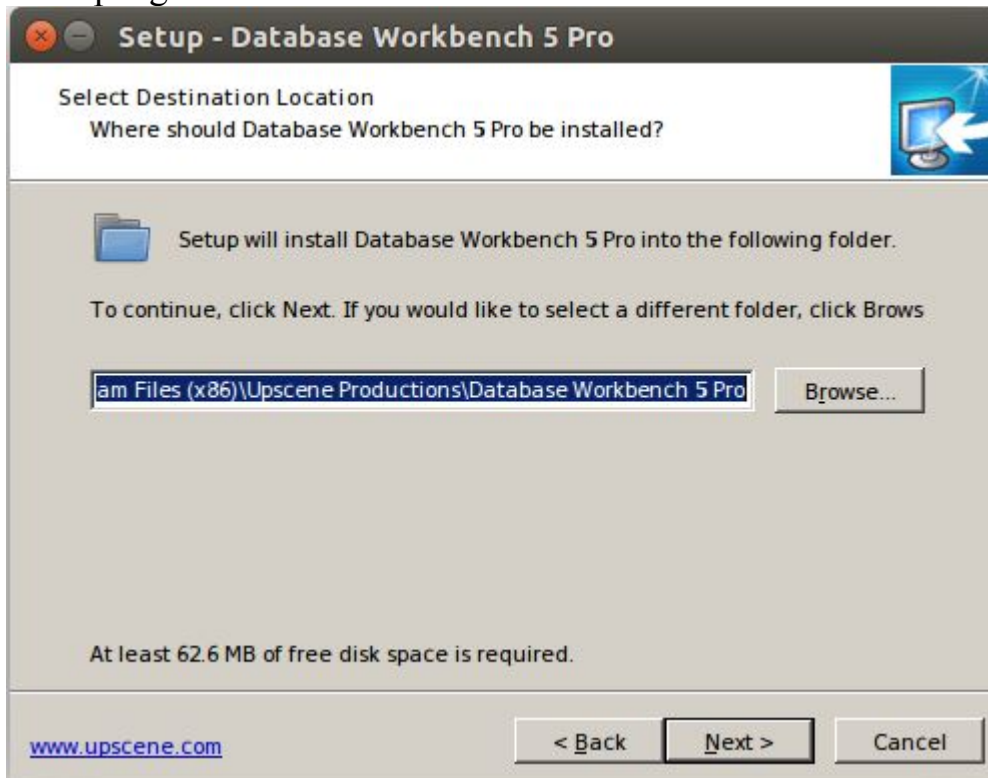
- select: Open With Wine Windows Program Loader



- select: Next



- accept agreement and select: Next



- confirm path of installation (recommended)

*Note:*

- on a 32bit-ubuntu version (or an enforced 32Bit wine version) path is:

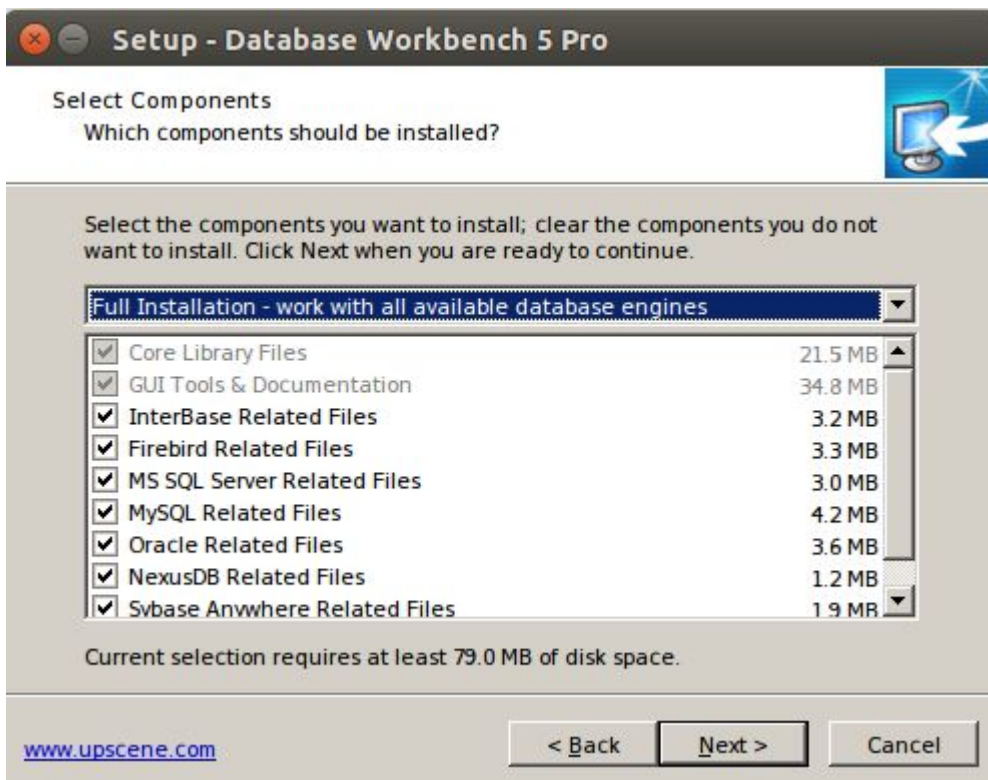
C:\Program Files\...

- on a 64bit-ubuntu version path is:

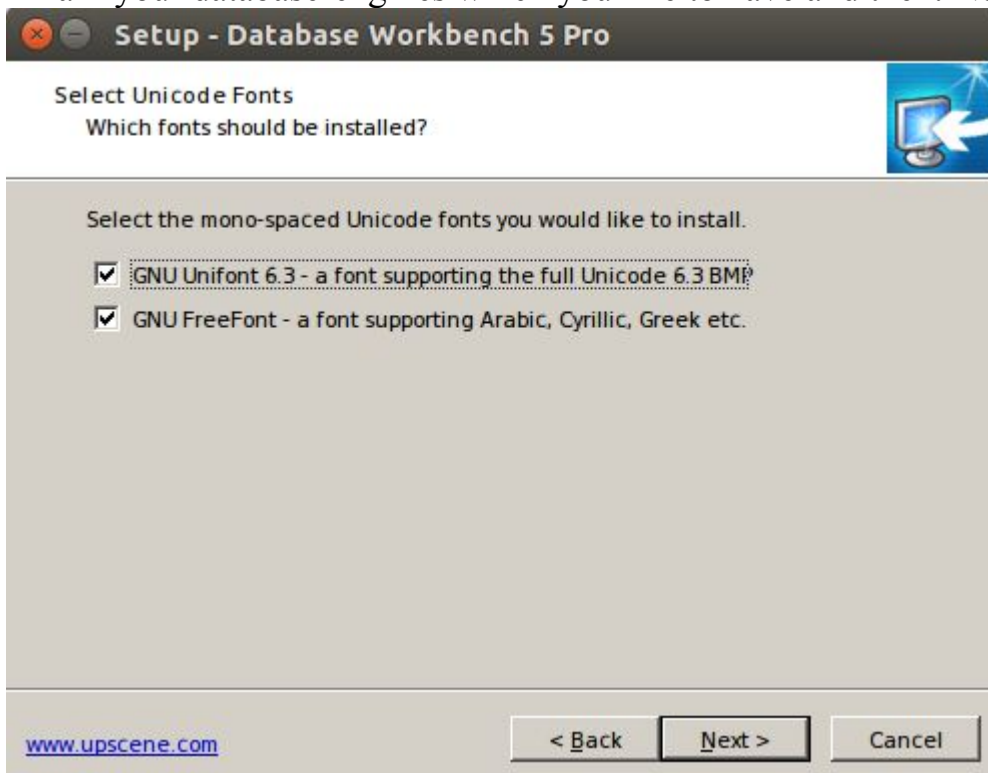
C:\Program Files (x86)\...

(analog to Windows syntax - because Database Workbench is a 32bit-application)

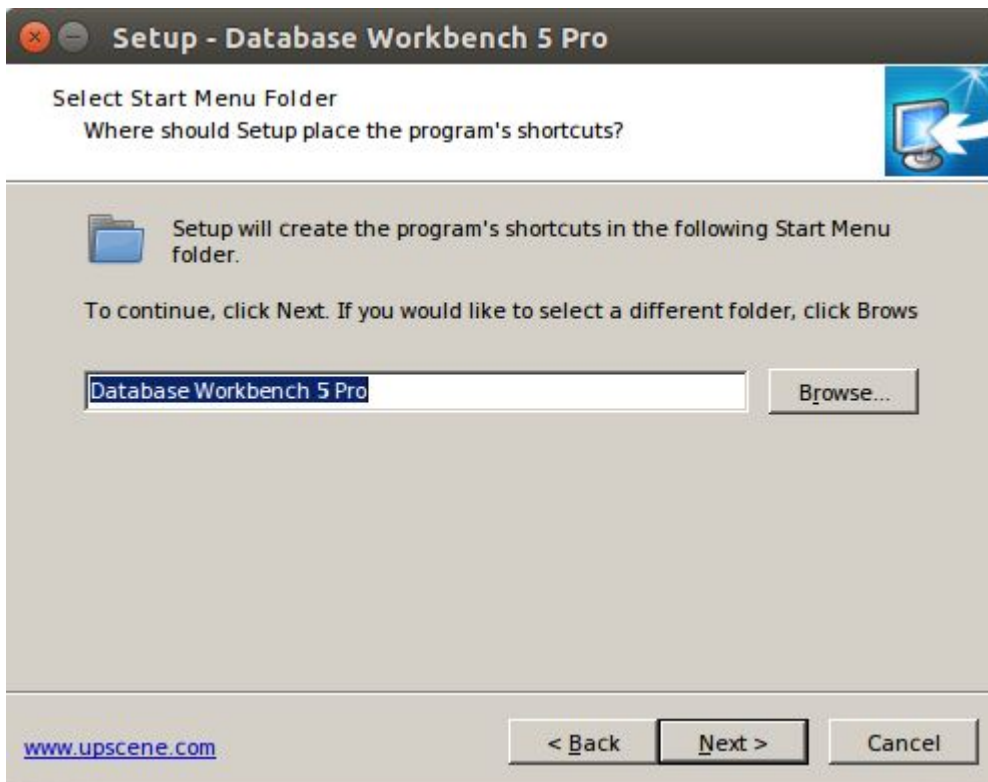




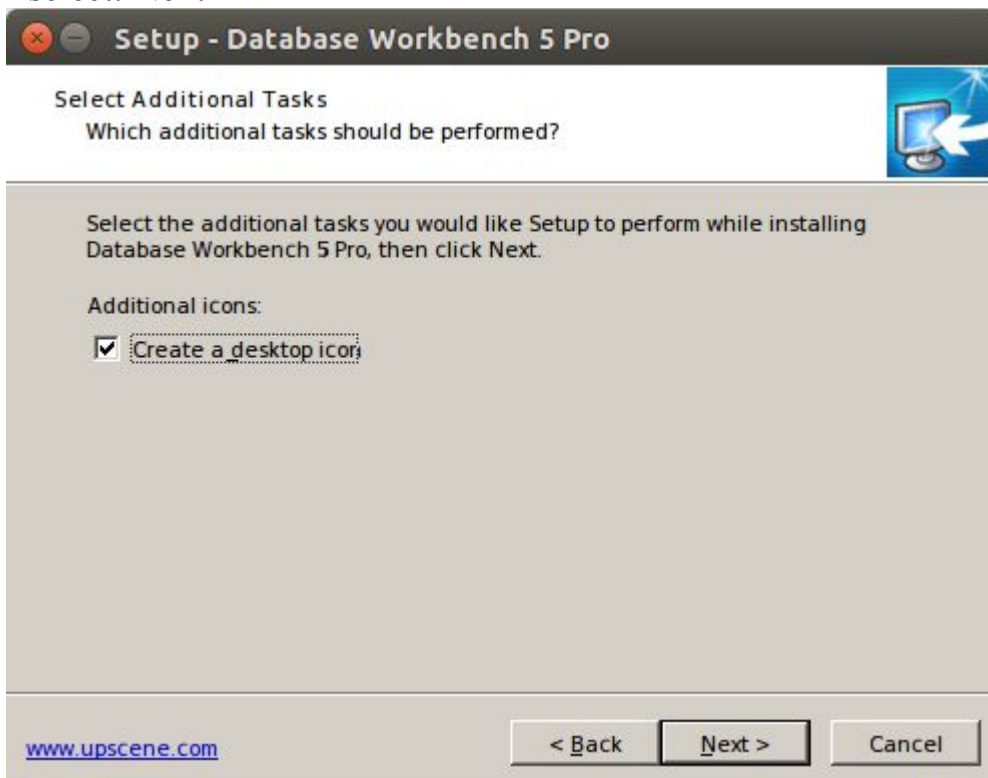
- mark your database-engines which you like to have and then: Next



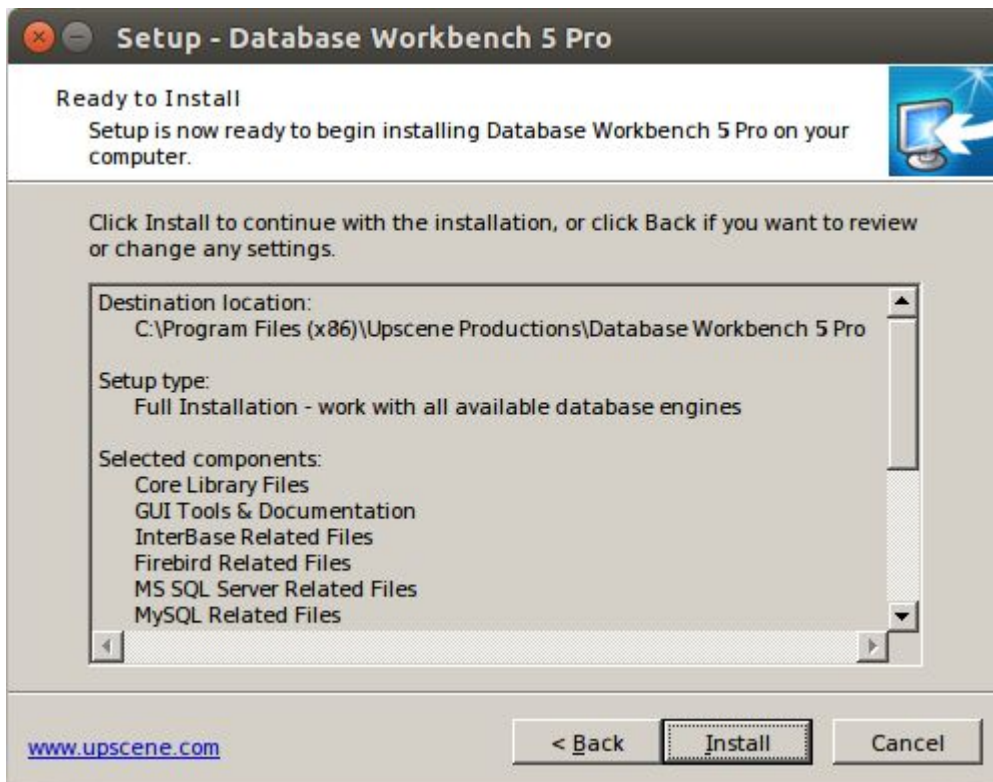
- leave preselection and select: Next



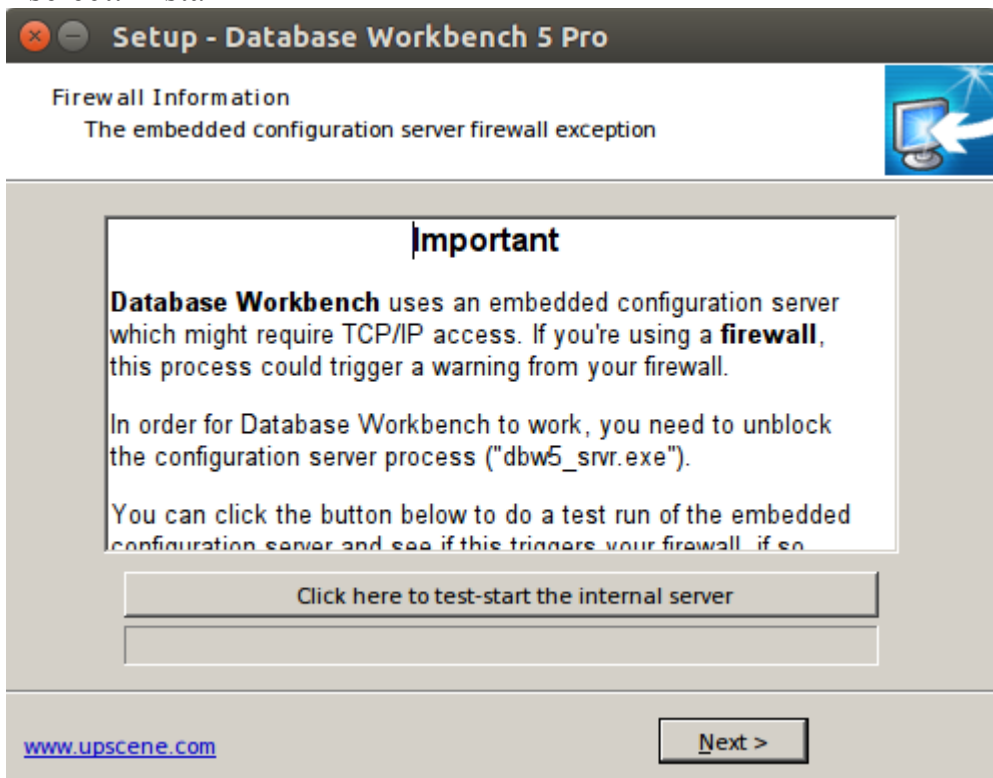
- select: Next



- select: Next

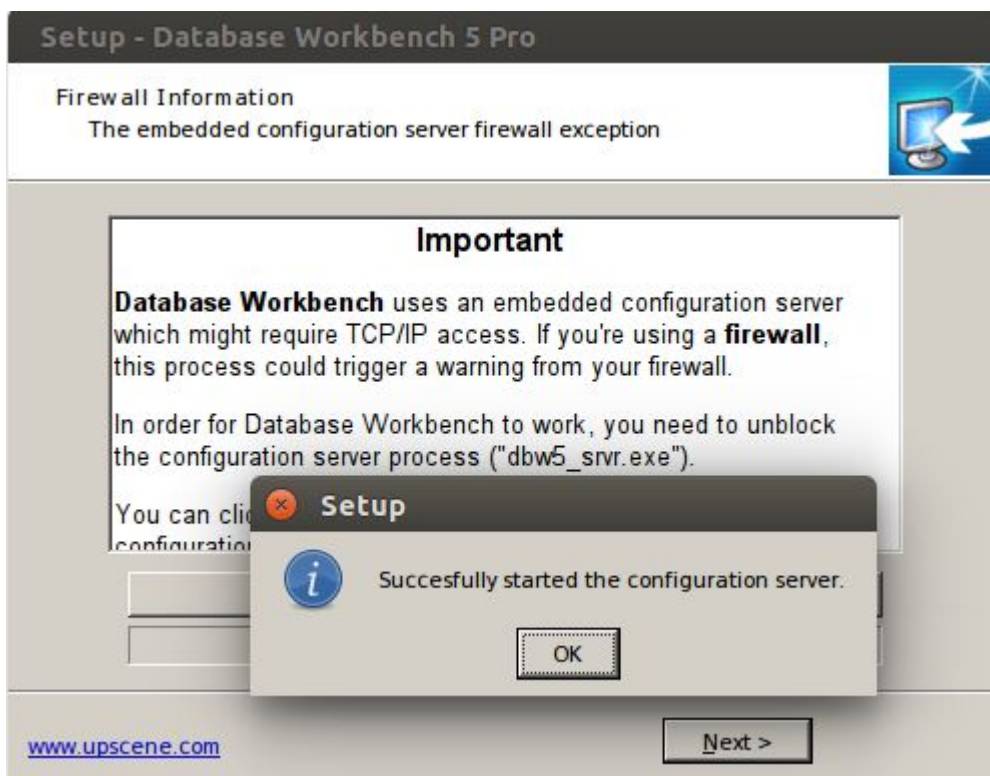


- select: Install

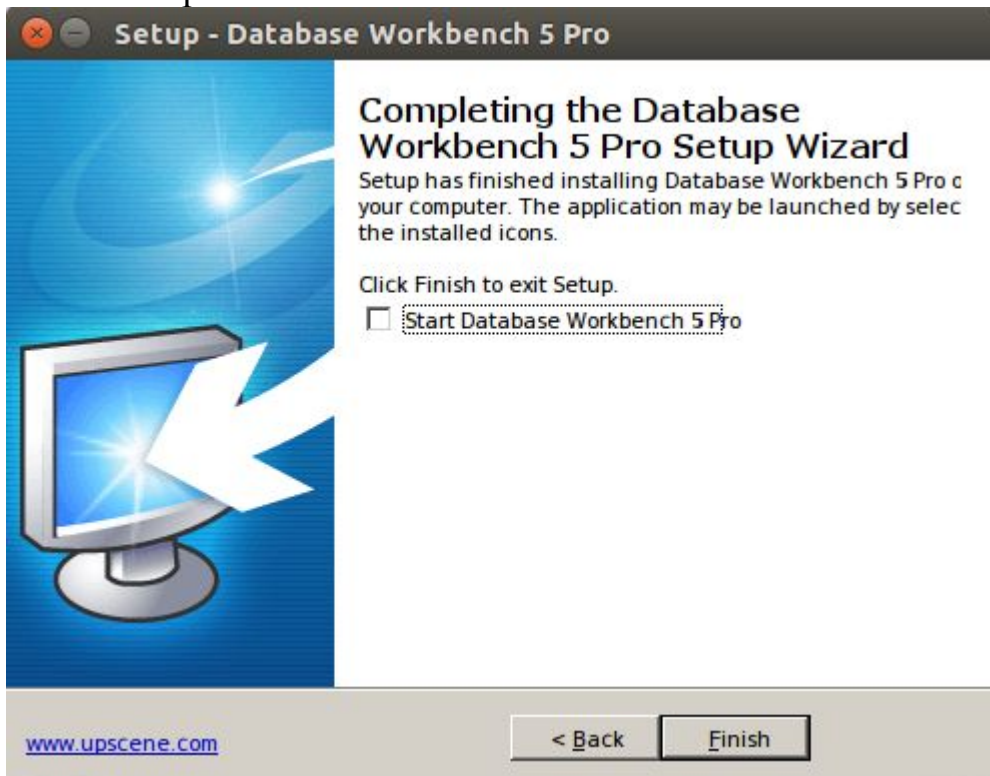


- (optional) select: Click here to test-start the internal server





- finish setup with OK



- unmark preselection of Start Database Workbench 5 Pro and then: Finish

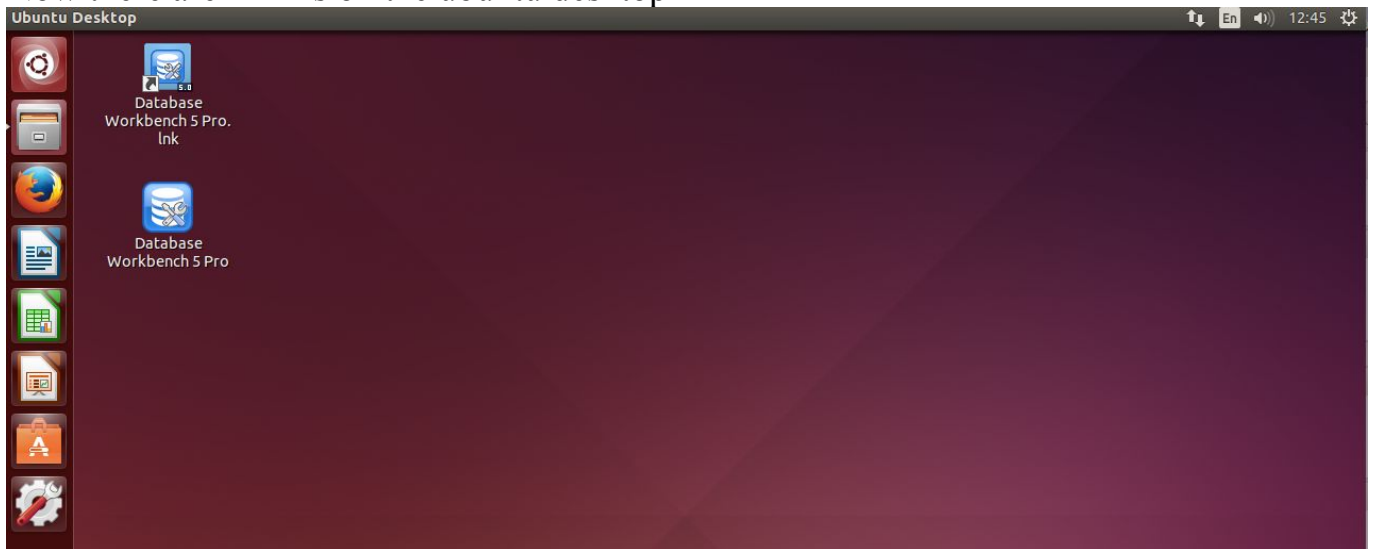
*Note:*

It's recommended to do the first start from the ubuntu desktop and not from a running setup-program in wine

- the setup is finished and returned to the ubuntu desktop

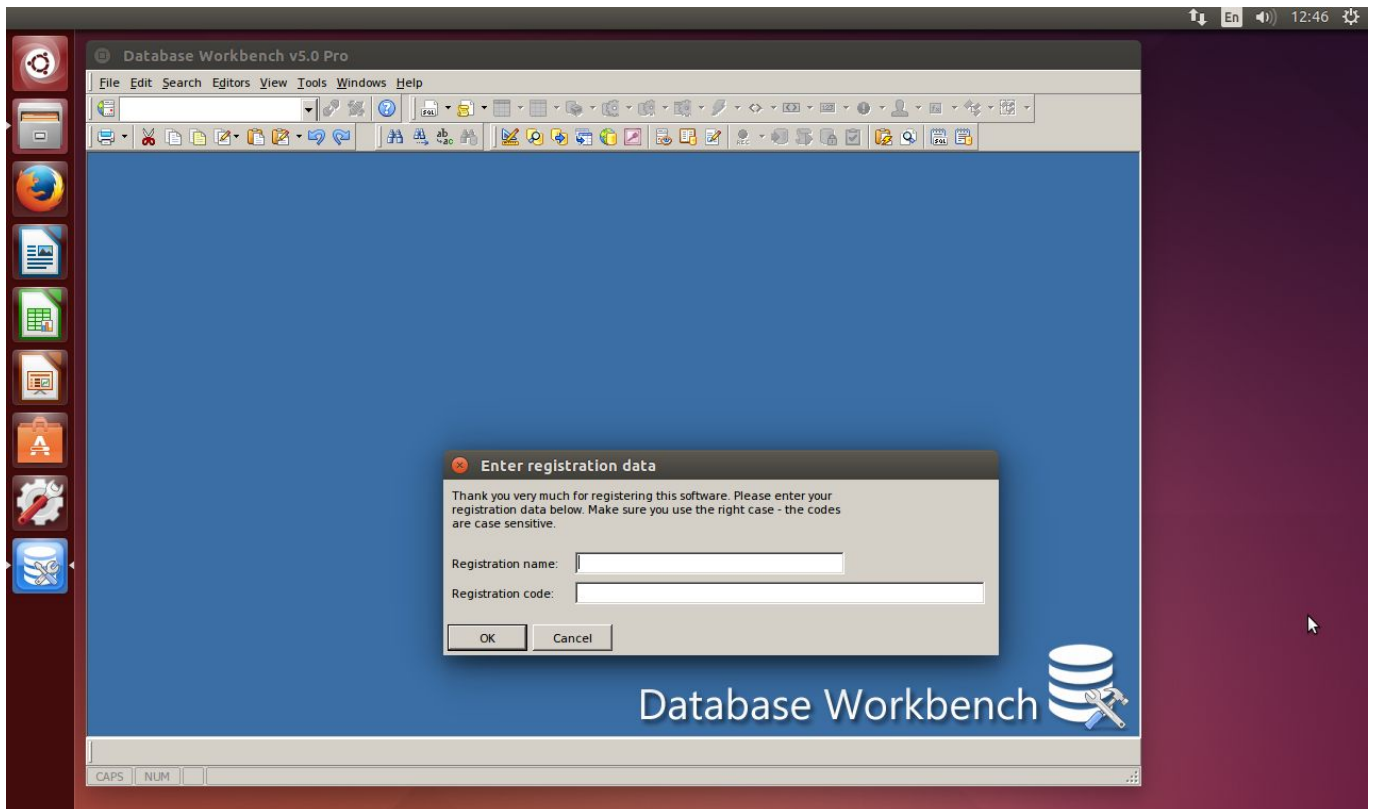
## Database Workbench 5 first start

Now there are 2 links on the ubuntu desktop

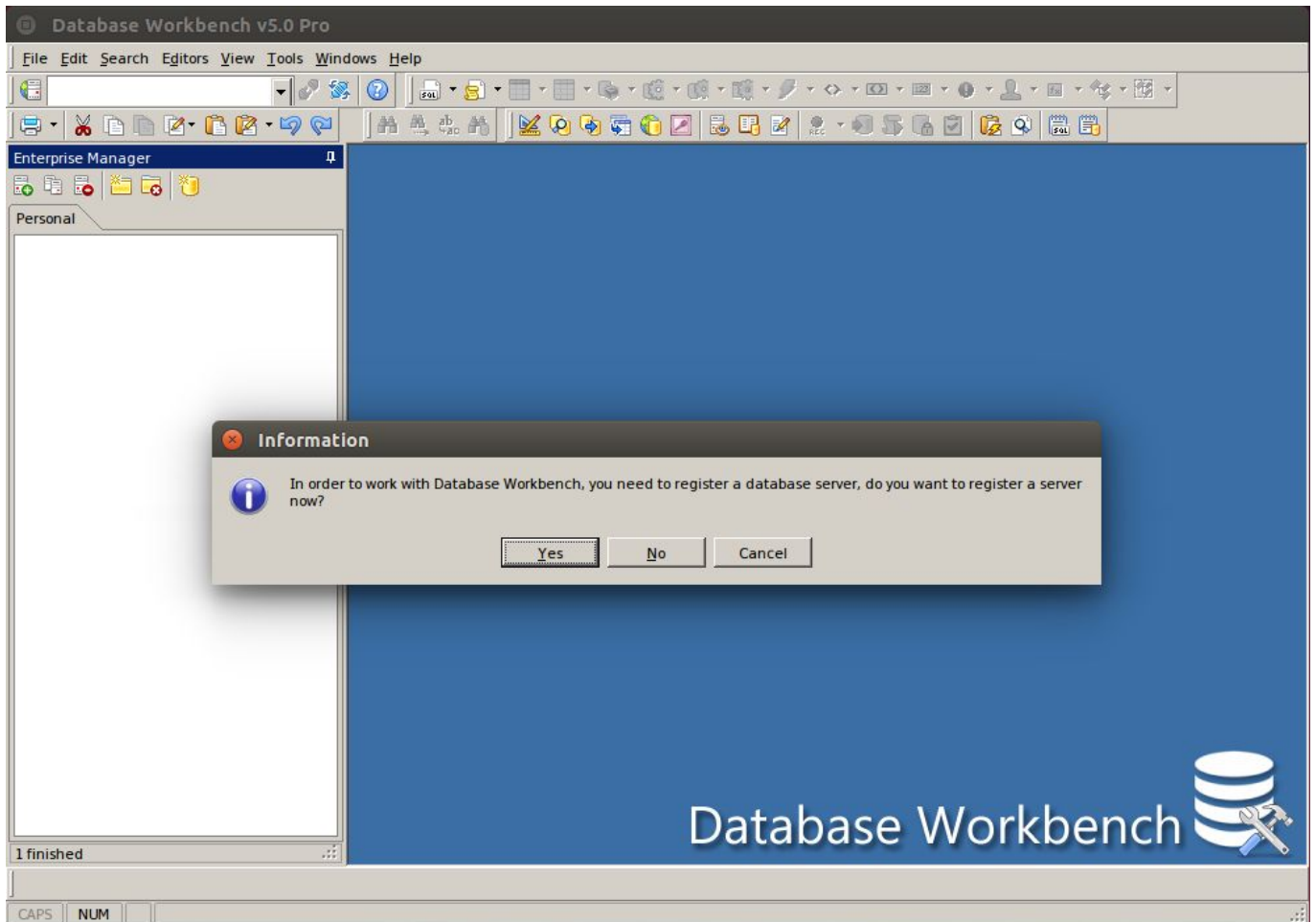


- delete the link *Database Workbench 5 Pro.lnk*

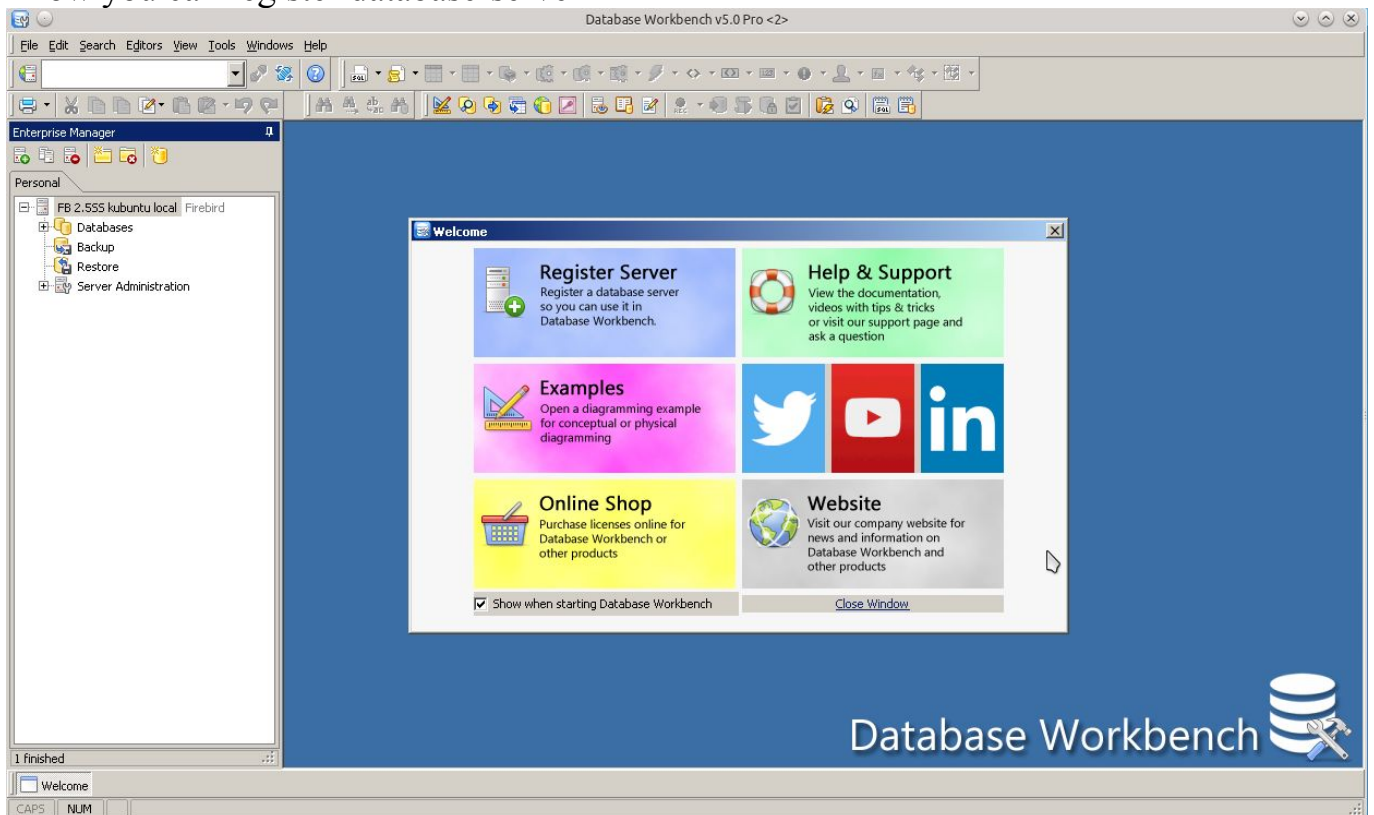
Start *Database Workbench 5 Pro* with double-click on the icon



- submission of your license - which has been send to you by email



- now you can register database-server





Now installation finished, Database Workbench 5 is running with wine in ubuntu!

