

# Installation manual

## Database Workbench 5 in Kubuntu Linux 14.04 LTS Desktop

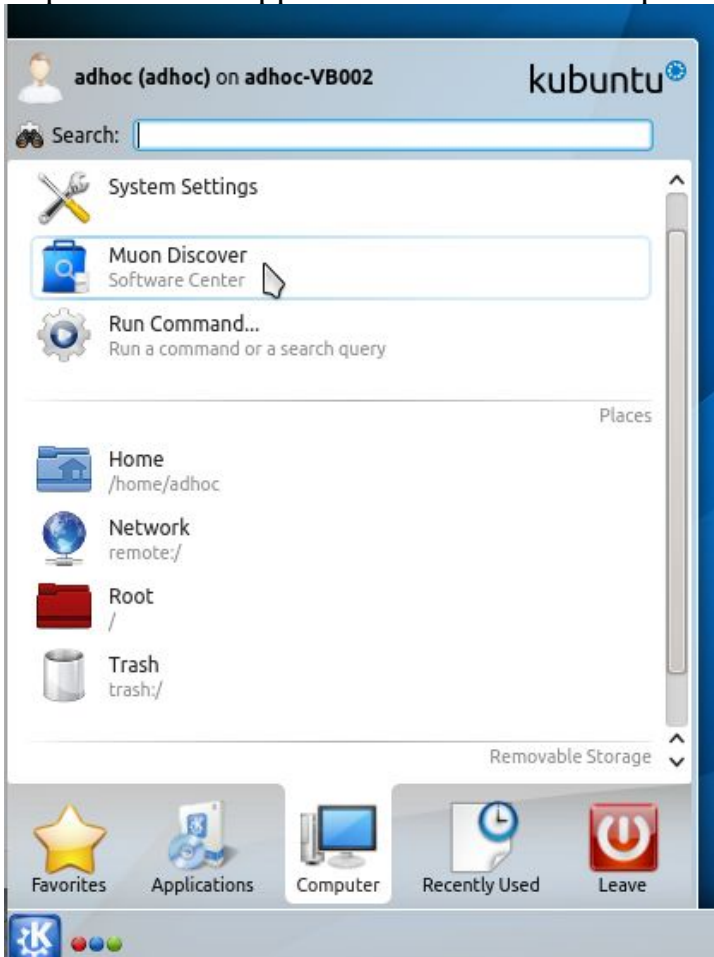
### 0. Requirements

- on the PC must be installed a version of 32- or 64bit Kubuntu 14.04 LTS Desktop
- you need Internet access

### 1. Preliminaries - installation of required software

#### a) Installation Muon Package Manager (optional - for a more comfortable installation)

- open Kickoff Application Launcher/Computer/Muon Discover



- search for muon and *Install*

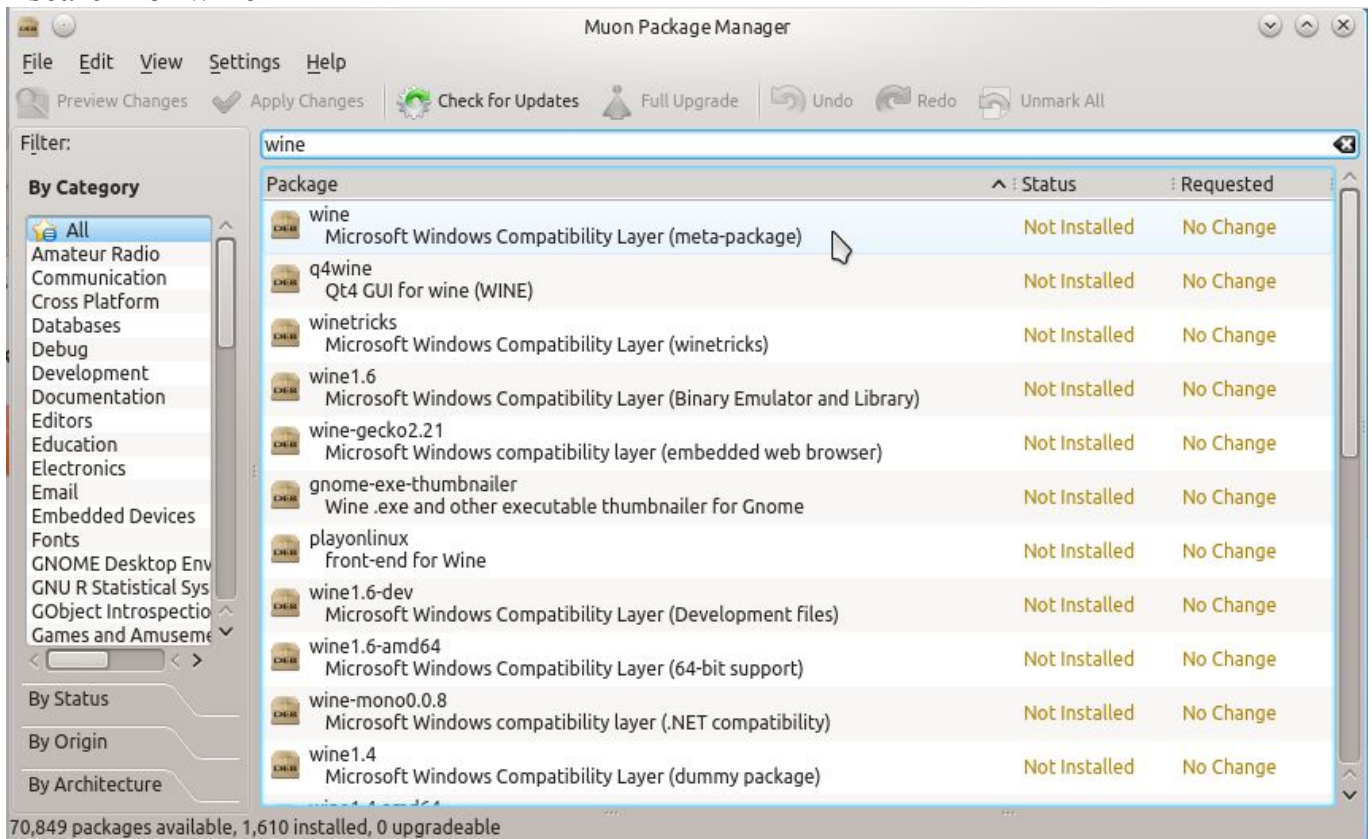


## b) Installation of wine

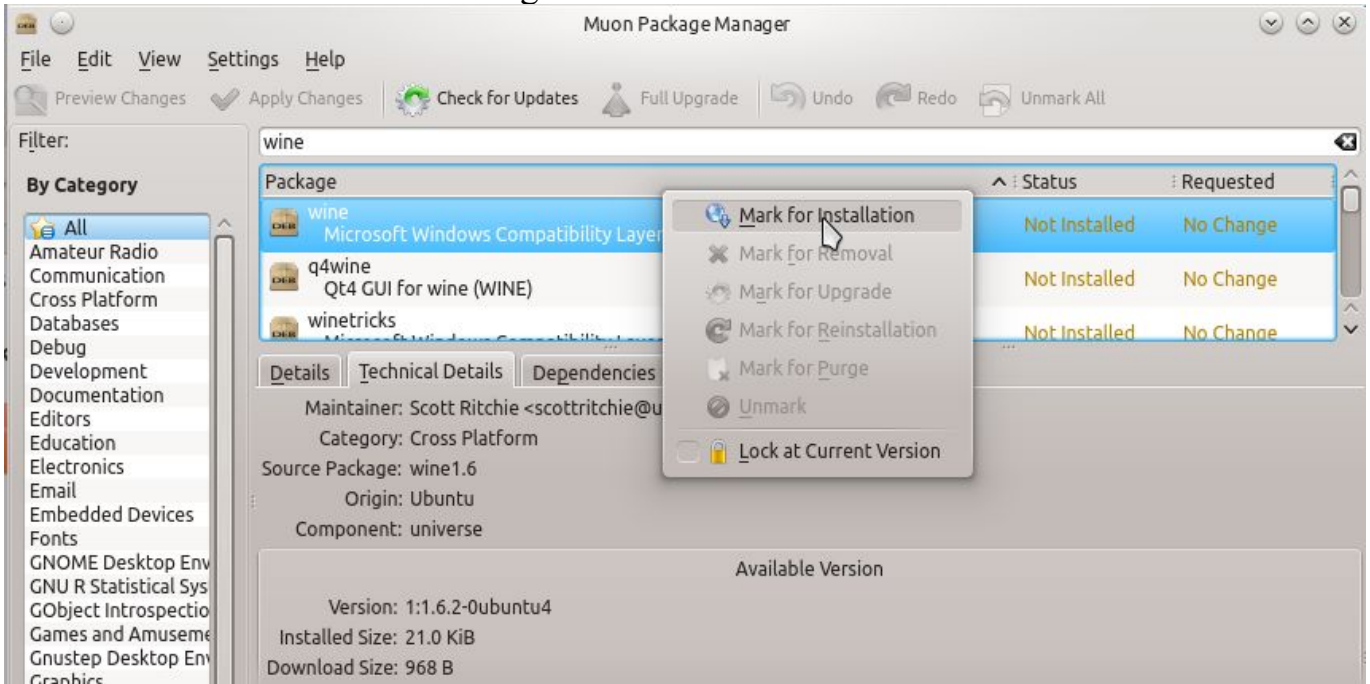
- open Kickoff Application Launcher/Applications/System/Package Manager



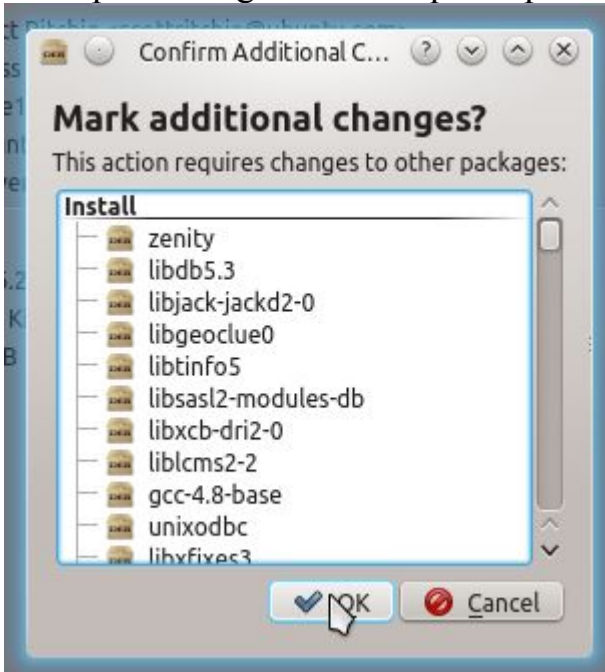
- search for wine



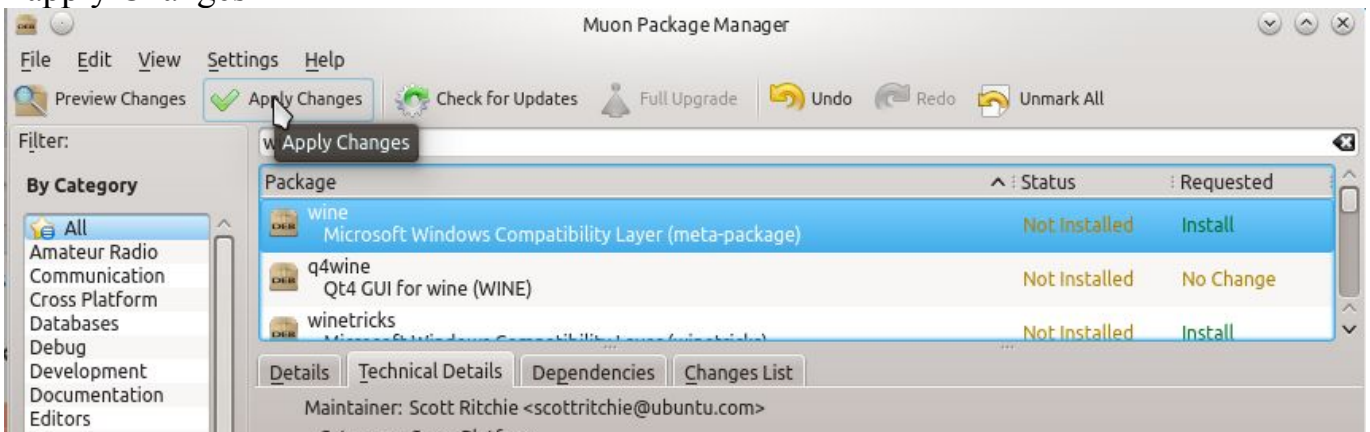
- mark for Installation Meta-Package wine



- accept marking of more required packages

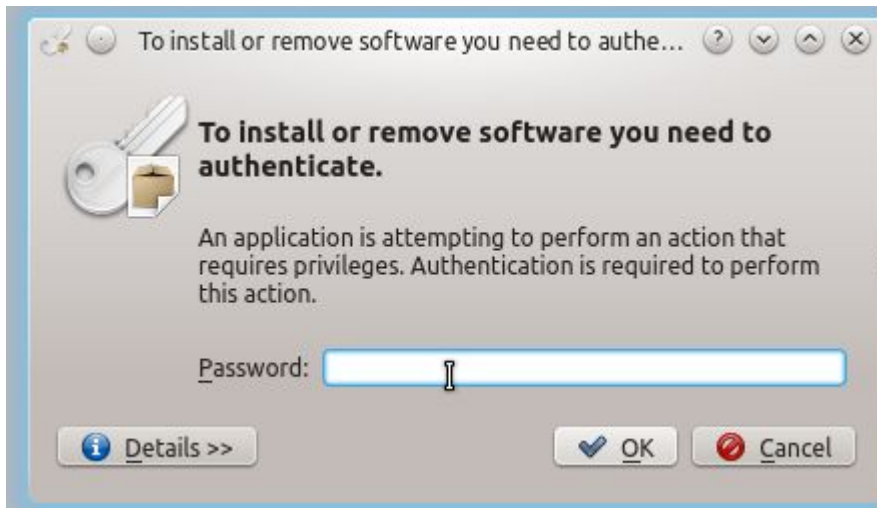


- apply Changes

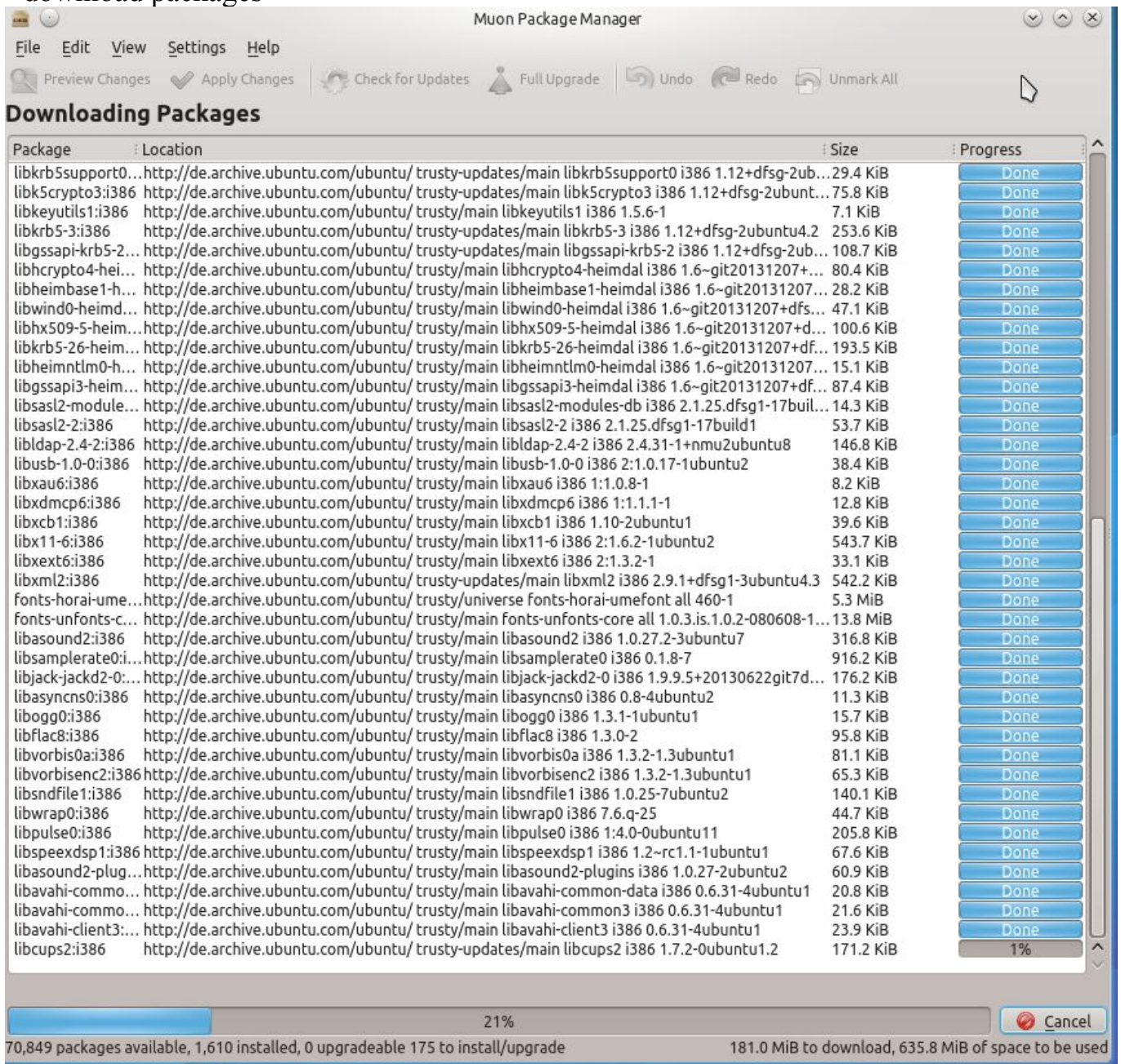




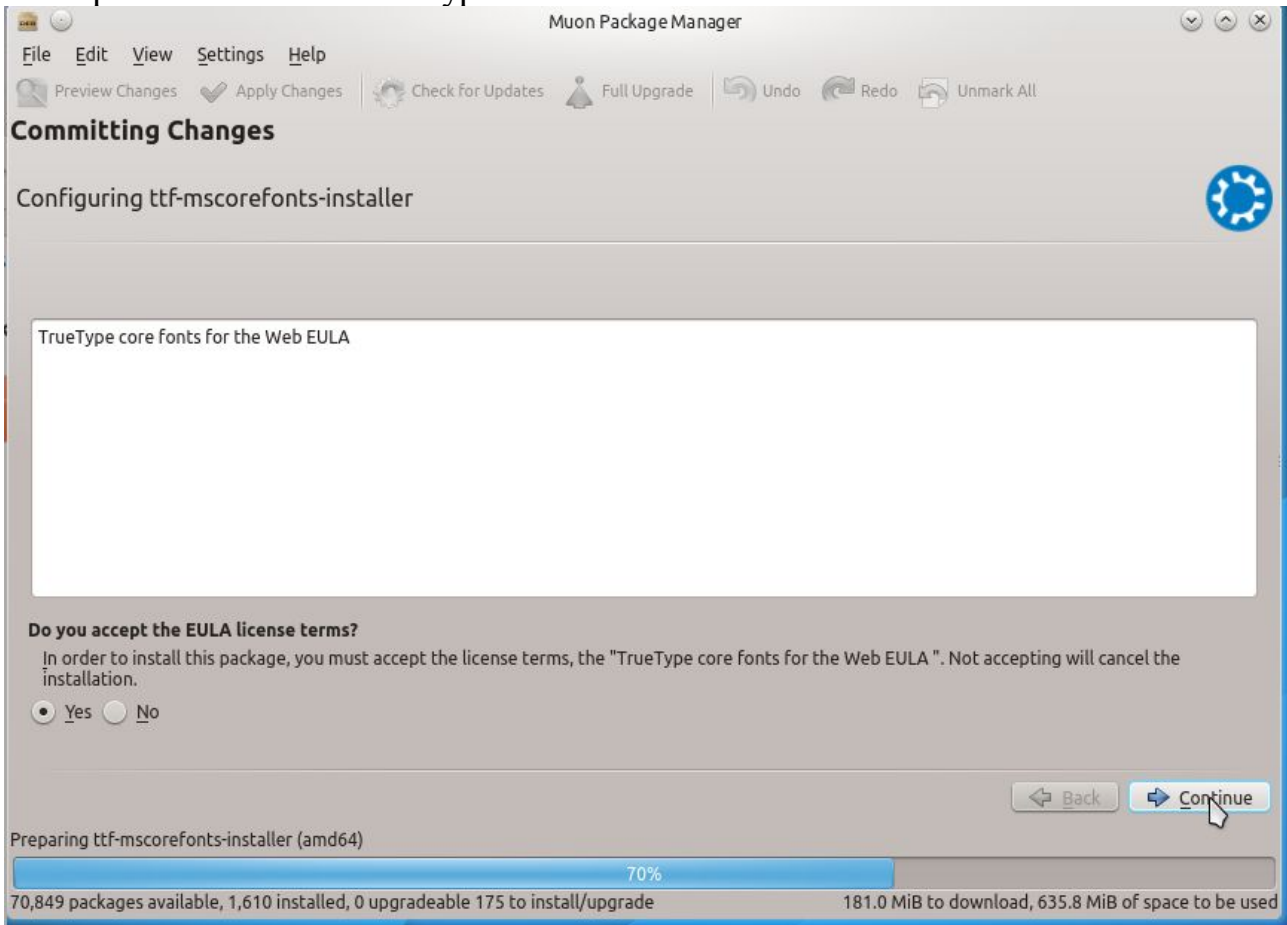
- authenticate



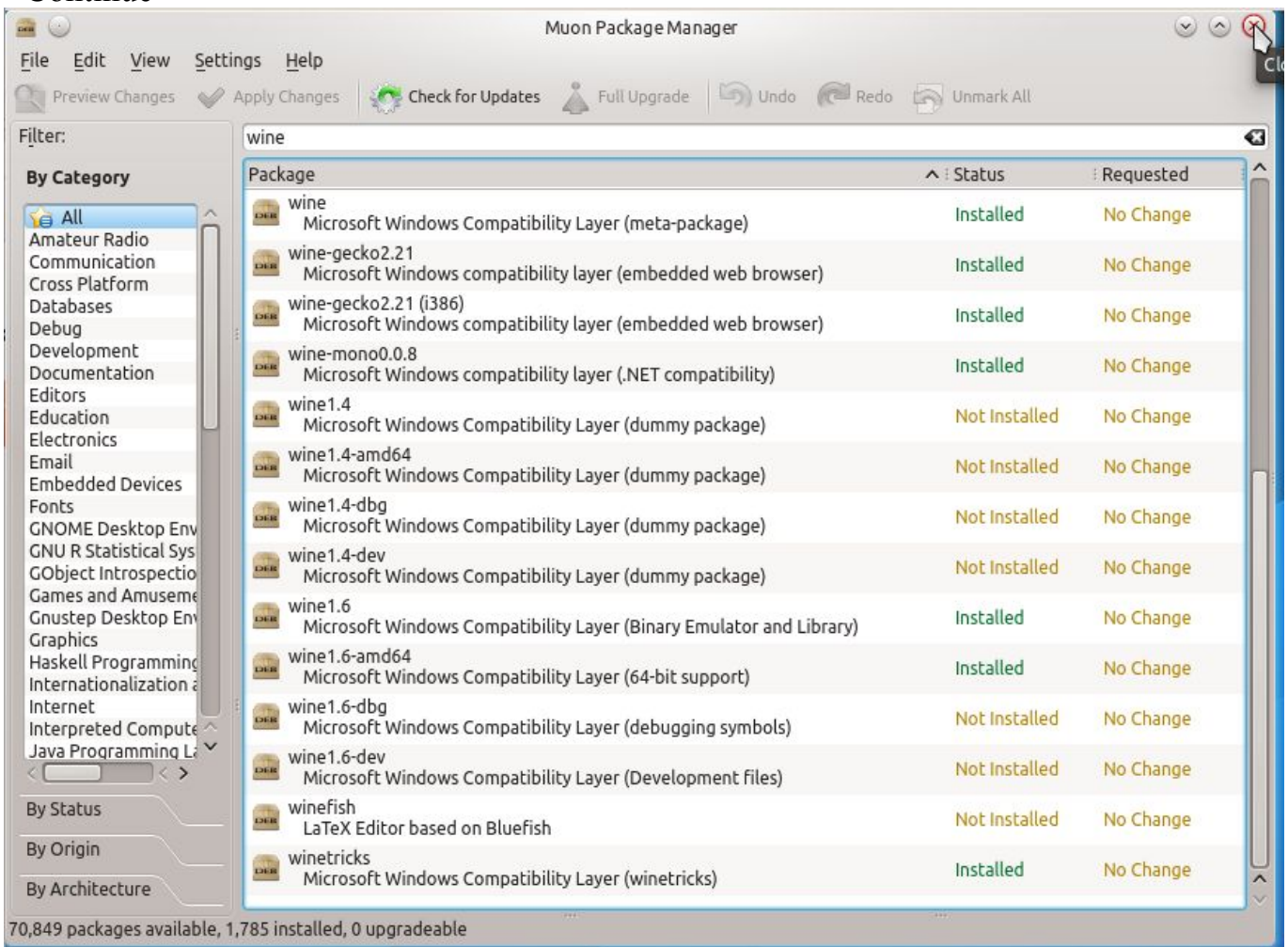
- download packages



- accept the license for TrueType MS-CoreFonts

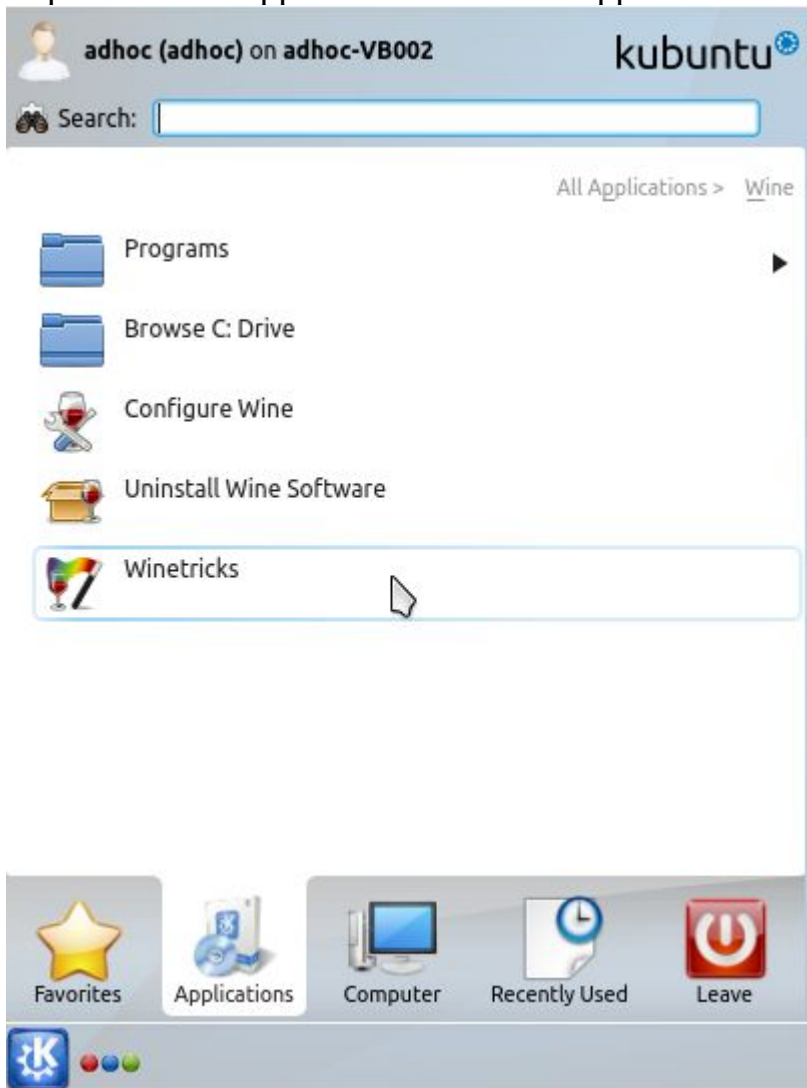


- Continue

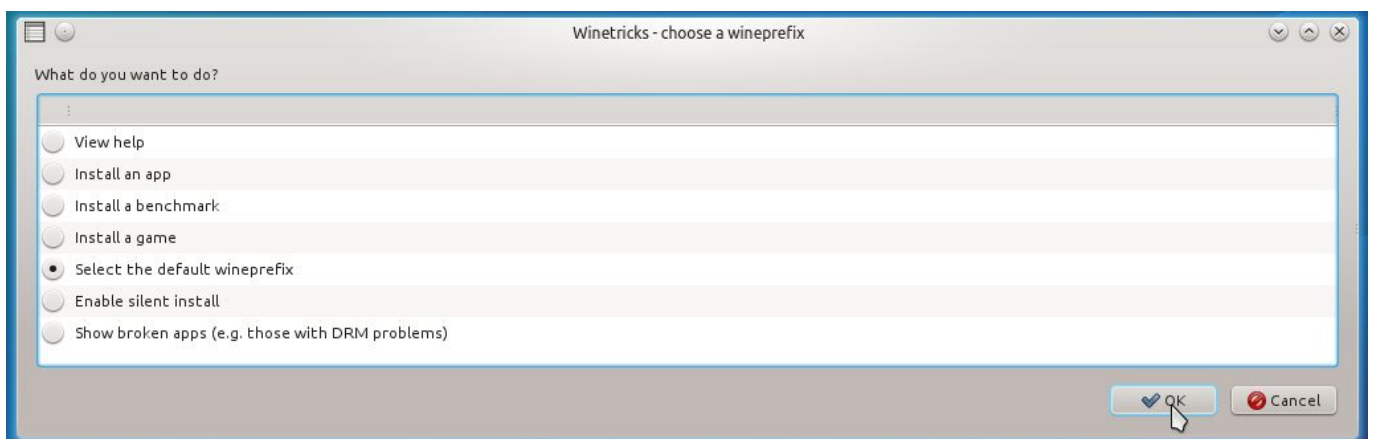
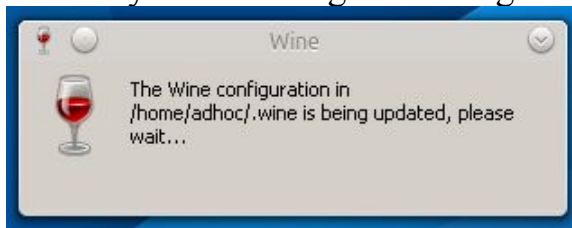




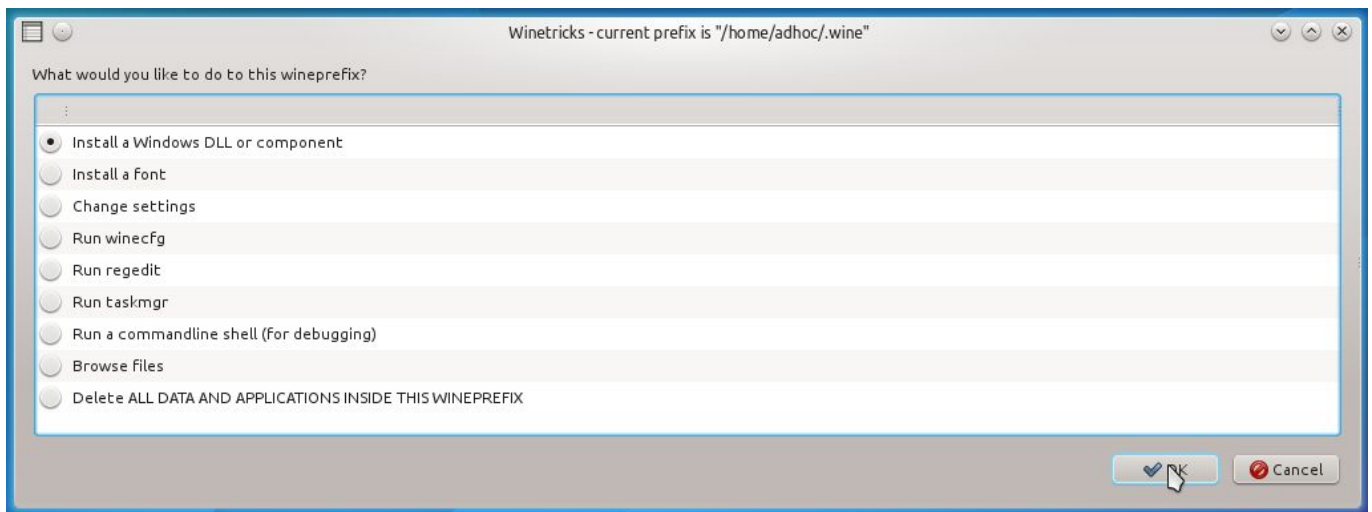
**c) Installation of gdiplus** (a Windows program-library for graphics and formatted text)  
For installation we use the shell-Scripts *winetricks* (was installed together with wine)  
- open Kickoff Application Launcher/Applications/Wine/Winetricks



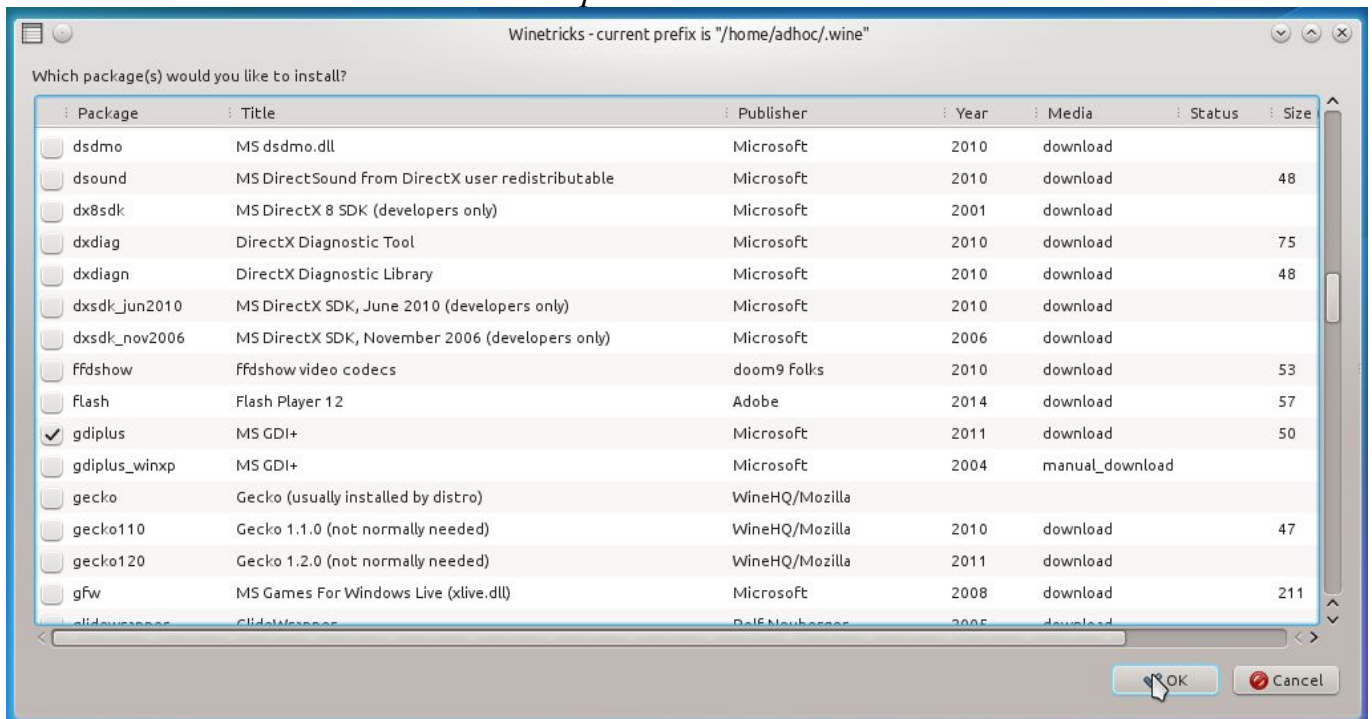
- wine-system creating and configuring (.wine in \$home)



- mark: *Select the default wineprefix*

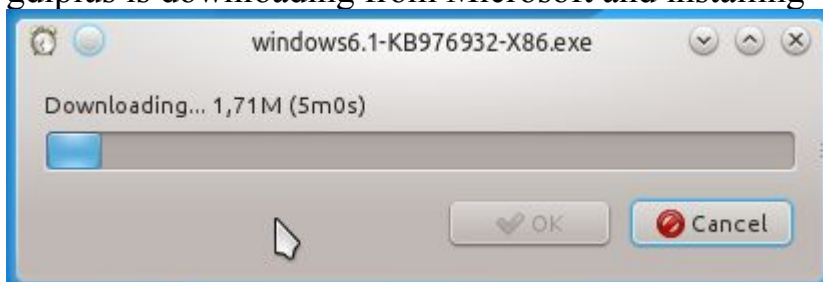


- mark: *Install a Windows DLL or component*



- mark: *gdiplus (MS GDI+ Microsoft 2011)*

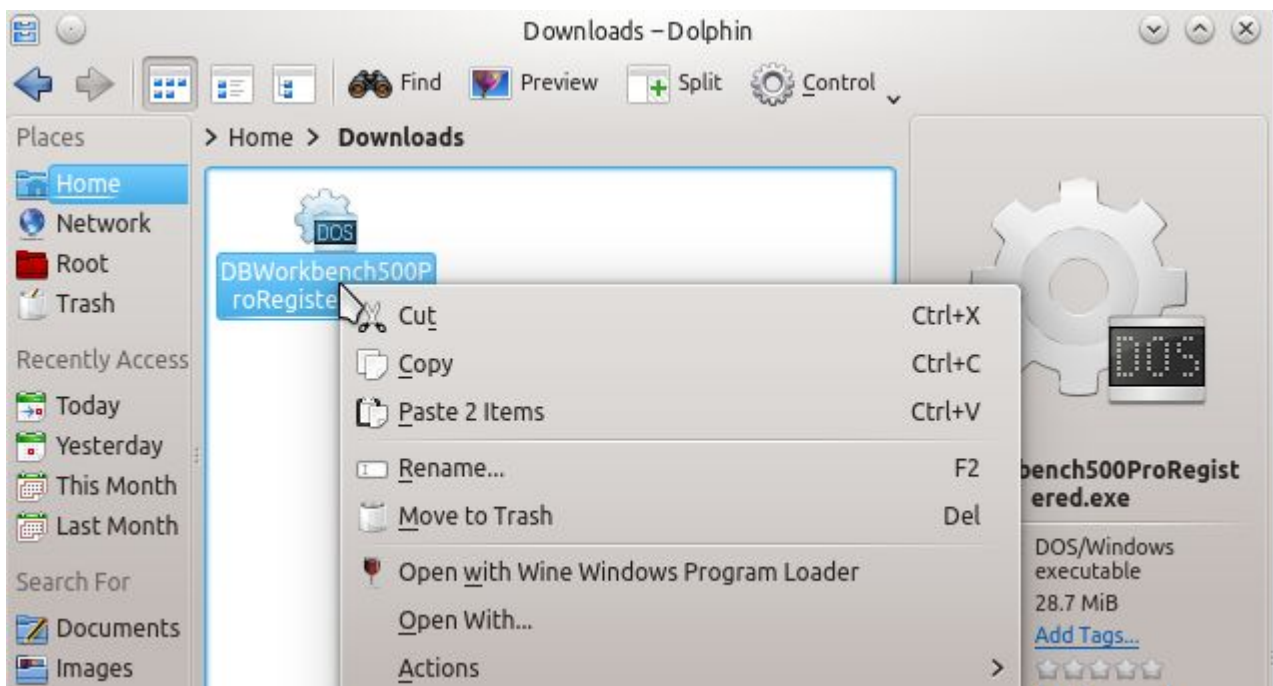
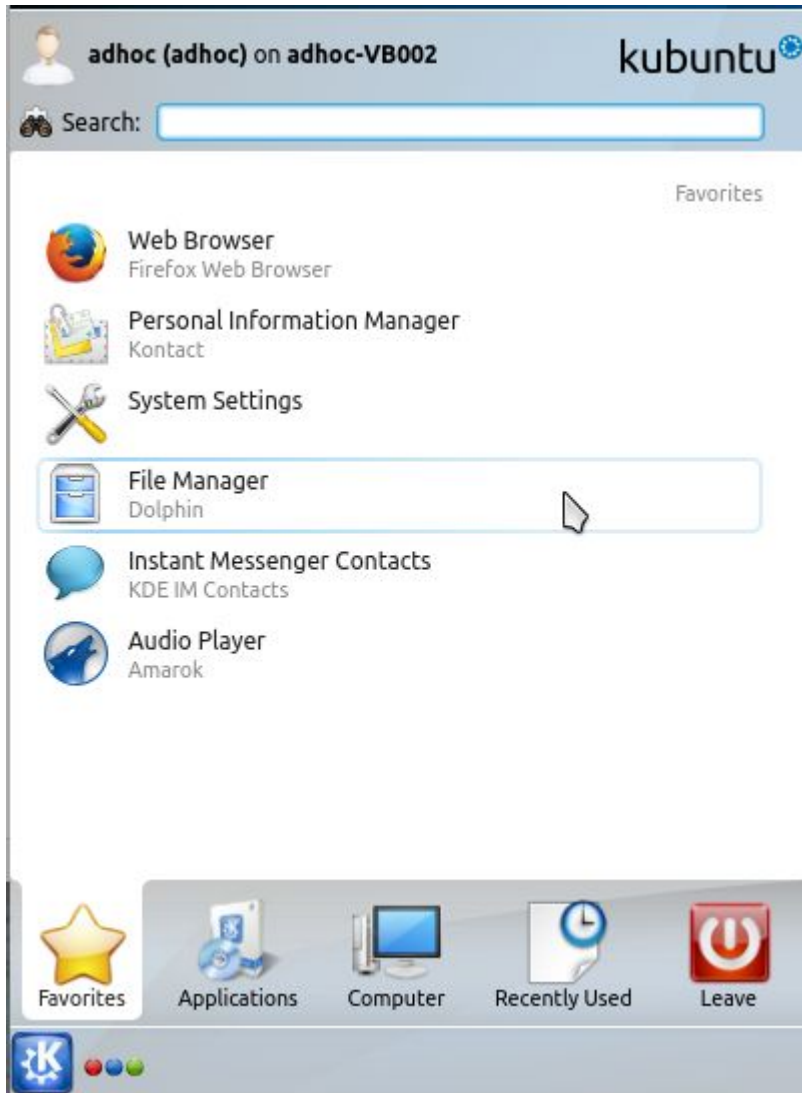
gdiplus is downloading from Microsoft and installing



- close **all** winetricks-windows with cancel

## 2. Installation of Database Workbench 5

- open file-manager *Dolphin* in folder you have downloaded Database Workbench installation file

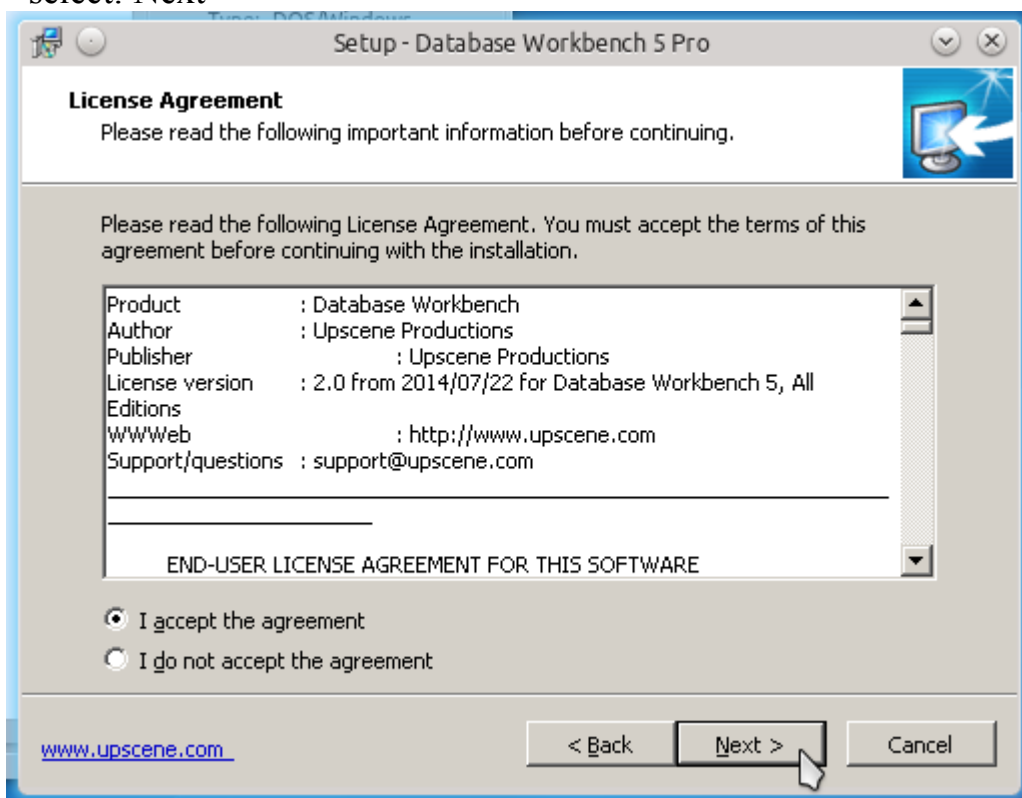


- **right**-click on installation-exe-file and select *Open with Wine Windows Program Loader*

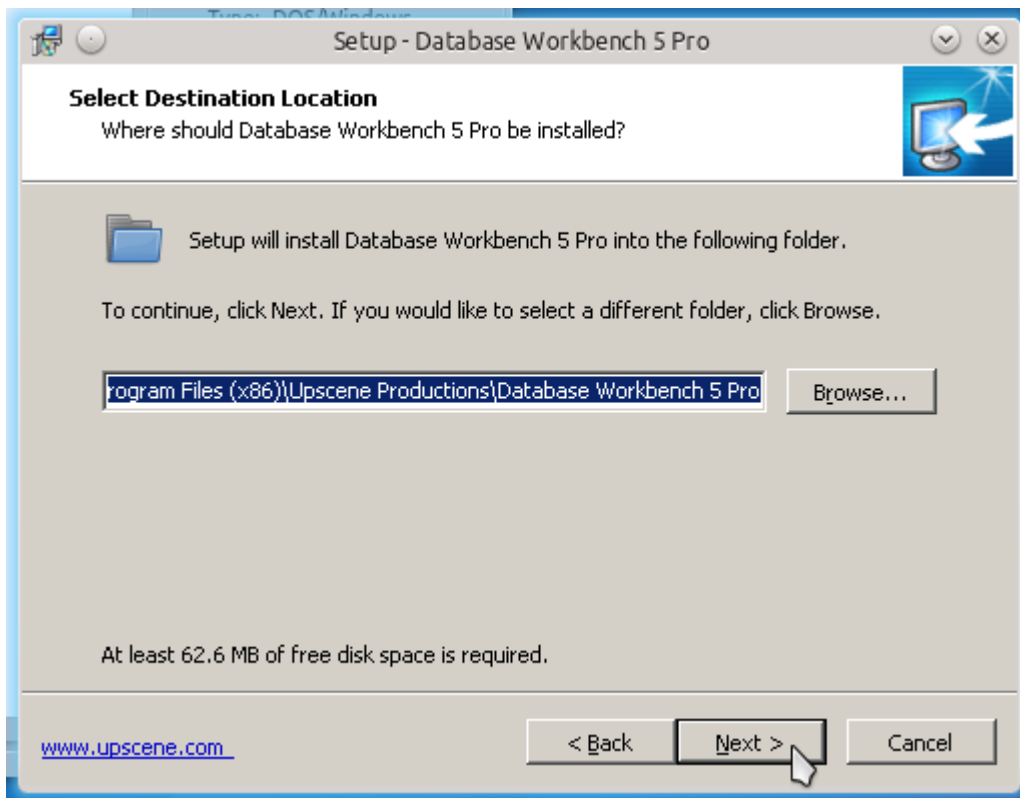




- select: Next



- accept agreement and select: Next



- confirm path of installation (recommended)

*Note:*

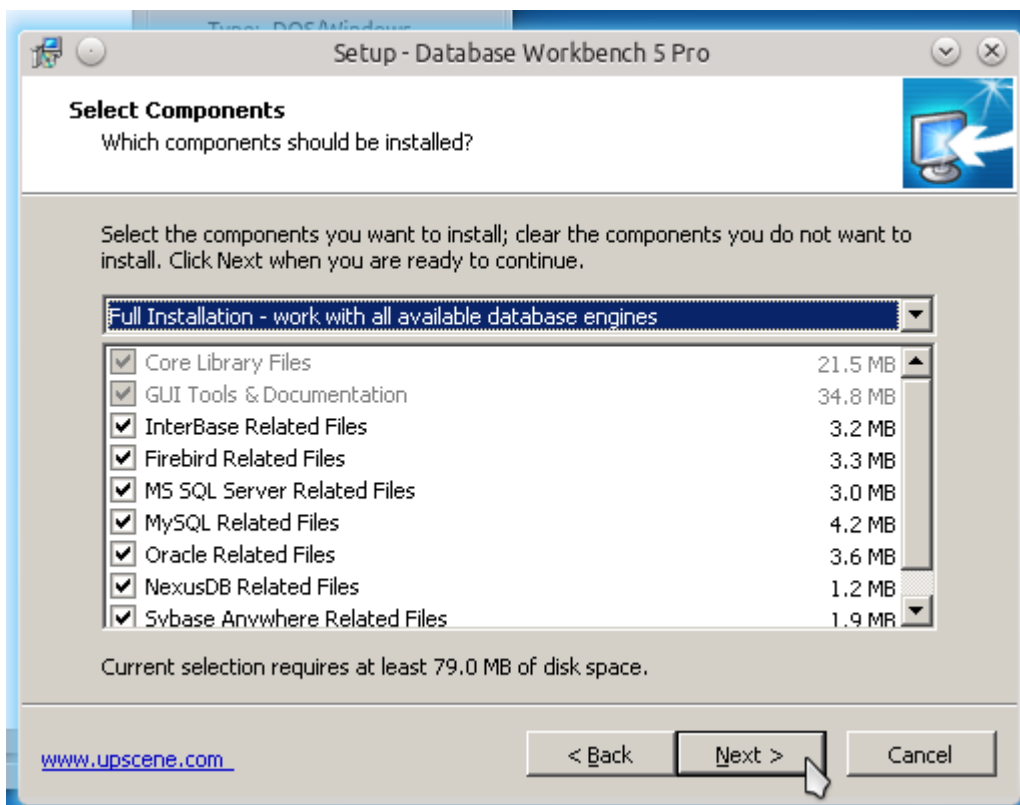
- on a 32bit-kubuntu version (or an enforced 32bit wine version) path is:

C:\Program Files\...

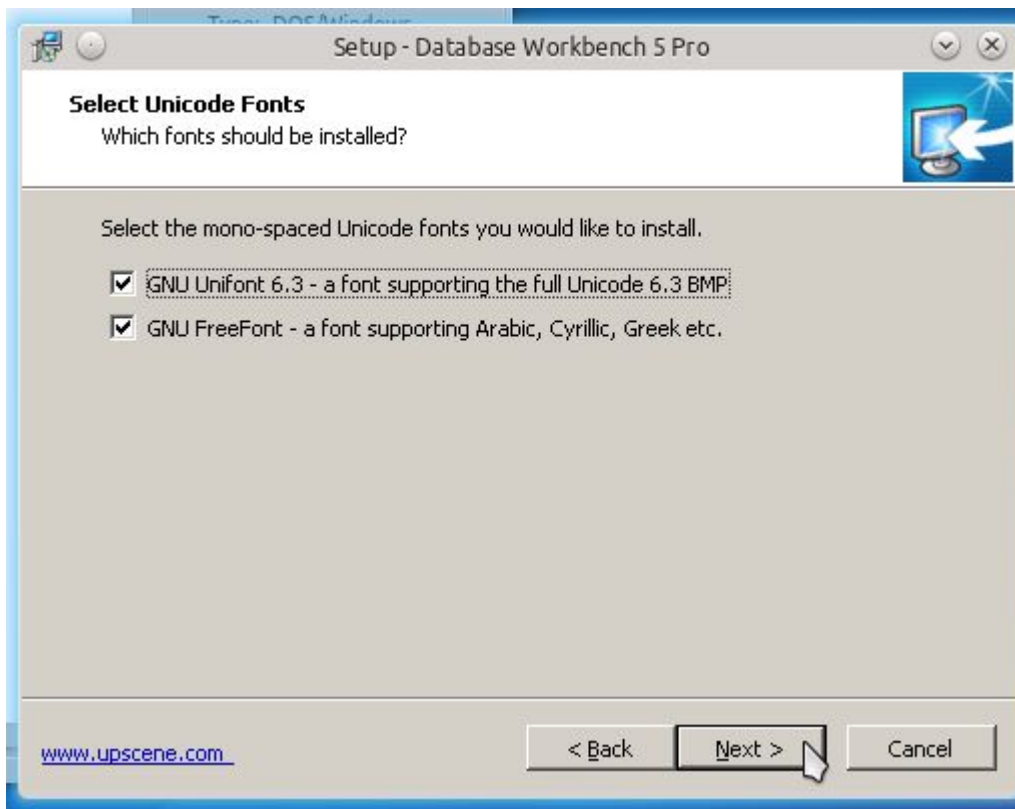
- on a 64bit-kubuntu version path is:

C:\Program Files (x86)\...

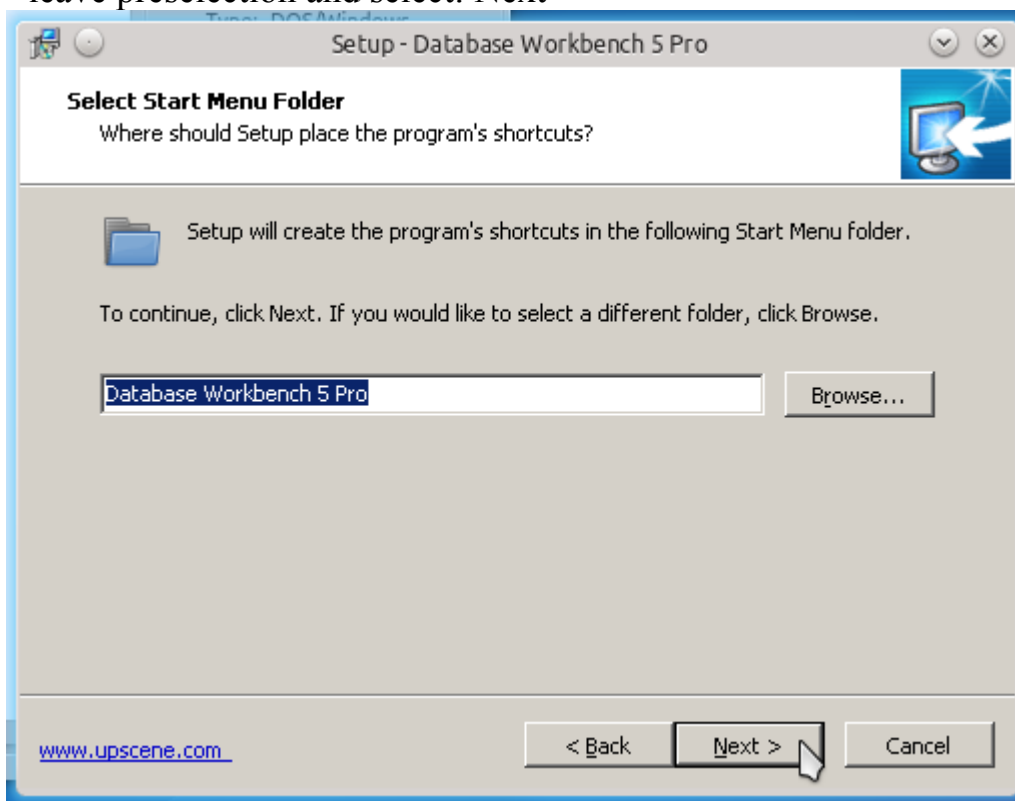
(analog to Windows syntax - because Database Workbench is a 32bit-application)



- mark your database-engines which you like to have and then: Next

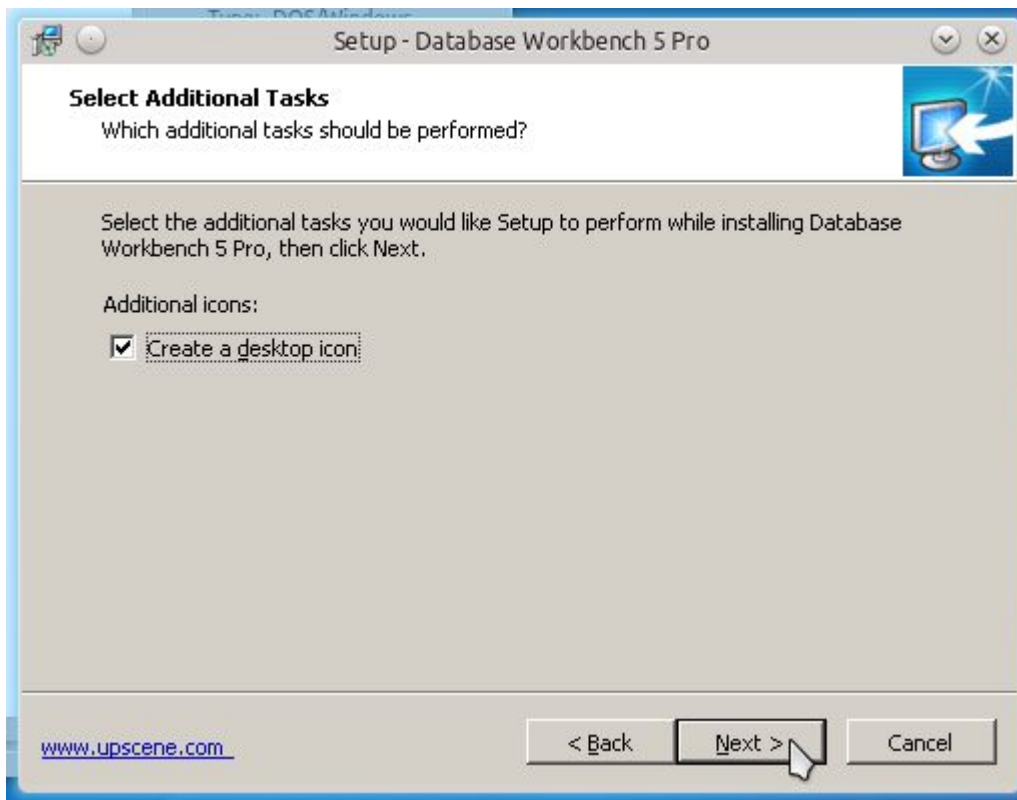


- leave preselection and select: Next

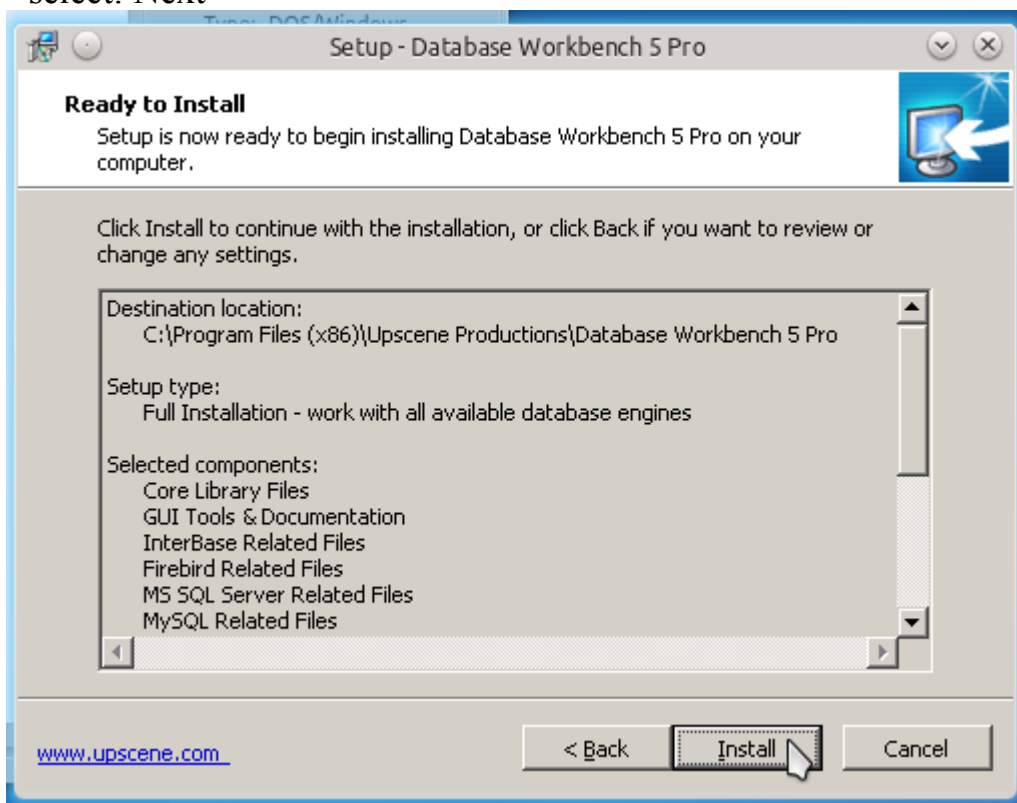


- select: Next

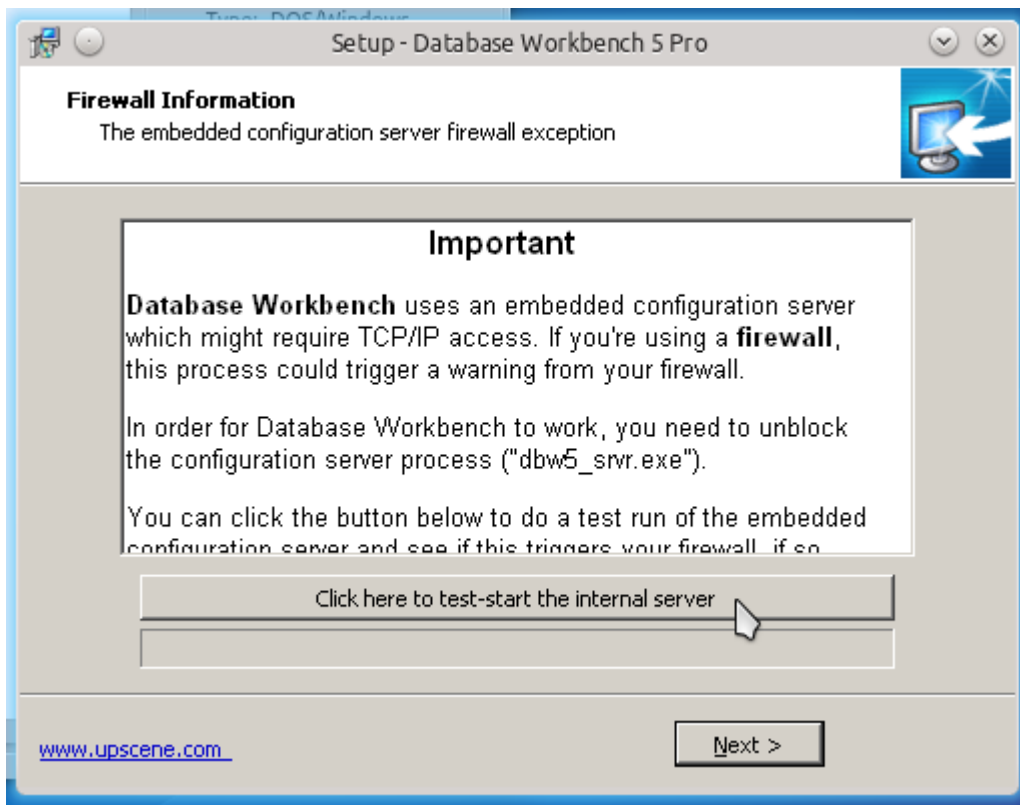




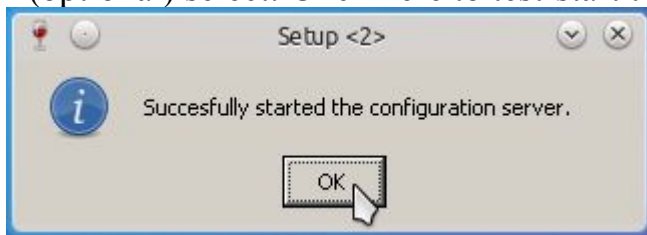
- select: Next



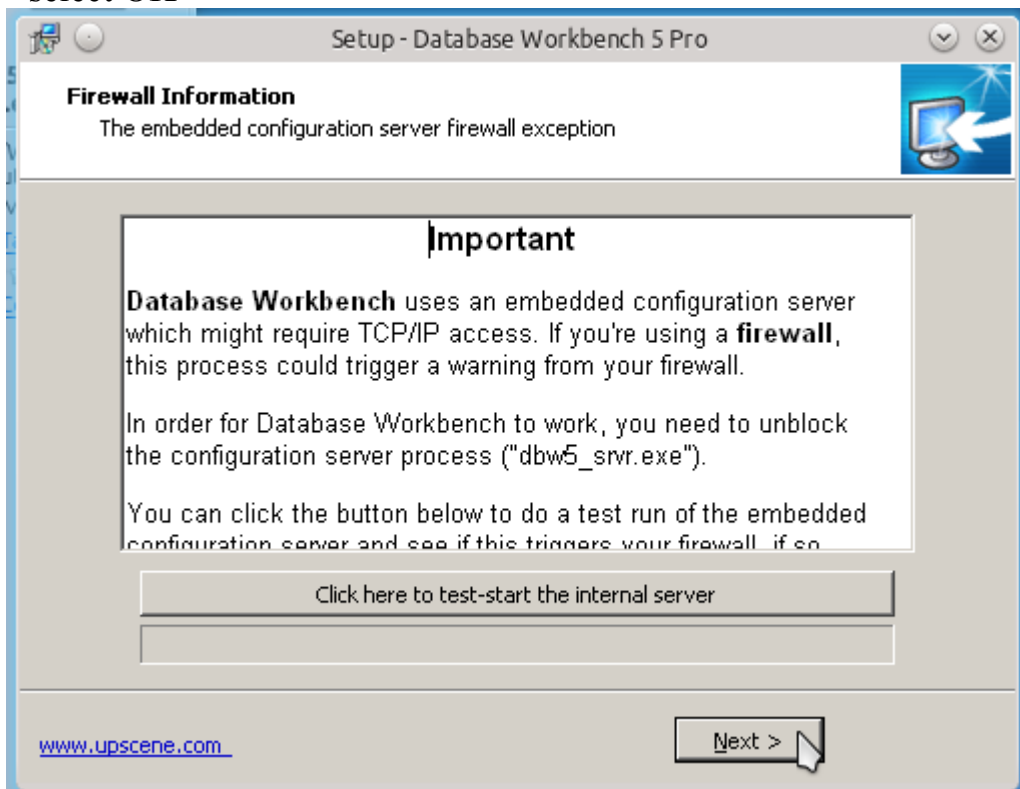
- select: Install



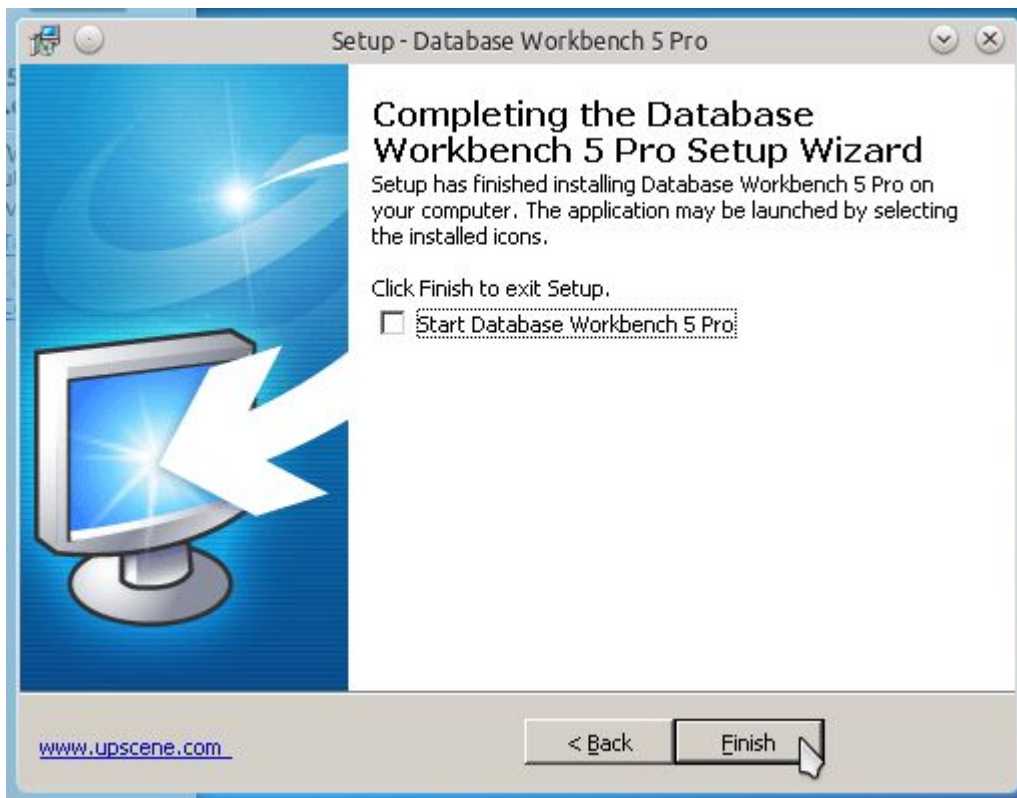
- (optional) select: Click here to test-start the internal server



- select OK



- select Next



- unmark preselection of Start Database Workbench 5 Pro and then: Finish

*Note:*

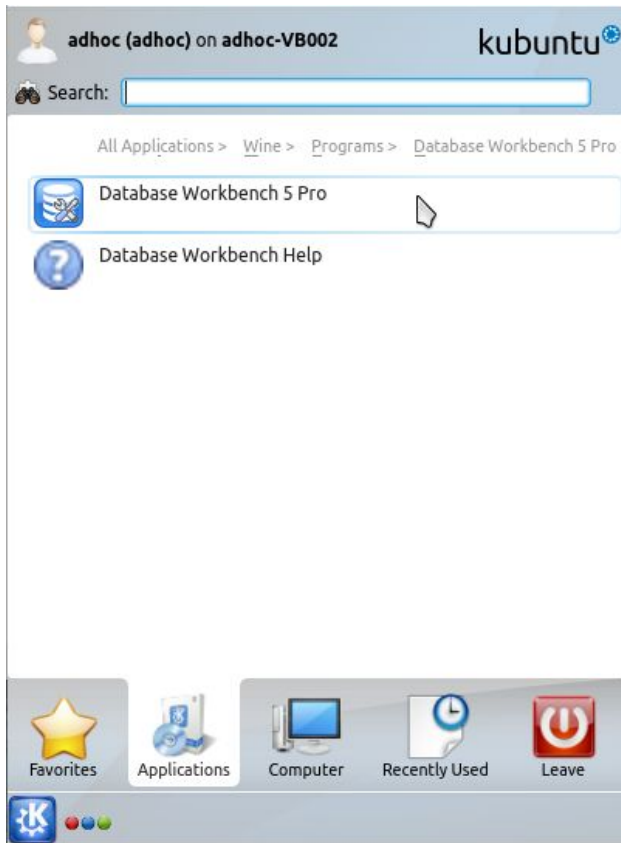
It's recommended to do the first start from the ubuntu desktop and not from a running setup-program in wine

Setup finished and returned to the Kubuntu desktop

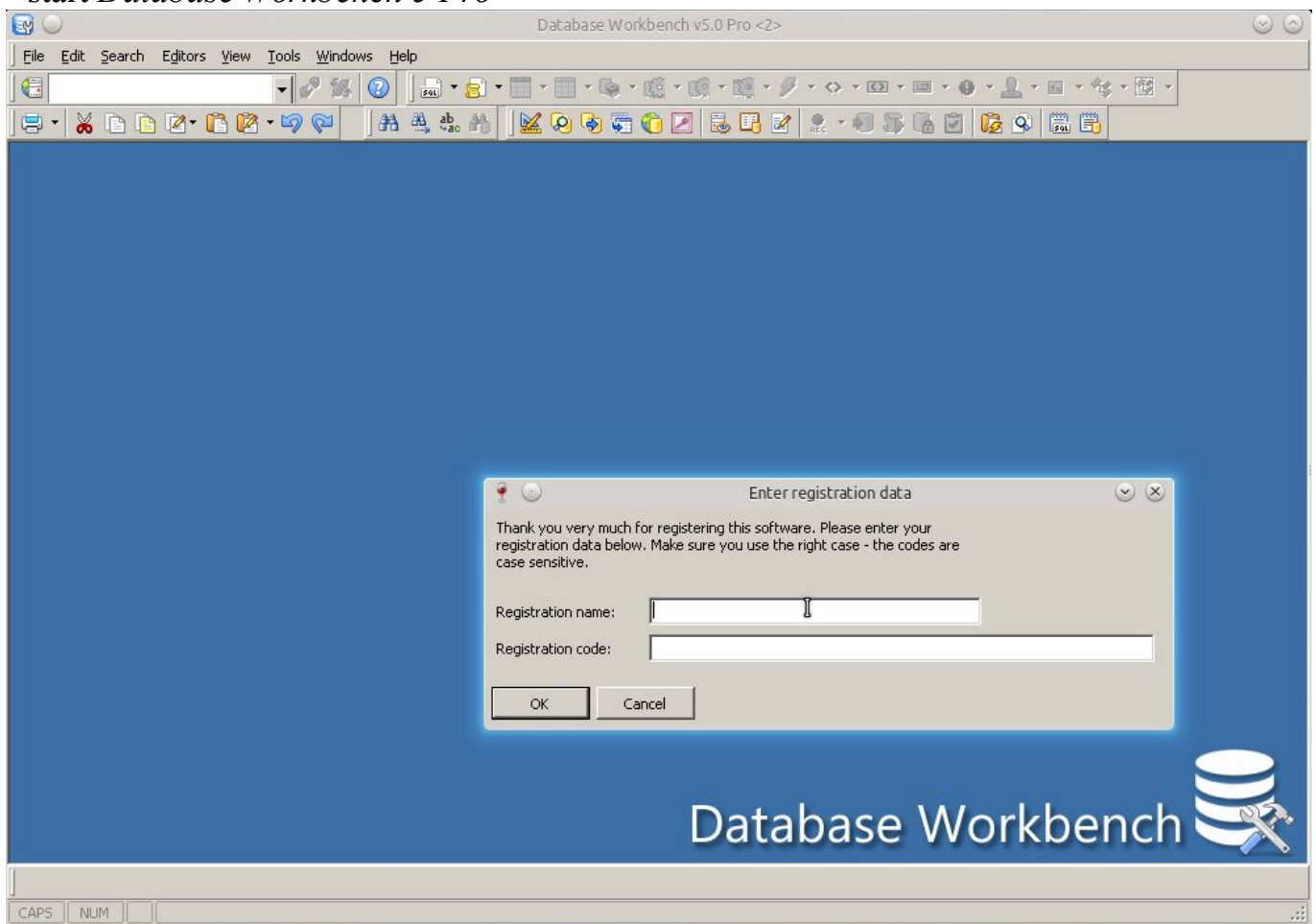


## Database Workbench 5 first start

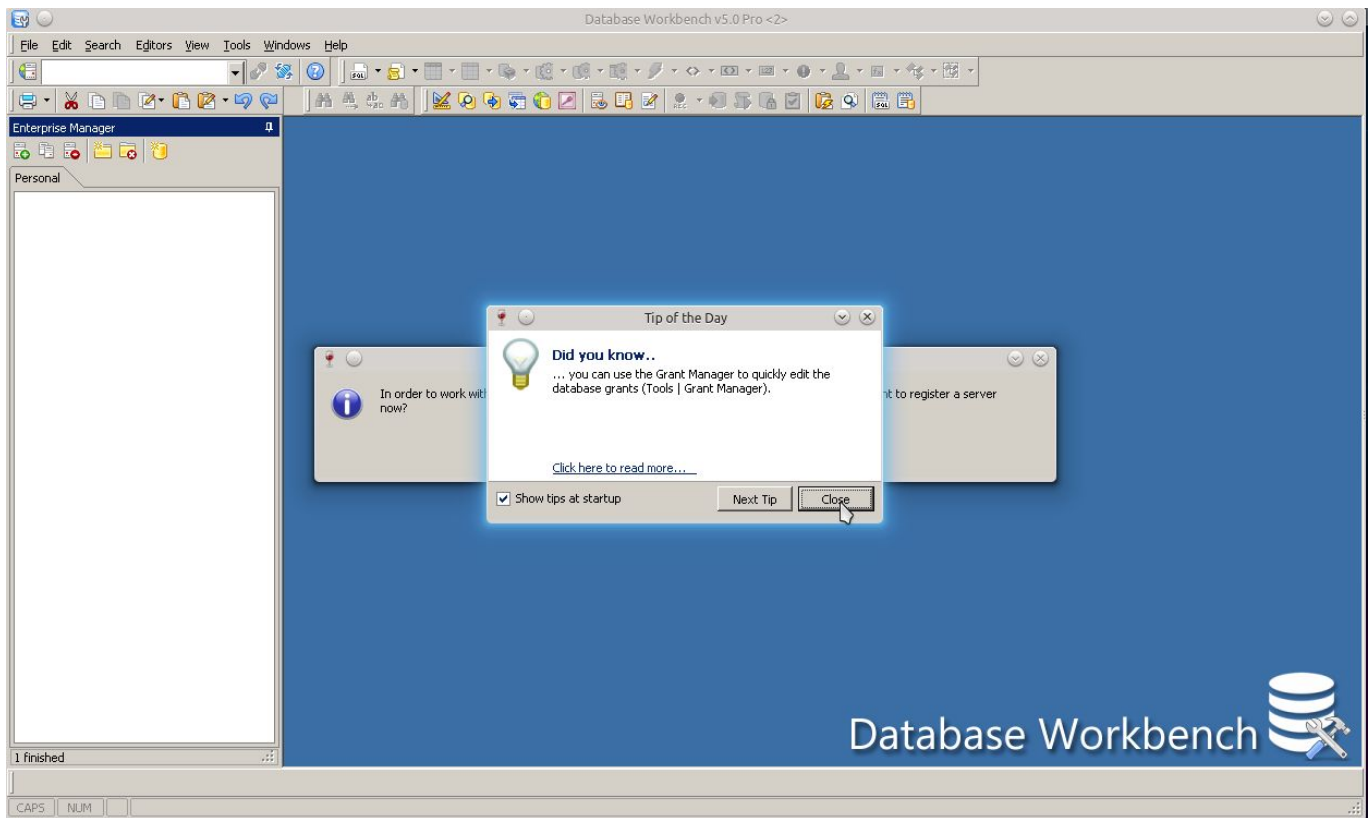
- open Kickoff Application Launcher/Applications/Wine/Programs/Database Workbench 5 Pro/Database Workbench 5 Pro



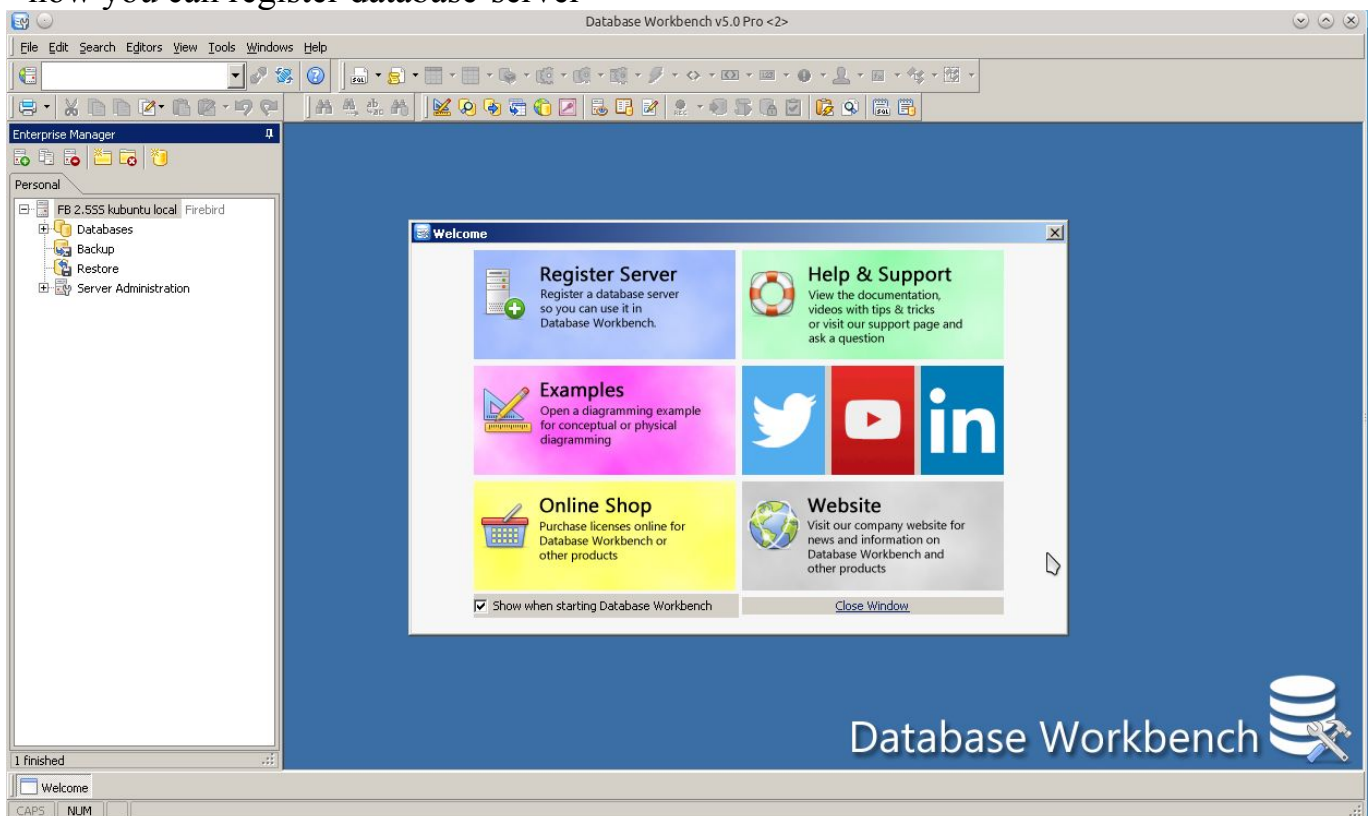
- start *Database Workbench 5 Pro*



- submission of your license - which has been send to you by email



- now you can register database-server



**Now installation finished, Database Workbench 5 is running with wine in Kubuntu!**

