

Installation manual

Database Workbench 5 in Linux Mint 17 LTS MATE Desktop

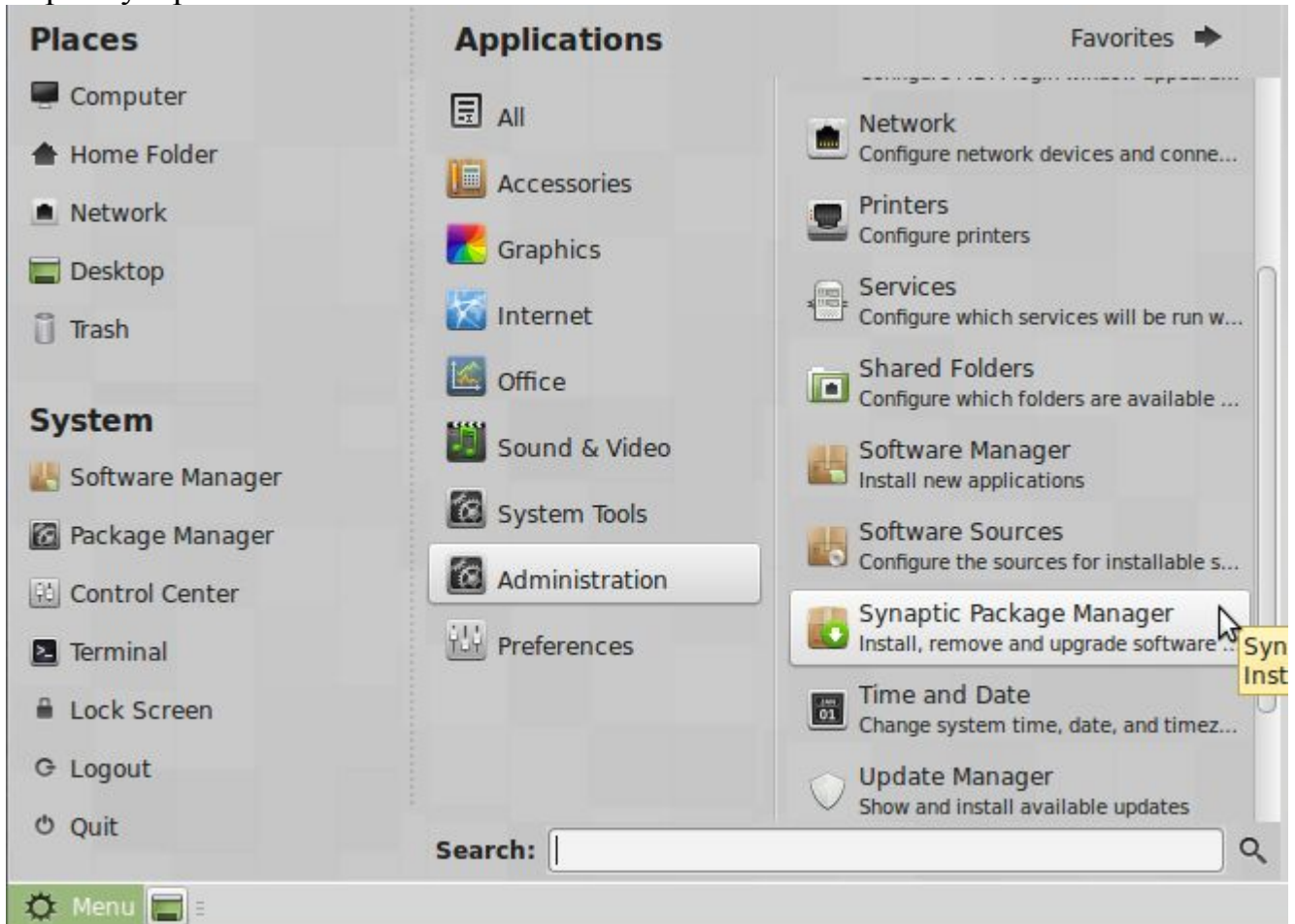
0. Requirements

- on the PC must be installed a version of 32- or 64bit Linux Mint 17 LTS MATE Desktop
- you need Internet access

1. Preliminaries - installation of required software

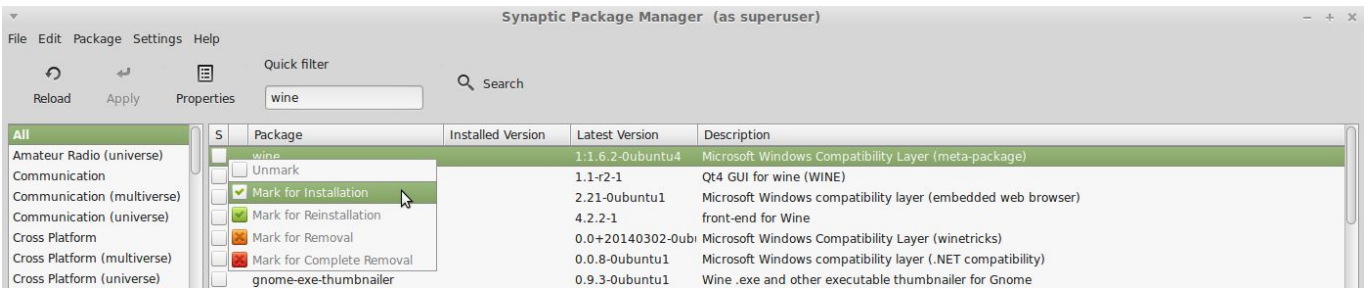
a) Installation of wine

- open synaptic

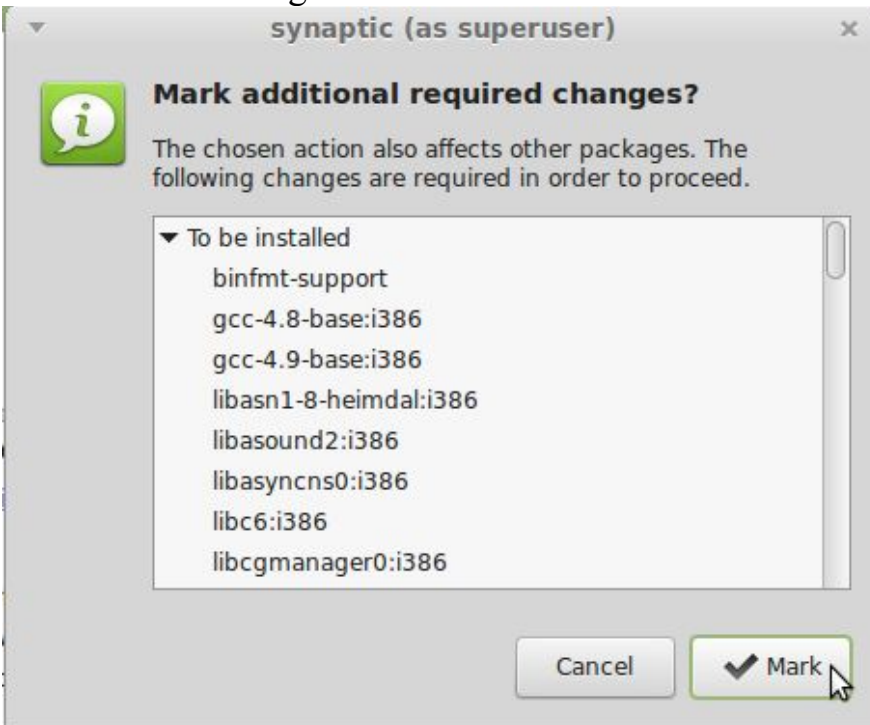


- authenticate

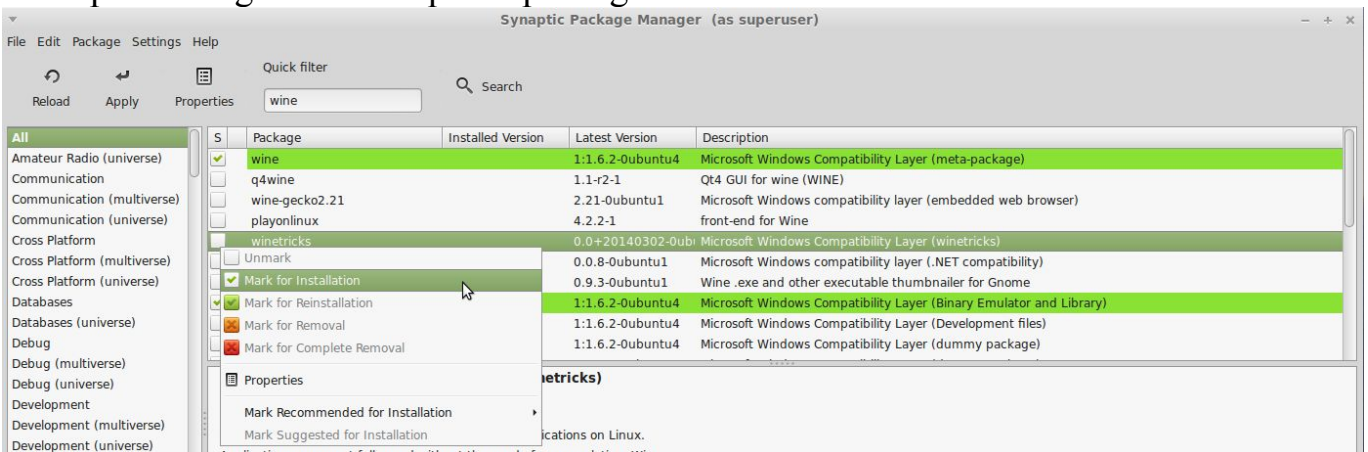
- search for wine



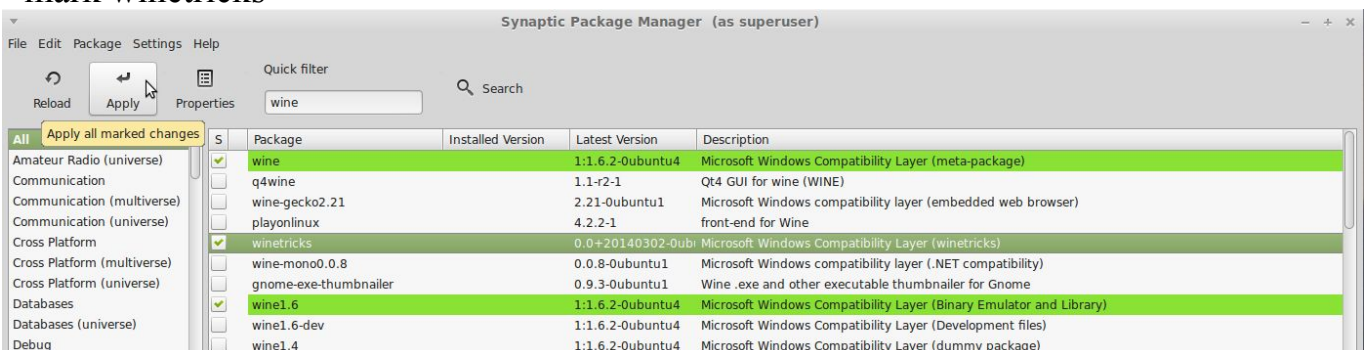
- mark Meta-Package wine



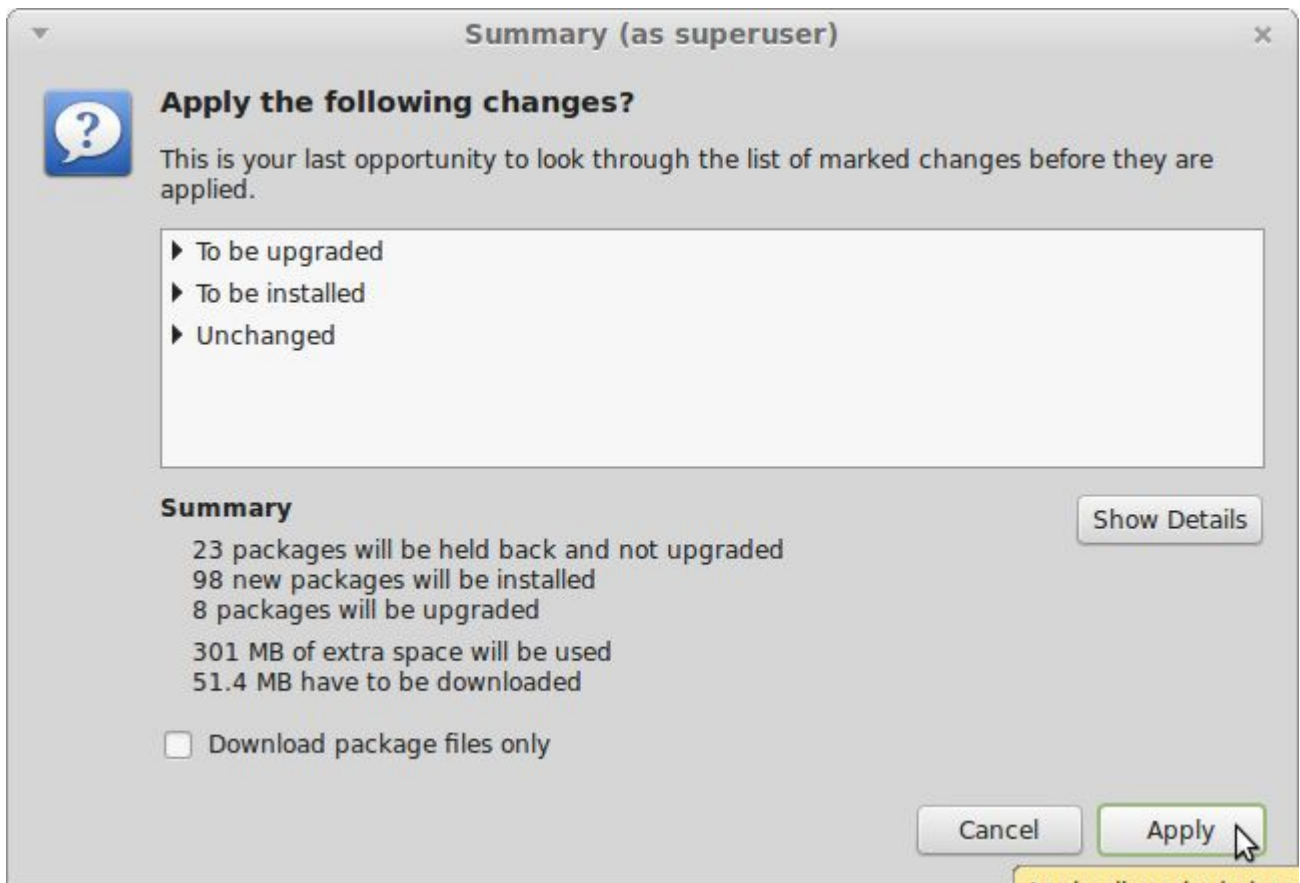
- accept marking of more required packages



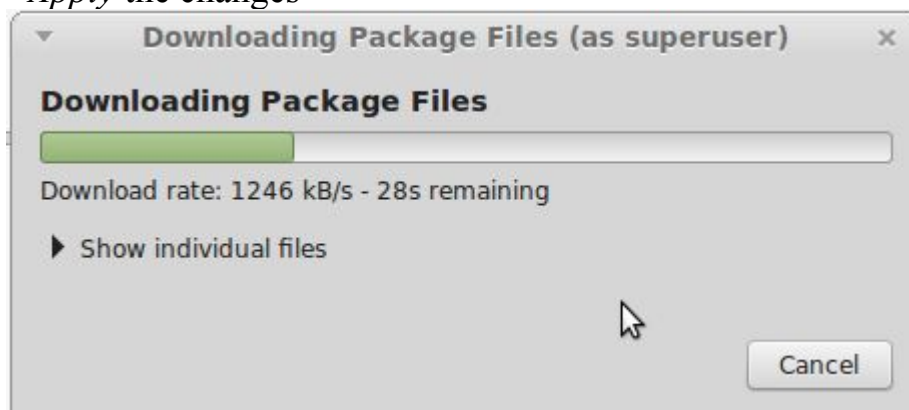
- mark winetricks



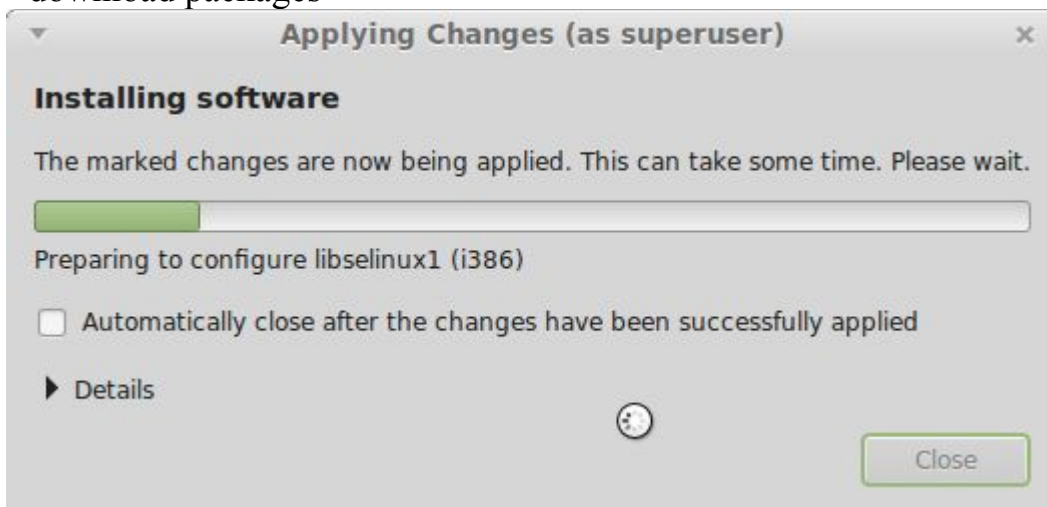
- Apply all marked packages



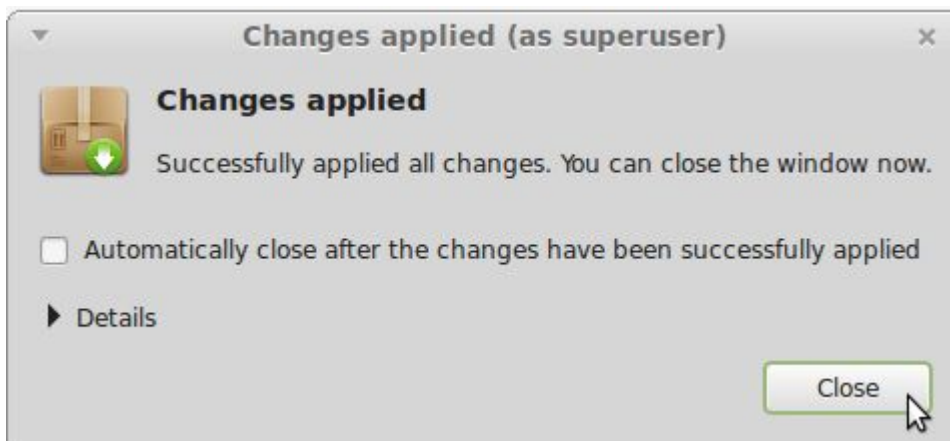
- Apply the changes



- download packages



- install packages

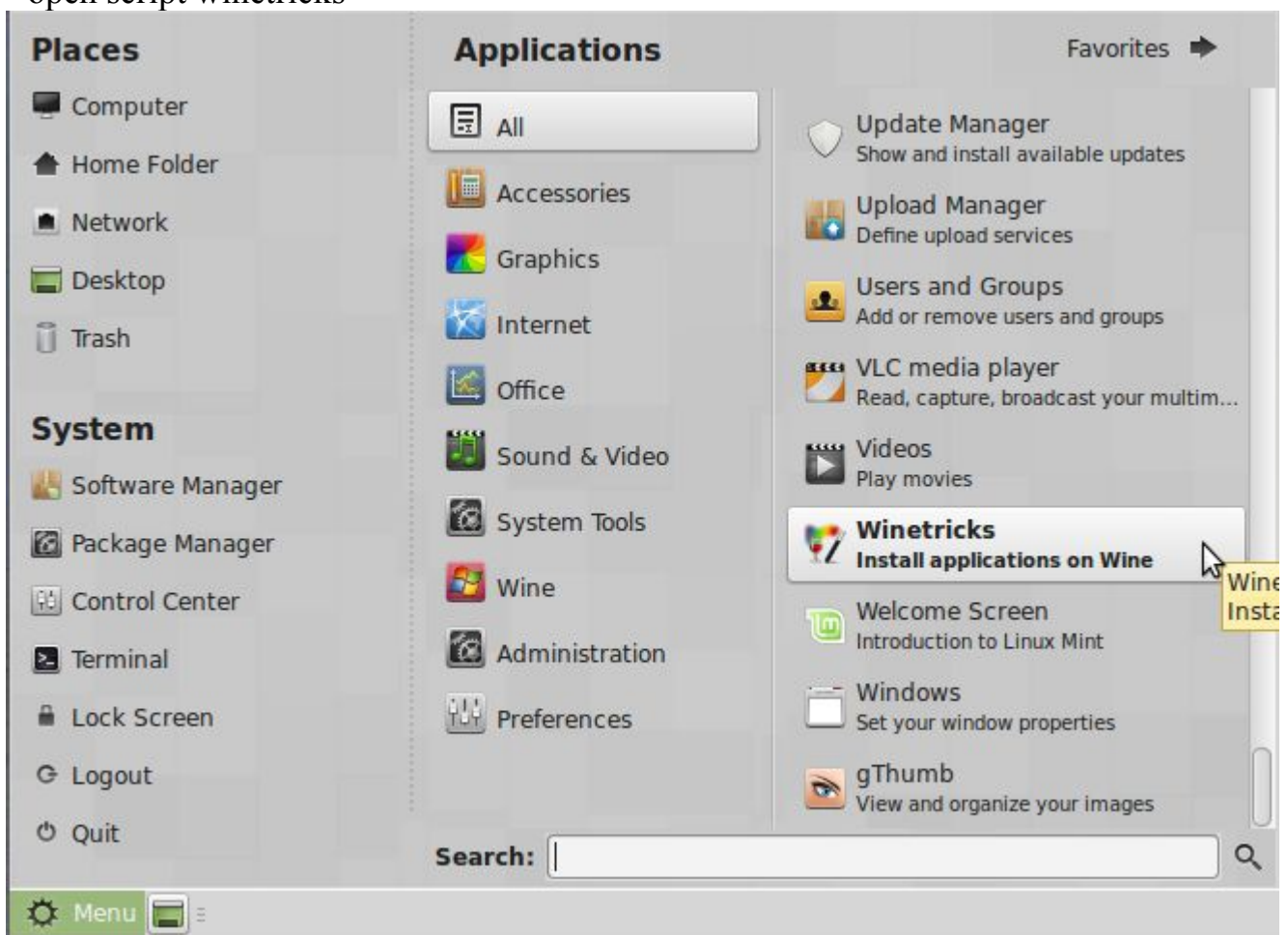


- Close

b) Installation of **gdiplus** (a Windows program-library for graphics and formatted text)

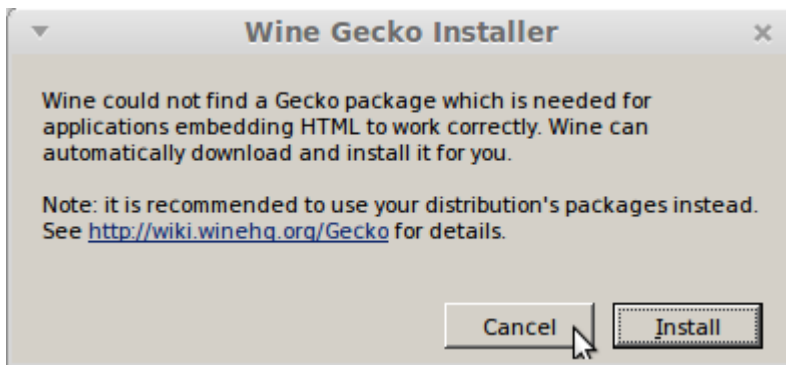
For installation we use the shell-Scripts *winetricks* (was installed together with wine)

- open script winetricks

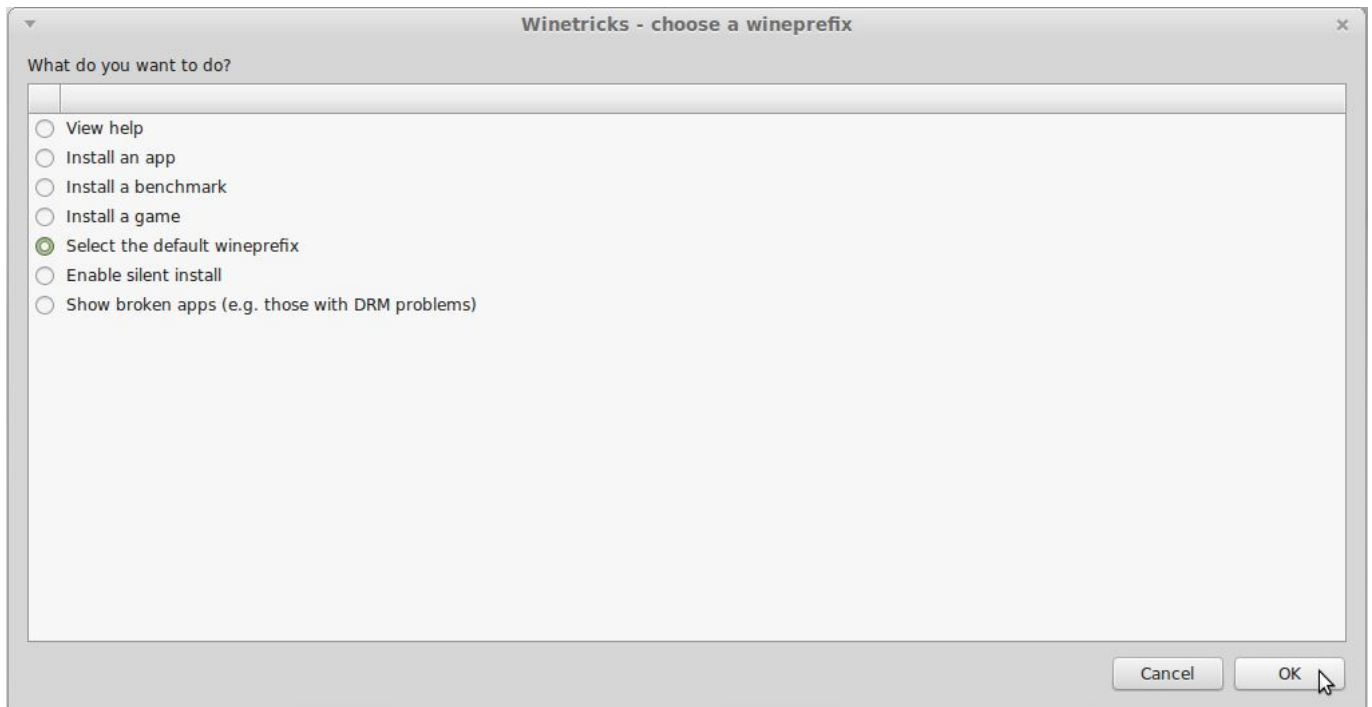


- confirm the warning with *Install*

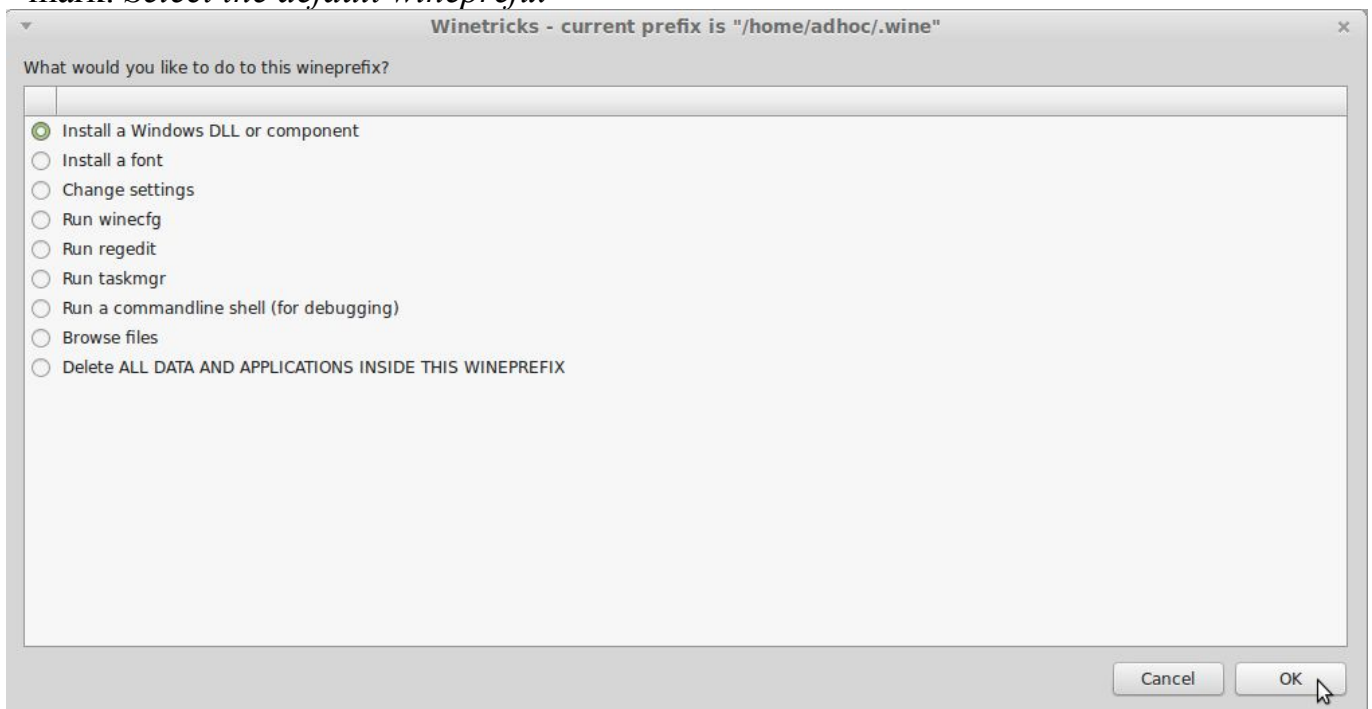




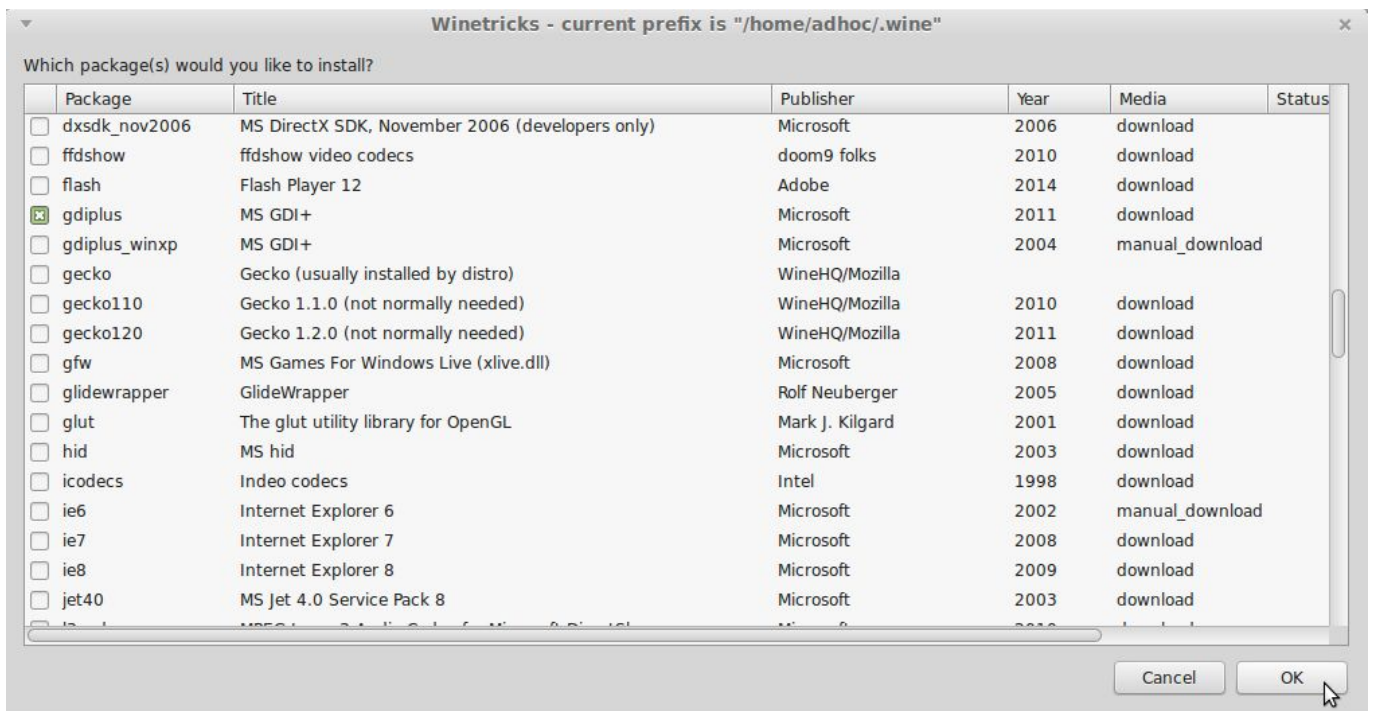
- confirm the warning with *Install*



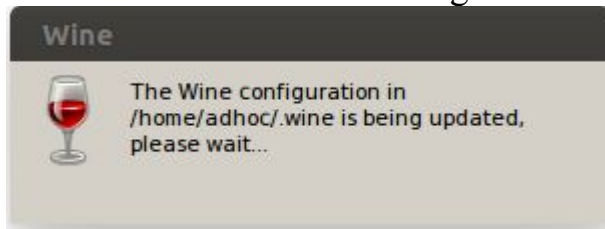
- mark: *Select the default wineprefix*



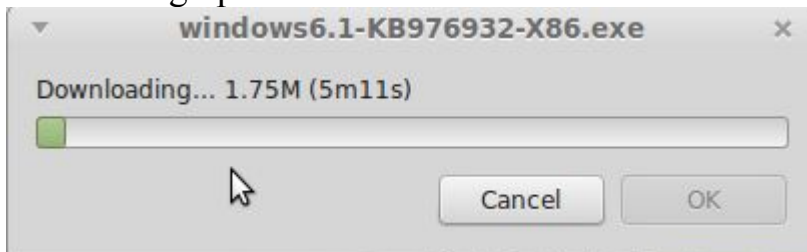
- mark: *Install a Windows DLL or component*



- mark: gdiplus (MS GDI+ Microsoft 2011)
- click OK to create and configure a wine-system (.wine in \$home)



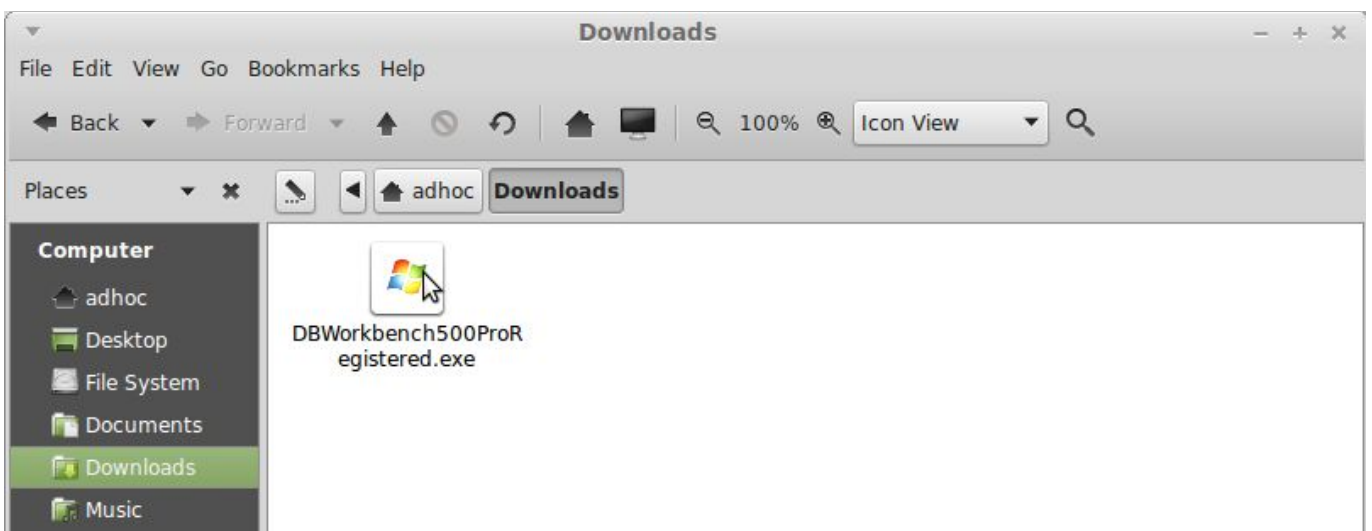
- after this gdiplus is downloaded from Microsoft and installed



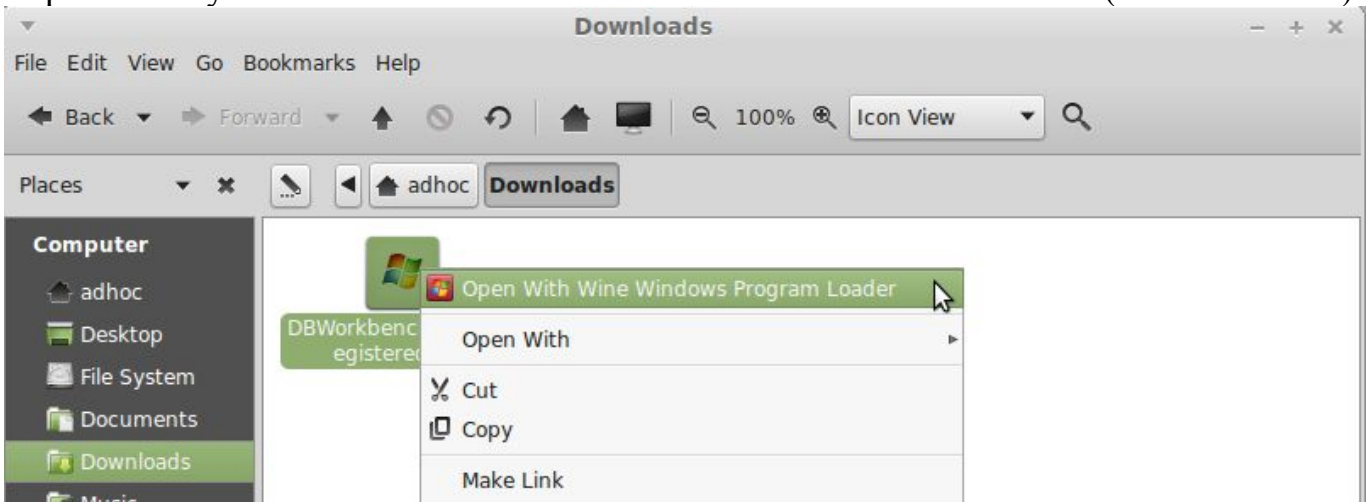
- close **all** winetricks-windows with cancel

2. Installation of Database Workbench 5

- open Home folder



- open folder you have downloaded Database Workbench installation file (i.e. Downloads)

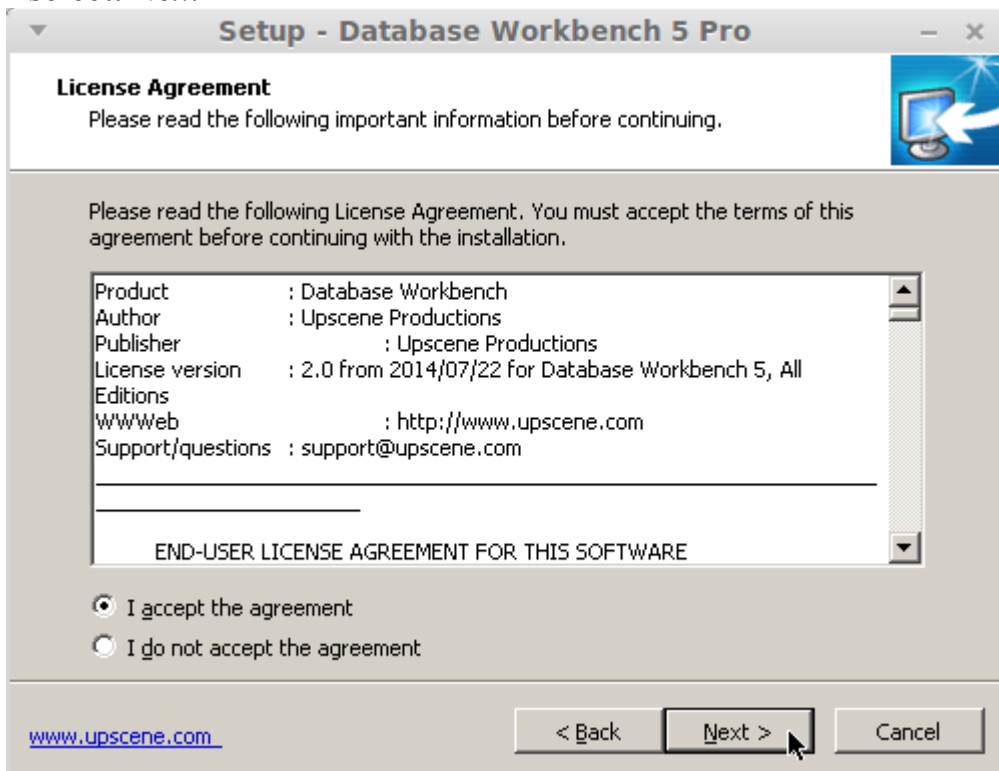


- **right-click** on installation-exe-file

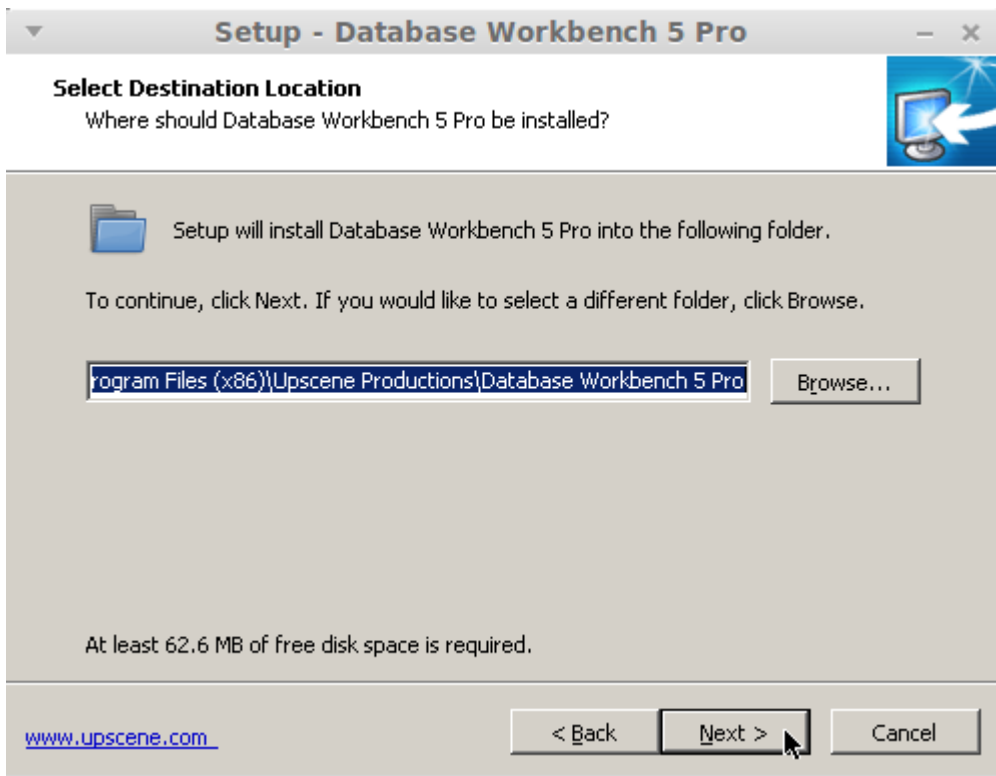
- select: *Open With Wine Windows Program Loader*



- select: *Next*



- mark *I accept the agreement* and select: *Next*



- confirm path of installation (recommended)

Note:

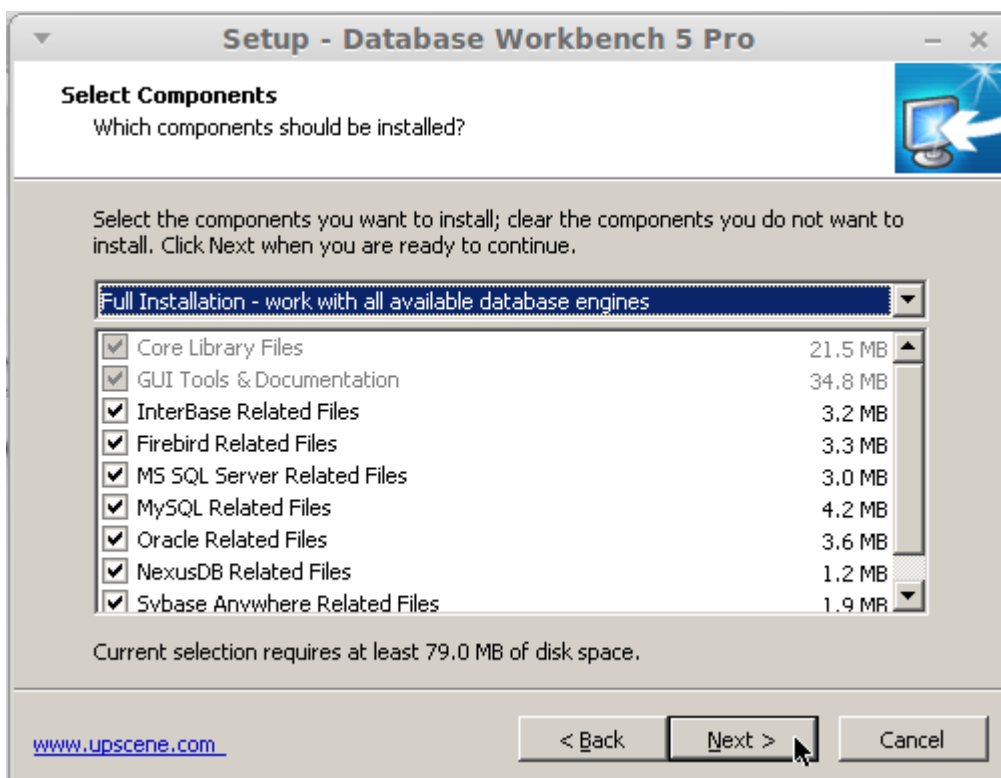
- on a 32bit-Mint version (or an enforced 32Bit wine version) path is:

C:\Program Files\...

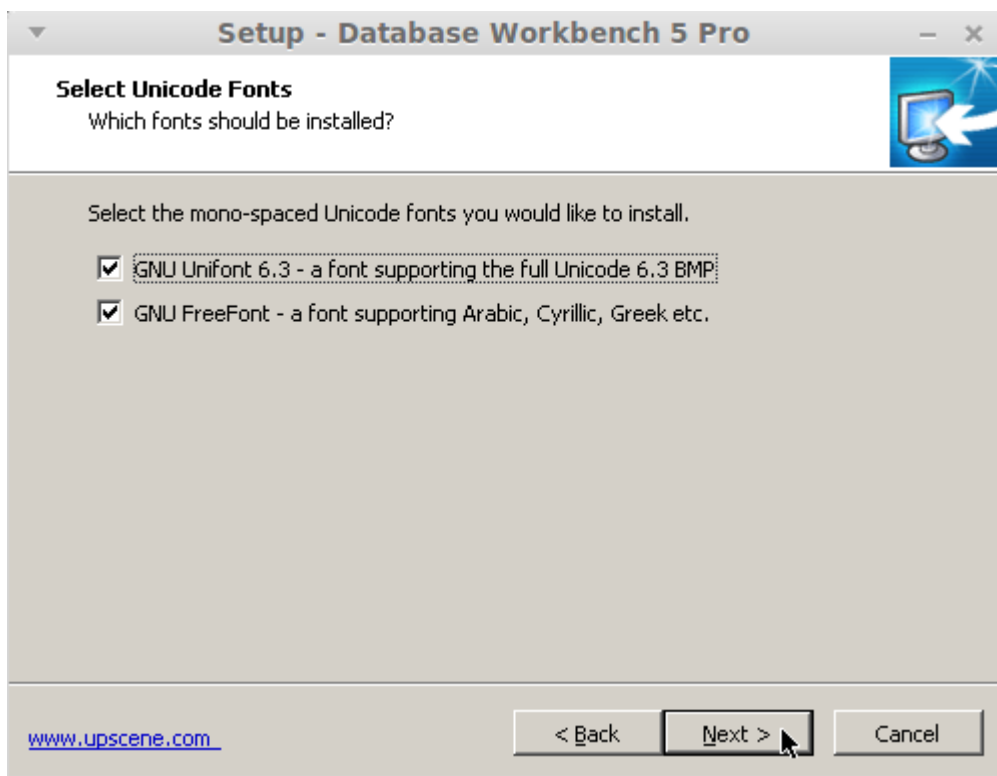
- on a 64bit-Mint version path is:

C:\Program Files (x86)\...

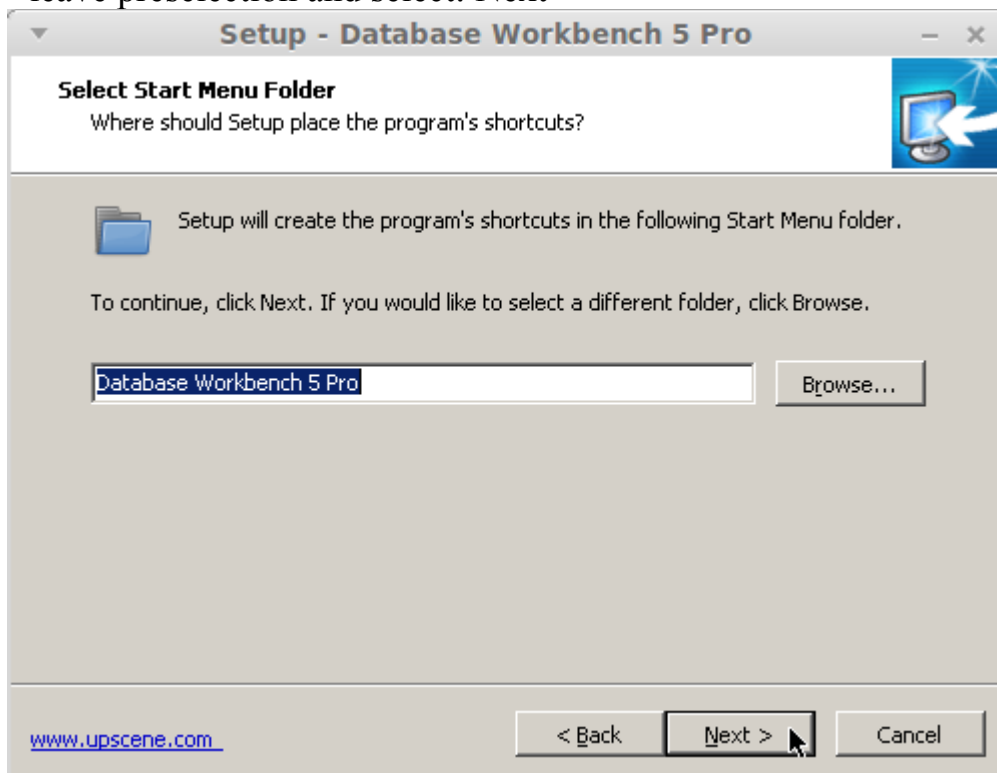
(analog to Windows syntax - because Database Workbench is a 32bit-application)



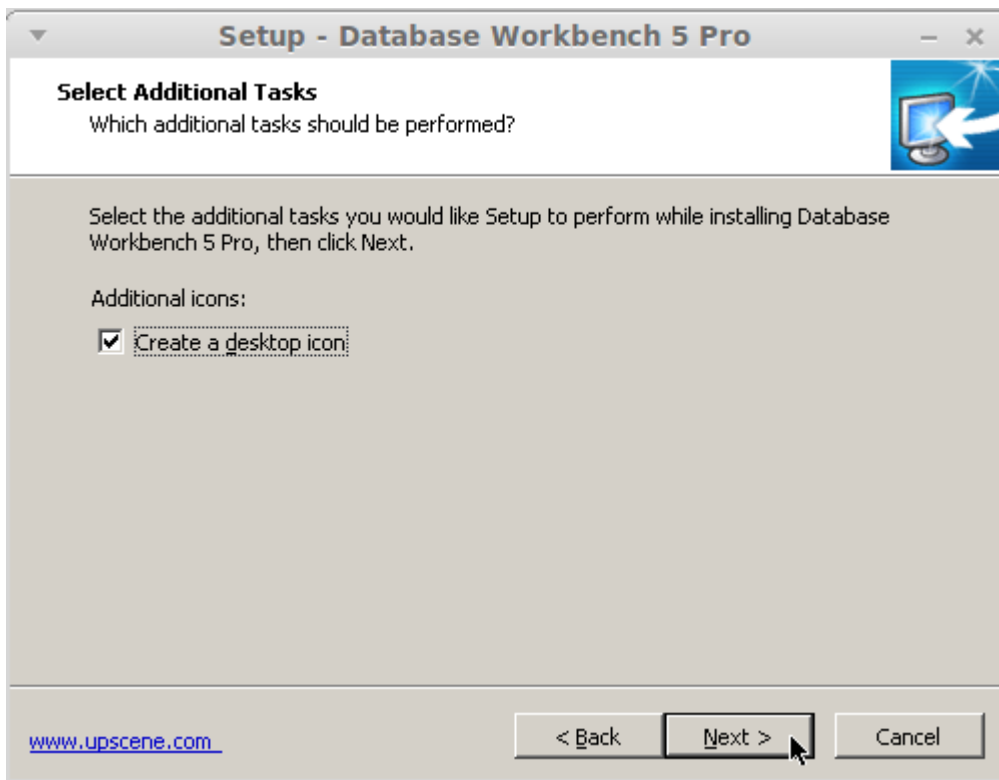
- mark your database-engines which you like to have and then: *Next*



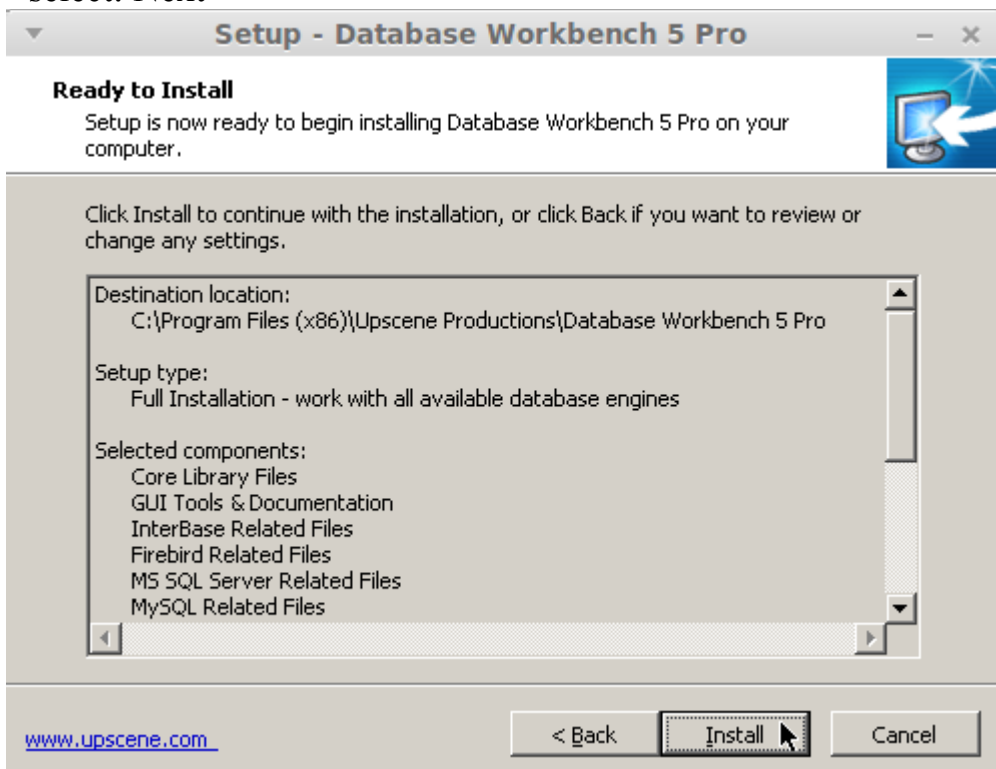
- leave preselection and select: Next



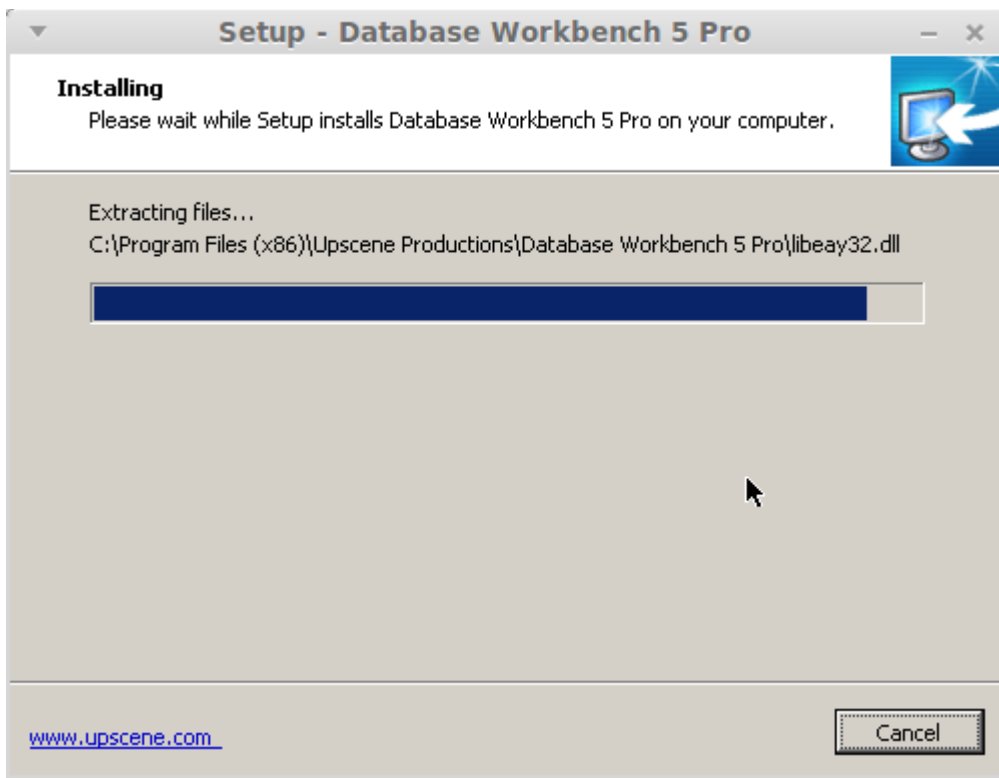
- select: Next



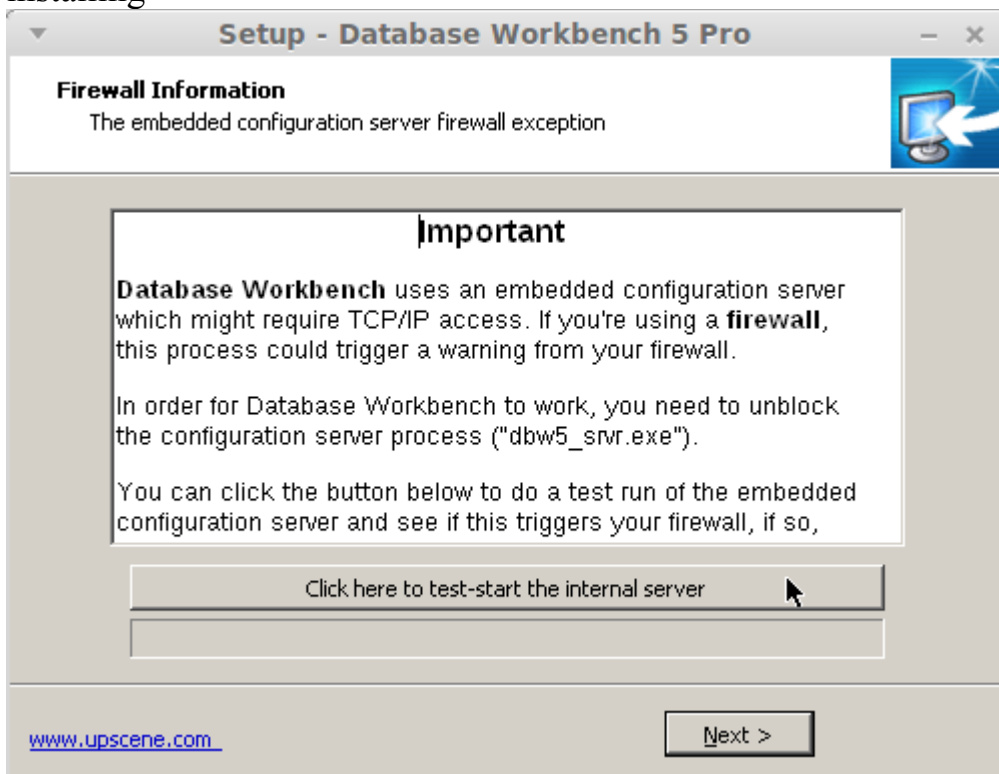
- select: Next



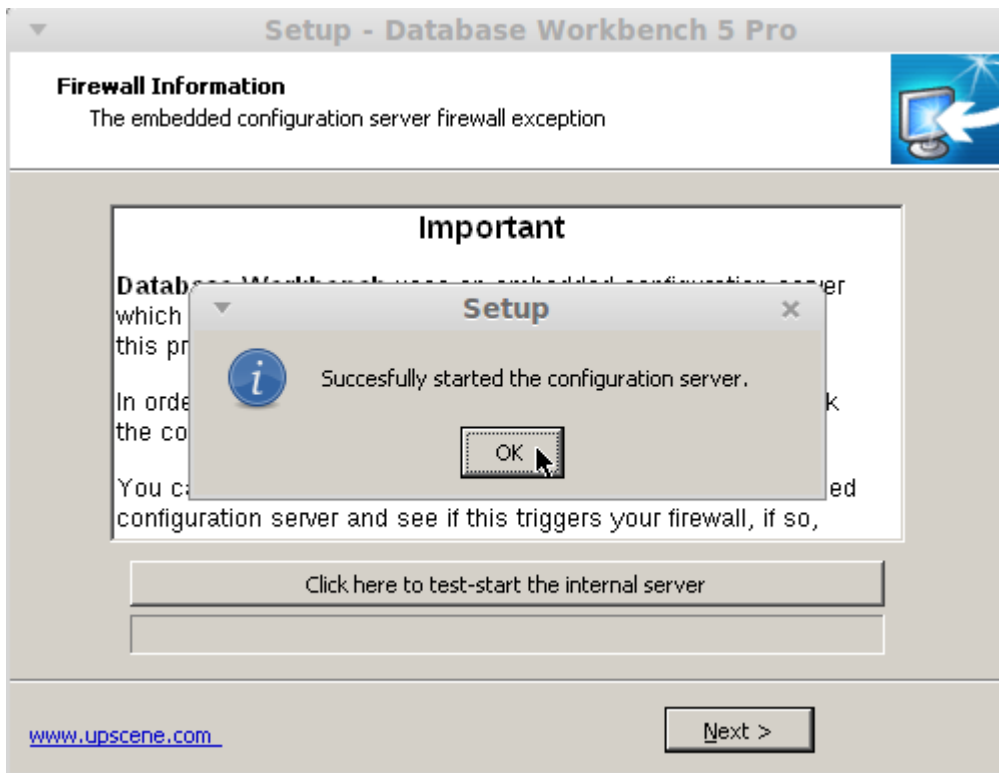
- select: Install



installing



- (optional) select: Click here to test-start the internal server



- quit Setup window with *OK* and then select *Next*



- unmark preselection of Start Database Workbench 5 Pro and then: *Finish*

Note:

It's recommended to do the first start from the ubuntu desktop and not from a running setup-program in wine

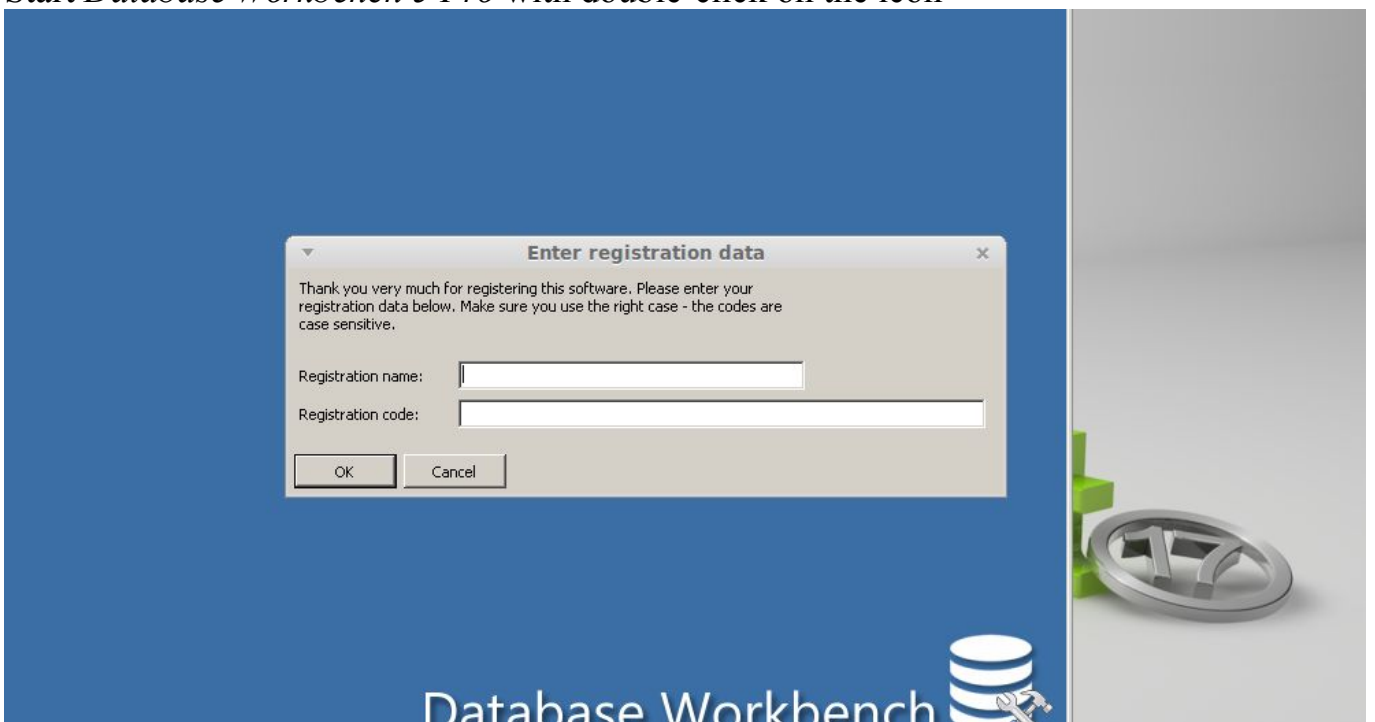
the setup is finished and returned to the MATE desktop

Now there are 2 links on the ubuntu desktop

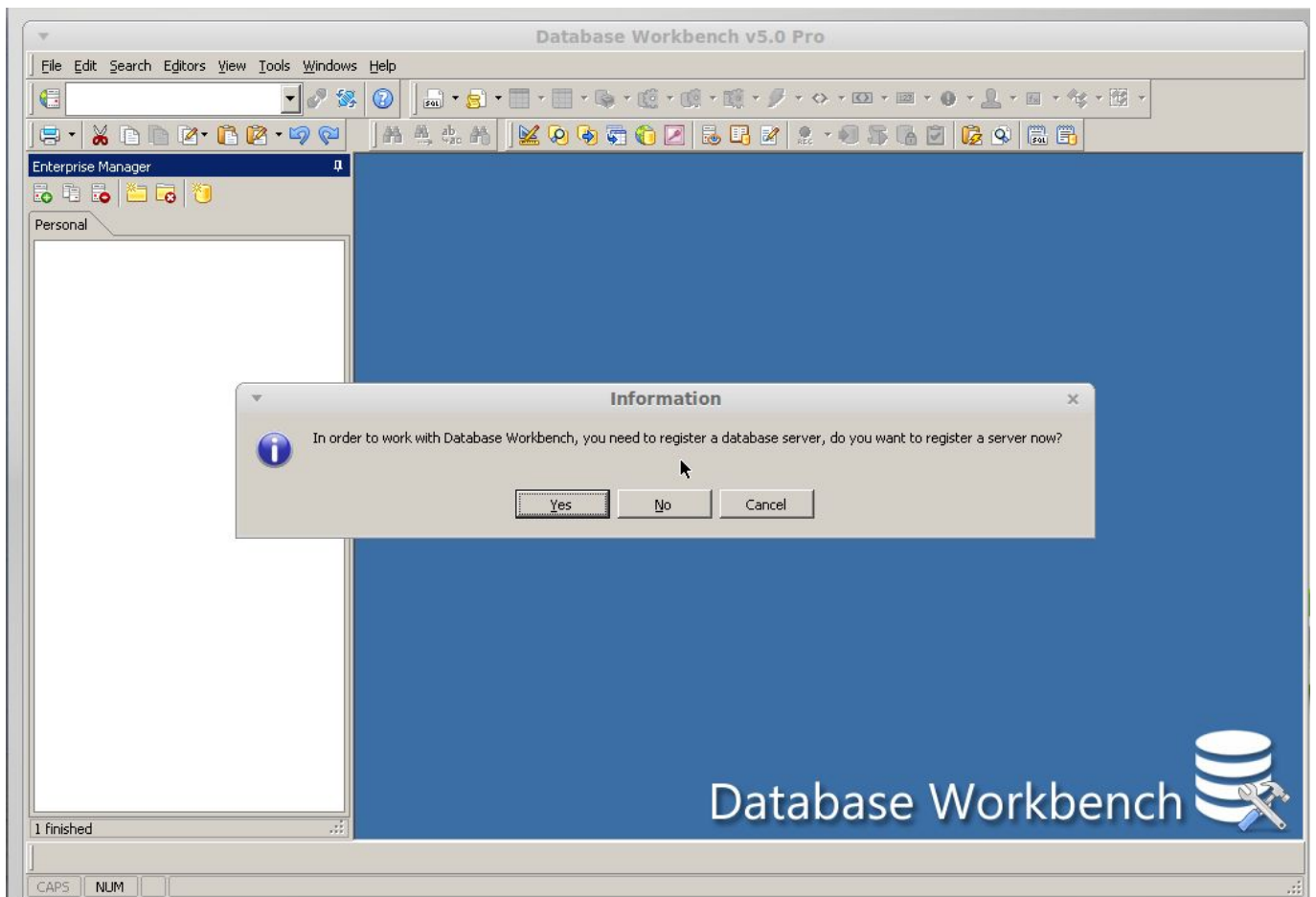


- delete the link *Database Workbench 5 Pro.lnk*

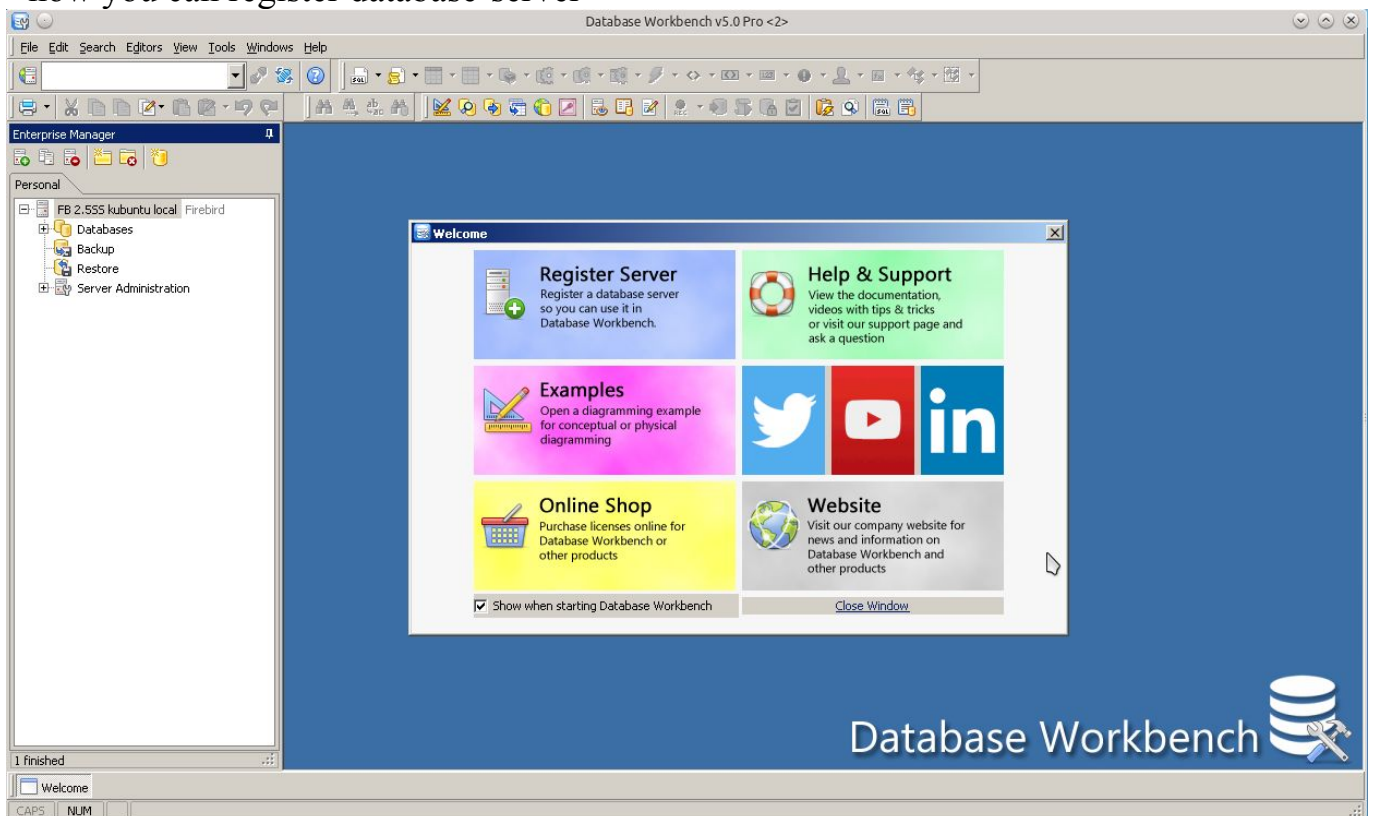
Start *Database Workbench 5 Pro* with double-click on the icon



- submission of your license - which has been send to you by email



- now you can register database-server



Database Workbench 5 running with wine in Linux Mint!

