

# Database Workbench™

A single development environment for your database engines

**This tool is amazing, compared to whatever tool that comes with any SQL engine, this one is, by far, the simplest and most feature rich one I've seen.**

*Gustavo Carreno  
Web Programmer  
Fábrica Digital*

## We understand the need

As fellow database developers, we understand the problems you're facing when developing your database applications. We know the tasks of comparing databases, the need of having test data available, being able to browse your database objects and to make printouts of your database structure. We understand where the vendor tools fail.

## One environment avoids confusion

For those developers that develop products for multiple database engines, using multiple vendor specific tools can be confusing. With Database Workbench you have a single consistent Integrated Development Environment that uses the same layout of tools for each database engine it supports. A single IDE also avoids the need to remember tool-specific menu paths, shortcuts, hotkeys and more.

**This is a fantastic database management and development IDE that is very easy to use, and I recommend it to every SQL developer.**

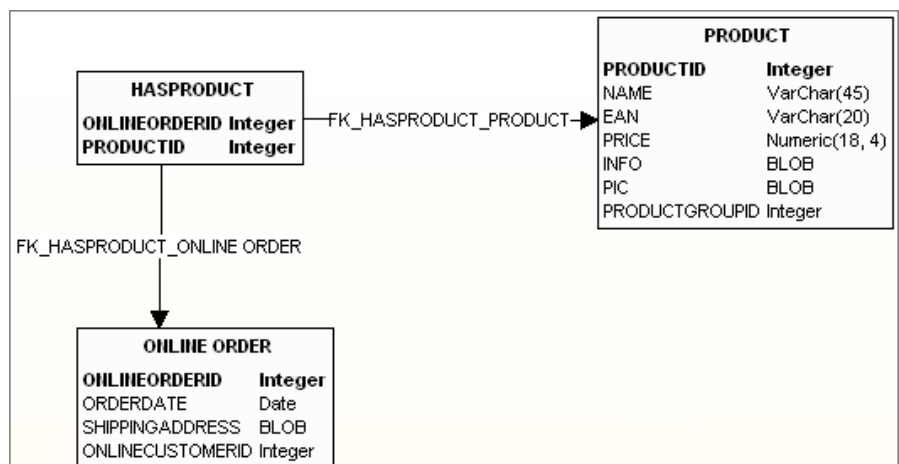
*Ole Willy Tuv  
NexusDB User and SQL guru*

## Database schema browsing and searching

With Database Workbench you can browse all objects in a consistent and thorough way. Because you're using the same IDE for all your database development, browsing becomes intuitive and easy. Database Workbench offers you to search for objects and search in object source code like Stored Procedures.

## Conceptual and Physical Data Model Diagramming

With the Diagramming Tools, it has become even easier to design your database or reverse engineer existing database to create a printable copy of your database structure.



**The GUI is one of the most intuitive yet powerful interfaces I have come across so far.**

*Albert Chau  
Figment Technologies Inc.*



# Database Workbench™

A single development environment for your database engines

## Visual tools

With the visual tools for editing schema objects, you don't have to enter long SQL statements, a boring and error prone task. You don't have to remember database engine specific SQL differences – let the tools do the job for you.

**No need to remember vendor specific SQL syntax**

## Easy migration and management

With our Schema Migration and Schema Compare tools you can easily migrate legacy structures to your new database engine. You can even migrate ODBC or ADO data sources to your new databases! This can give you a head-start when converting an old product. By using the Schema Compare, you can easily create a change-script from your newer database to run against older databases.

**Schema migration and schema compare tools**

## Testing and profiling

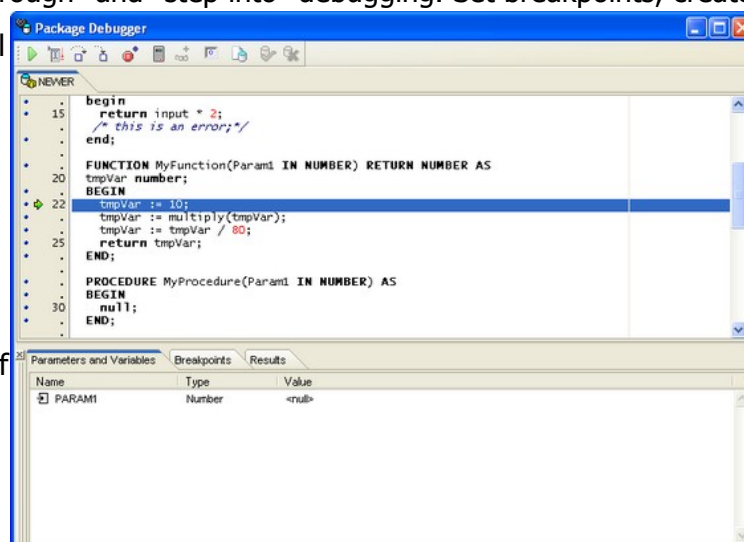
Database Workbench includes a Test-Data Generator tool, allowing you to “fill” your database with data to profile your applications against a filled database. Via the SQL Editor, you can test your ad-hoc SQL statements and view the query plan (if available) in a graphical way. An ideal way of fine-tuning your queries before your application hits the streets.

**Complete test-data generator**

## Stored Code Debugging

InterBase, Firebird and Oracle Stored Code can be debugged by using line for line execution via “step through” and “step into” debugging. Set breakpoints, create “watches”, check local

variable values and follow the logic of your stored procedures. The debugger includes “tool tip” evaluation of variable values, making it easy to see what's going on.



**Stored Procedure, Function, Package and Trigger debugger**



# Database Workbench™

A single development environment for your database engines

## Perform maintenance and DBA tasks

### Perform DBA tasks from a GUI environment

Besides the usual database development tasks, you can also perform several maintenance and Database Administrator tasks with Database Workbench. For example:

- backup/restore
- create/alter/drop user
- view statistics
- monitor server processes
- database validation and repair
- view server logs

## Data import, export and data transfer

### Data from any ODBC or ADO data source

Database Workbench supports import from and export to CSV files. It also exports data to SQL script, Microsoft Excel, XML and other file types.

The DataPump tool can be used to transfer data from and to ODBC and ADO data sources to and from databases you're using with Database Workbench. You can adjust the mapping to convert legacy data to your new format. Filtering and other options are provided. You can even use a custom SQL statement as the "data source"!

### Comprehensive BLOB Editor

## And there's more!

There are many more tools to increase your productivity and make your job easier. Other tools include:

- BLOB Editor with Text, Image, Hex and HTML/XML viewer
- Multi-level clipboard & Special Copy/Paste functionality
- SQL Insight
- Describe Companion
- Visual Query Builder
- DDL/DML statement recorder
- Auto-SUID Procedure creation
- Object Templates



# Database Workbench™

A single development environment for your database engines

## Modularization

Database Workbench is modularized – you can select the modules you need for your development.

**License price dependent  
on needed modules**

## Supported platforms

### Client

- Pentium/AMD PC or similar
- Windows 2000, XP, 2003, Vista
- 45 MB disk space, depending on selected modules during install
- 32 – 64 MB or RAM free
- 1024x768 SVGA or higher
- Connectivity for databases engines used

### Database engines

Database engines can be running on any platform accessible via the database engine client connectivity software.

- Microsoft SQL Server 6.5 – 2008, including MSDE/SQL Express
- Oracle Database 8 – 11, including XE
- Sybase SQL Anywhere 9 – 11
- Borland InterBase 4 – 8
- Firebird 1 – 2.1
- MySQL 4 – 5.1
- NexusDB v2.07 and up

For more information about Database Workbench or other Upscene Productions products, see [www.upszene.com](http://www.upszene.com)

© 2005-2008 by Upscene Productions. Database Workbench is a trademark of Upscene Productions.  
Other brand or product names are trademarks or registered trademarks of their respective owners.



**Upscene Productions**  
Industrielaan 37  
5342 EV Oss  
The Netherlands  
[www.upszene.com](http://www.upszene.com)